

MAASAI WILDERNESS CONSERVATION TRUST

IMPACT REPORT
OCT - DEC 2022



Q4

FOUNDER'S MESSAGE

Dear MWCT supporter,

The year closes with another very challenging quarter.

*The so desperately needed rains did not arrive.
The land, the trees, the wildlife, the livestock, are all suffering.*

*And with the drought come challenges of livestock dying of starvation,
and yet tried to be claimed as predated.*

Wildlife Pays has supported the community, but it had serious challenges.

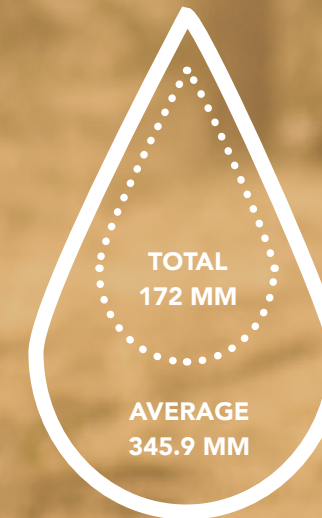
And so did our conservancies, which have been trespassed far too often.

*The solution lays in a better engagement of the community, for less pot poaching,
for addressing overstocking and overgrazing.*

*And on the positive side, the Chyulu Hills REDD+ Carbon Project, whose Project Office is run by MWCT, has succeeded in
getting accredited with 3,100,000 new credits.*

*We look forward in the new year to engage and support the communities in better protecting and valuing their Natural
Assets.*

*Thank you for your support,
Luca Belpietro*



RAINFALL

CONSERVATION

Wildlife Security & Habitat Protection
Ranger Patrol
Incidents & Conflicts

Wildlife Monitoring
Species Sighting
Simba Scouts
Camera Trap Results

Predator Protection
Wildlife Pays

Land Restoration
Bee-Keeping
REDD+ Carbon Project

LIVELIHOODS

JustDiggIt
Restoration Projects

HEALTH

Outreaches
Family Planning

EDUCATION

Achievements
Challenges

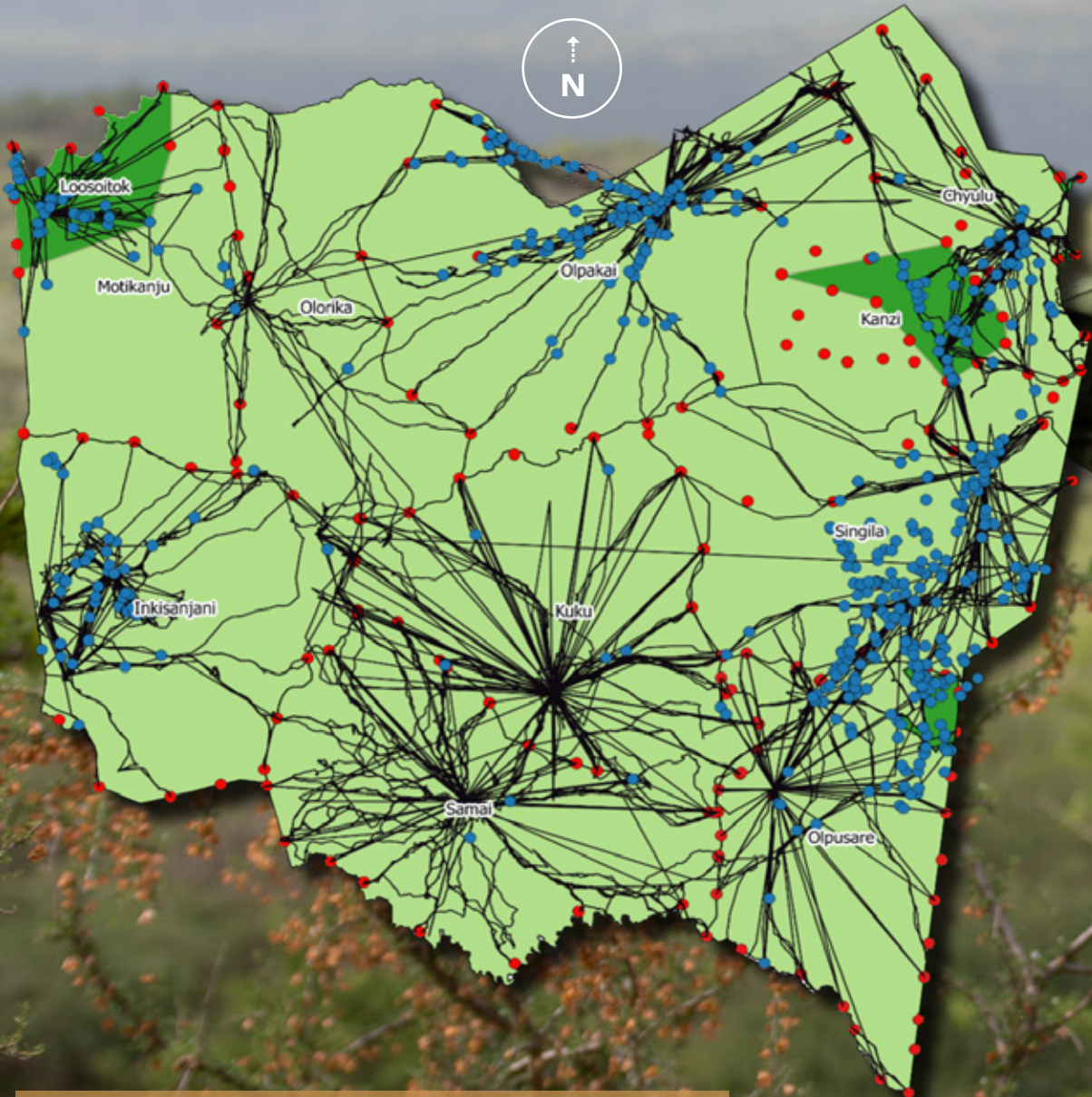
PARTNERS & SUPPORT



WILDLIFE & HABITAT PROTECTION

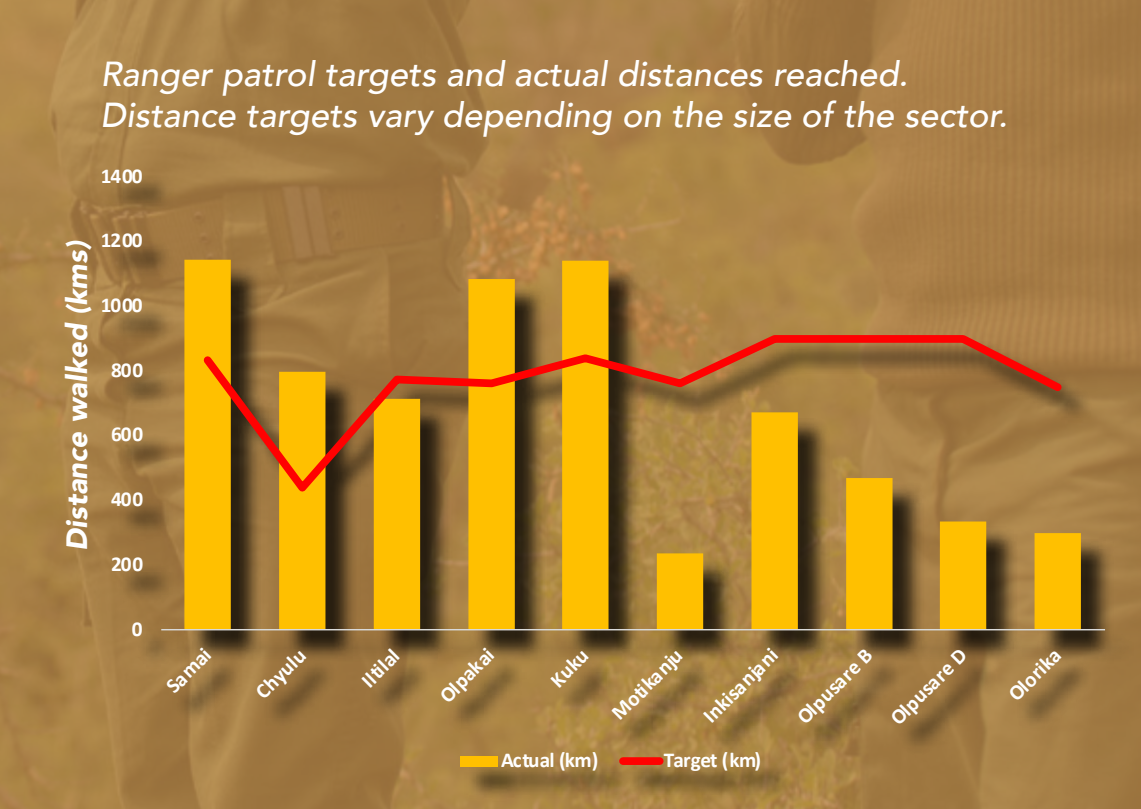
Samai sector covered the greatest distance (1,143 km). The team faced some technological challenges with SMART (connect), which had contributed to some data delays and lower statistics.

SECTOR	ACTUAL DISTANCE (Kilometers)	TARGET DISTANCE (Kilometers)
Samai	1,143	834
Chyulu	799	438
Ittilal	714	774
Olpakaai	1,086	762
Kuku	1,142	840
Motikanju	236	762
Inkisanjani	671	900
Olpusare B	470	900
Olpusare D	335	900
Olorika	299	750
Total	6,895	7,860



Map:
2022 OCT - DEC Ranger Security Patrols / Wildlife Sightings

- WILDLIFE SIGHTINGS
- PATROL POINTS
- RANGER PATROLS
- KUKU GROUP RANCH SECTORS
- CONSERVANCY



179
RANGERS

SMART & Cybertracker
Data Collection Trained

14
Sectors

6 to 8
Rangers per sectors

123
Dedicated Rangers for daily
Kuku Group Ranch patrols

6,895
Total kilometers on foot
↑23%
vs. Q4 2021



INCIDENTS & CONFLICTS

OCT

OCT 4 - ELEPHANT CALF RESCUE

Reported by: Rangers
Report received by: Radio Operator
Area covered: Areas around Olpusare Conservancy

Summary: MWCT rangers reported that an elephant calf was stuck in a mud pit inside Olpusare conservancy. Our Ranger Operation Commander, Conservation Manager and Simba Scout Coordinator, reported to the scene. They were successful in rescuing the elephant calf. KWS and Sheldrick Vet team arrived on site, and later airlifted the calf for further treatment at their facilities.

OCT 6 / 10 / 24 - ELEPHANT CALF MORTALITIES

Reported by: Rangers
Report received by: Radio Operator
Area covered: Areas around Langata

Summary: There were three reports of elephant calf deaths this month. The first was reported by our rangers, while the second and third were reported by community members. After careful observation, it was deduced that all the calves had died of natural causes related to the severe drought that affected the landscape and the neighbouring group ranches. All the ivory from the carcasses were recovered and surrendered to Kenya Wildlife Service (KWS).

OCT 18 - ELEPHANT MORTALITY

Reported by: Palalet, In Charge, Motikanju Sector
Report received by: Radio Operator
Area covered: Motikanju area

Summary: While on their normal routine patrol, our Rangers found an elephant carcass. Upon observation, the tusks of the elephant were still intact, and there was no visible injury on the body. The matter was immediately reported to the Amboseli Community Warden who ordered the tusks to be removed and taken to KWS station.

OCT 21 / 22 - BUFFALO RESCUE AND MORTALITY

Reported by: Olpusare Conservancy Ranger
Report received by: Radio Operator
Area covered: Olpusare Conservancy

Summary: Our Radio Room received information of two buffaloes stuck in the mud canals. The incidents of wildlife stuck in the mud increased as they were searching for fodder in the current prolonged dry season. An operation was planned for rescuing the buffaloes using the JCB tractor the next day. Unfortunately, one of the buffaloes succumbed during the night, while the other buffalo was successfully rescued the next day.

OCT 24 - GAZELLE POACHING AND ARREST

Reported by: Moringe - Rombo Ranger In charge
Report received by: Radio Operator
Area covered: Olgirra area

Summary: The Rombo Conservancy Rangers received a call from a community member, claiming he came across a freshly poached gazelle carcass. Immediately, our rangers responded and rushed to the reported position where they laid an ambush.

The ambush was conducted in collaboration with BLF and KWS rangers. After about 3 hours, the rangers saw four men approaching the site. Within 15 minutes, the rangers managed to arrest the suspects, which included 3 Tanzanians and 1 Kenyan. Pieces of fresh gazelle meat was also confiscated as evidence and were later taken to Illasit Police Station.

OCT 24 - GIRAFFE POACHING

Reported by: Lejesu, Inkisanjani
Report received by: Radio Operator
Area covered: Enkutoto area

Summary: Sergeant Lejesu received information from a community member of a poached giraffe seen in Enkutoto. The Sergeant led our Rangers to the incident site where they found a fresh giraffe carcass with some parts removed. Our radio operators shared the information with our Rangers Operation Commander, who passed the news to the Amboseli Community Warden. There were no suspects or leads following the incident.

OCT 26 - ZEBRA POACHING

Reported by: Lejesu, Inkisanjani
Report received by: Radio Operator
Area covered: Enkutoto area

Summary: Our Wildlife Pays Reporter for Enkutoto reported to Segeant Lejesu, that he saw some lights in the bushes from his boma. The Sergeant and his team set an ambush, and at around 3:30 am, the team saw two motorbikes. Our rangers stopped the motorbikes, but the riders managed to turn back. However, one of the riders had left his motorbike. The motorbike had a sack of zebra meat on it and a torch. The rangers confiscated the evidence (meat, torch and motorbike) and took them to Loitoktok Police Station.

FIRE INCIDENTS

Reported by: Chyulu 2, Kanzi Conservancy, and Fire Rangers
Report received by: Radio Operators
Area covered: Kanzi Conservancy and bordering Chyulu Hills National Park

Summary: Various wildfires were reported within Kuku Group Ranch this month. The fires within Kuku were concentrated in areas around the Chyulu. Two wildfires within Kuku occurred in the following dates:

15th - Mkao: the air tractor put off the fire and our team mopped up to ensure flare ups do not reignite.

22nd - Kerai Hill: rangers with the air tractor responded to the fire quickly.

Additionally, MWCT rangers supported partners in the ecosystem to fight various fires:

5th - 10 MWCT rangers supported KWS in fighting fires at CHNP with BLF, SWT, and Tsavo Trust. The fire was huge and lasted 2 days.

16th - The fire team at Chyulu 2 (MWCT, KWS, BLF and SWT) responded and put off fires at Kibarani, Tsavo West National Park.

17th - The fire team Chyulu 2 (MWCT, KWS, BLF and SWT) responded and put off fires at Kipara, Chyulu Hills National Park.

23rd - Fires to the north of Shetani Lava were put off by the air tractor.

24th - MWCT rangers supported firefighting operations in Kathekakai.

27th - MWCT rangers supported firefighting operations in Metava.

MWCT, as the acting Project Office for Chyulu Hills REDD+ Carbon Project, hired an air tractor for two months to help fight fires within the landscape. This month, the air tractor responded to all 14 fires around the Project area. A total of 97 flight hours were covered over 22 days. The longest flight was taken on the 24th as the air tractor flew for about 11.3 hours that day.

INCIDENTS & CONFLICTS



Oct 10: Elephant calf died in Langata.



Oct 18: Elephant carcass with tusks intact.



Oct 24: Poached gazelle.



Oct 26: Poached zebra.

NOV

NOV 3 - LION MORTALITY (SPEARING)

Reported by: Olpakaai Rangers
Report received by: Radio Operator
Area covered: Olpakaai

Summary: During a regular patrol, our Olpakaai Ranger came across a male lion carcass inside the lava. The carcass was about 4-5 days old. Our Simba Scouts team and rangers immediately went to the incident location where they verified that the lion had died of spear wounds. They observed two spear wounds (one around the neck and the second on the belly. Our team contacted KWS, and they collected the teeth and claws. KWS is continuing to investigate possible suspects.

NOV 25 - POACHING AND ARREST

Reported by: Morinke Kipaa, Rombo Conservancy
Report received by: Radio Operator
Area covered: Njukini

Summary: Ranger Morinke recieved a phone call from the head of BLF rangers suggesting a joint operation at Elerai Njukini area. Morinke, together with eight rangers, joined BLF that evening and laid an ambush until 4:30 am until they saw three motorbike headlights coming towards them. The rangers intercepted and stopped the motorbikes, but unfortunately, three suspects escaped. The team managed to arrest two suspects carrying sacks of fresh meat. It is suspected that the sacks contained gazelle and warthog meat. Both suspects were taken to Taveta police station for statements.

NOV 25 - HIPPOPOTAMUS MORTALITY

Reported by: Sgt Lenkerai Sereka, Olpusare conservancy sector
Report received by: Radio Room
Area covered: Olpusare Conservancy

Summary: Our rangers had spotted a weak hippopotamus. However, as soon as the Admin Sergeant arrived to the site, he confirmed that the hippo had died. Our team suspects that the cause of death was drought related.

DEC

DEC 31 - POACHING AND ARREST

Reported by: Sgt. Lenkai Lejesu, In-charge Rapid Unit.
Report received by: Operations Ranger Commander
Area covered: Lolmaroro area

Summary: Sgt. Lejesu received a phone call from an informer late in the evening of New Year's Eve. The informer had seen two motorbikes riding into the bush and suspected that they were poachers. Sgt. Lejesu and his team left immediately to track the suspects, once they arrived in position, they laid an ambush. An hour later, they saw lights from two motorbikes coming towards them. Ten minutes later, our rangers stopped the first motorbike. They managed to arrest the suspect, who had also been carrying two sacks of bushmeat. Two minutes later, another motorbike was seen from a distance. The suspect of the second bike alighted from the motorbike before reaching our rangers and escaped into the bush, leaving behind his motorbike and sacks of bushmeat. The first suspect, together with two motorbikes, and the sacks of bushmeat were taken to Loitokitok police station for statements.




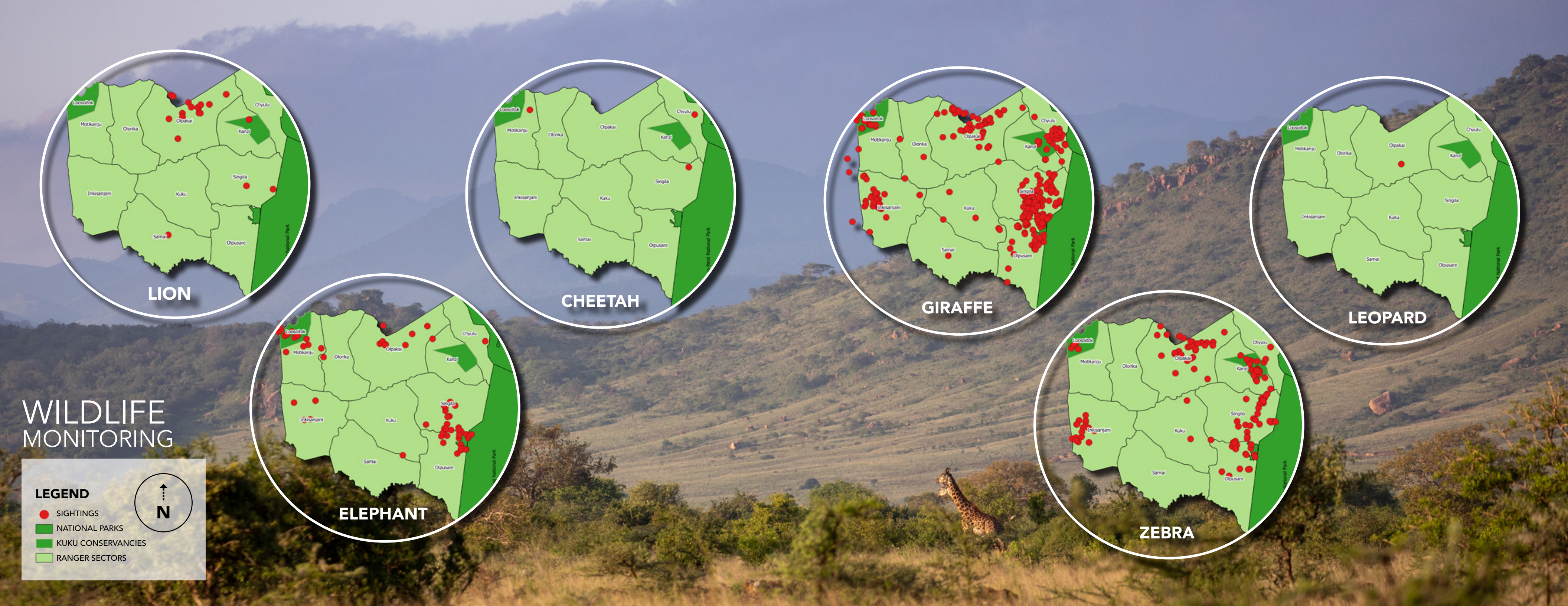
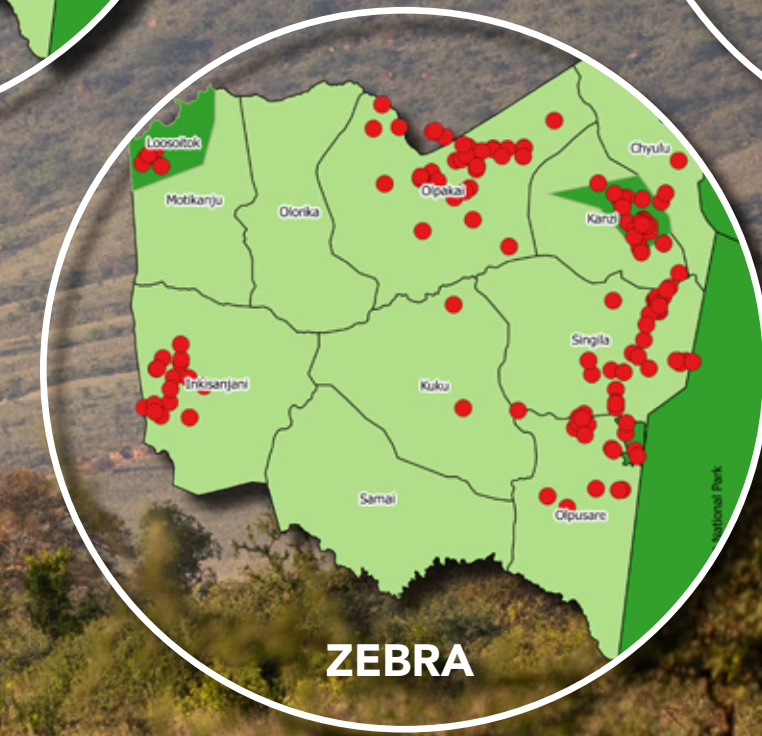
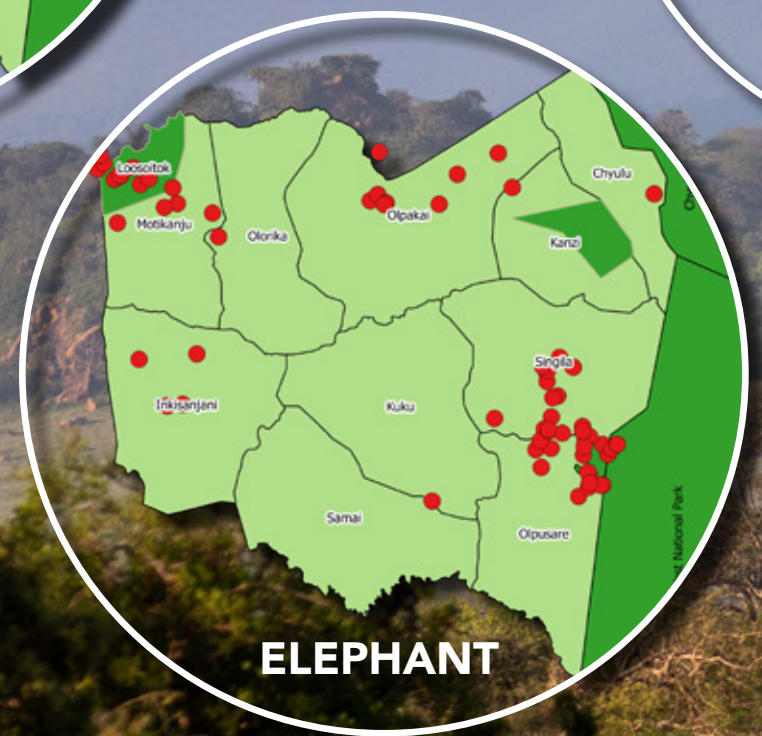
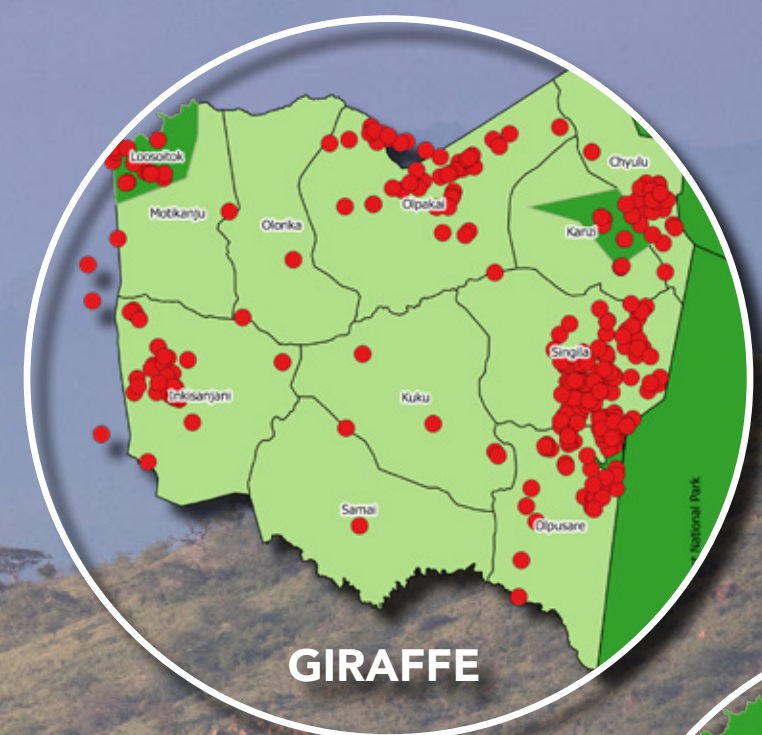
Dec 31: The two motorbikes and confiscated sacks of bushmeat.

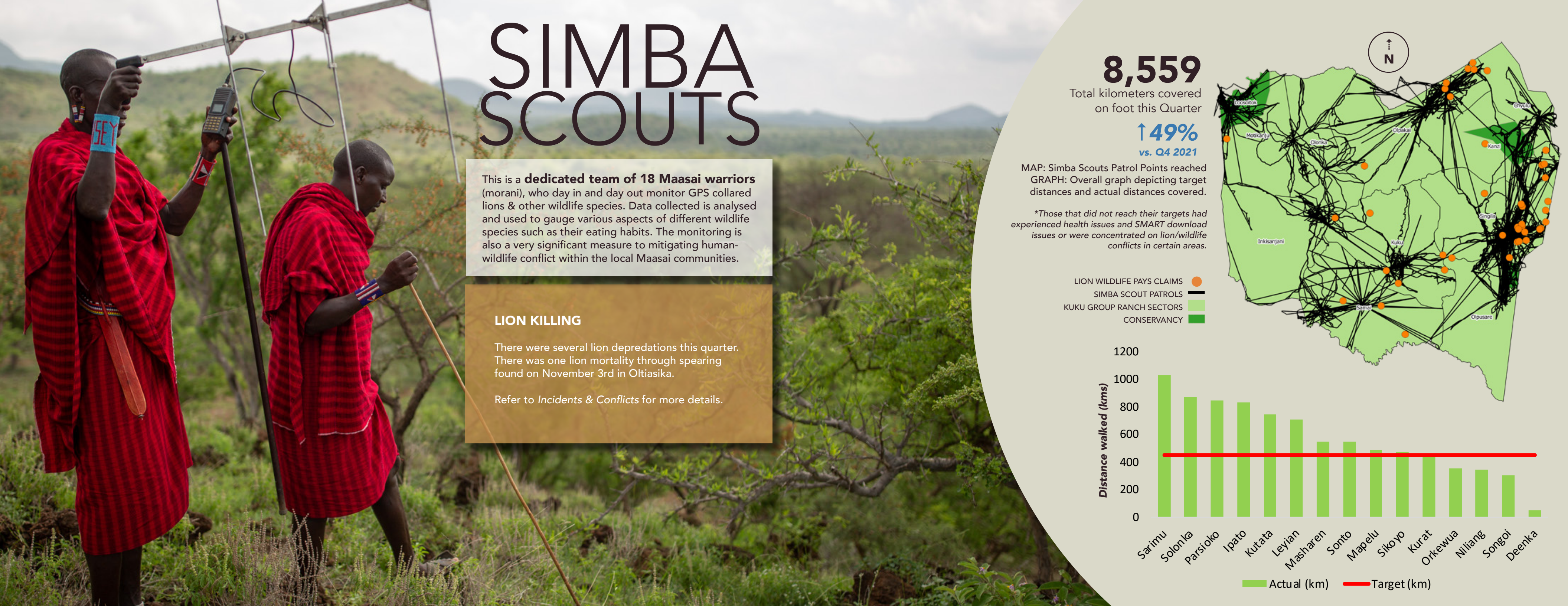
WILDLIFE MONITORING

LEGEND

- SIGHTINGS
- NATIONAL PARKS
- KUKU CONSERVANCIES
- RANGER SECTORS







SIMBA SCOUTS

This is a **dedicated team of 18 Maasai warriors** (morani), who day in and day out monitor GPS collared lions & other wildlife species. Data collected is analysed and used to gauge various aspects of different wildlife species such as their eating habits. The monitoring is also a very significant measure to mitigating human-wildlife conflict within the local Maasai communities.

LION KILLING

There were several lion depredations this quarter. There was one lion mortality through spearing found on November 3rd in Oltiasika.

Refer to *Incidents & Conflicts* for more details.

8,559

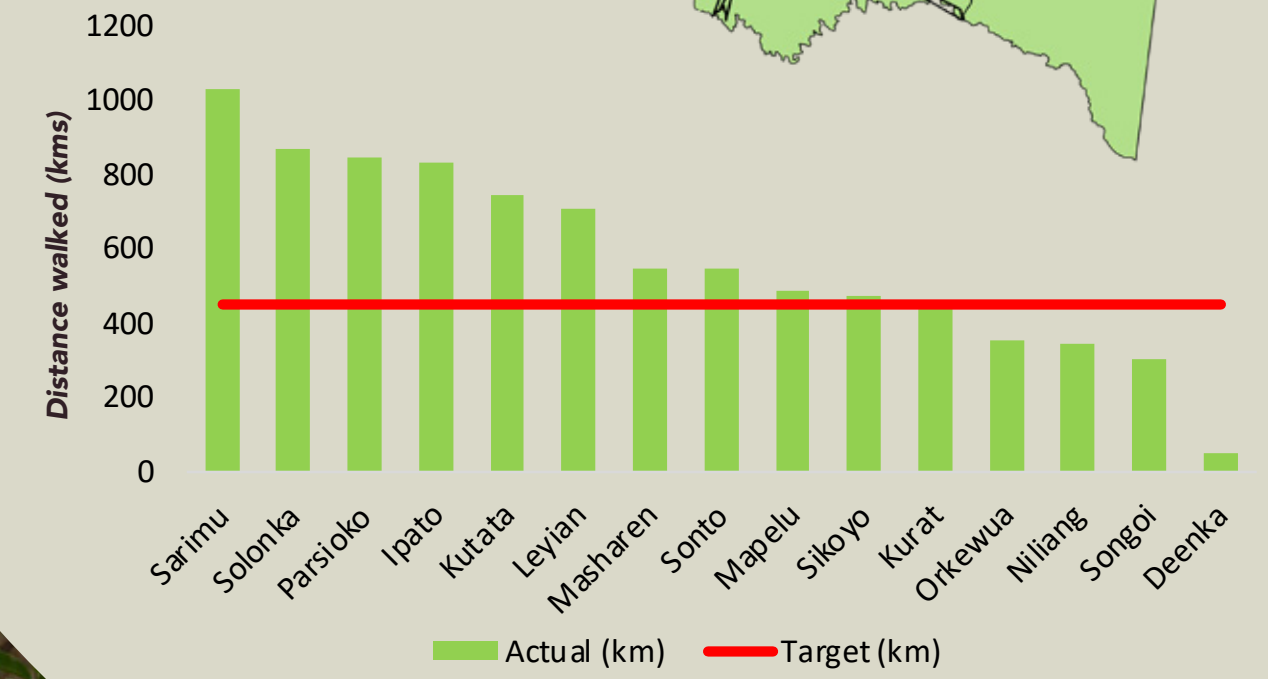
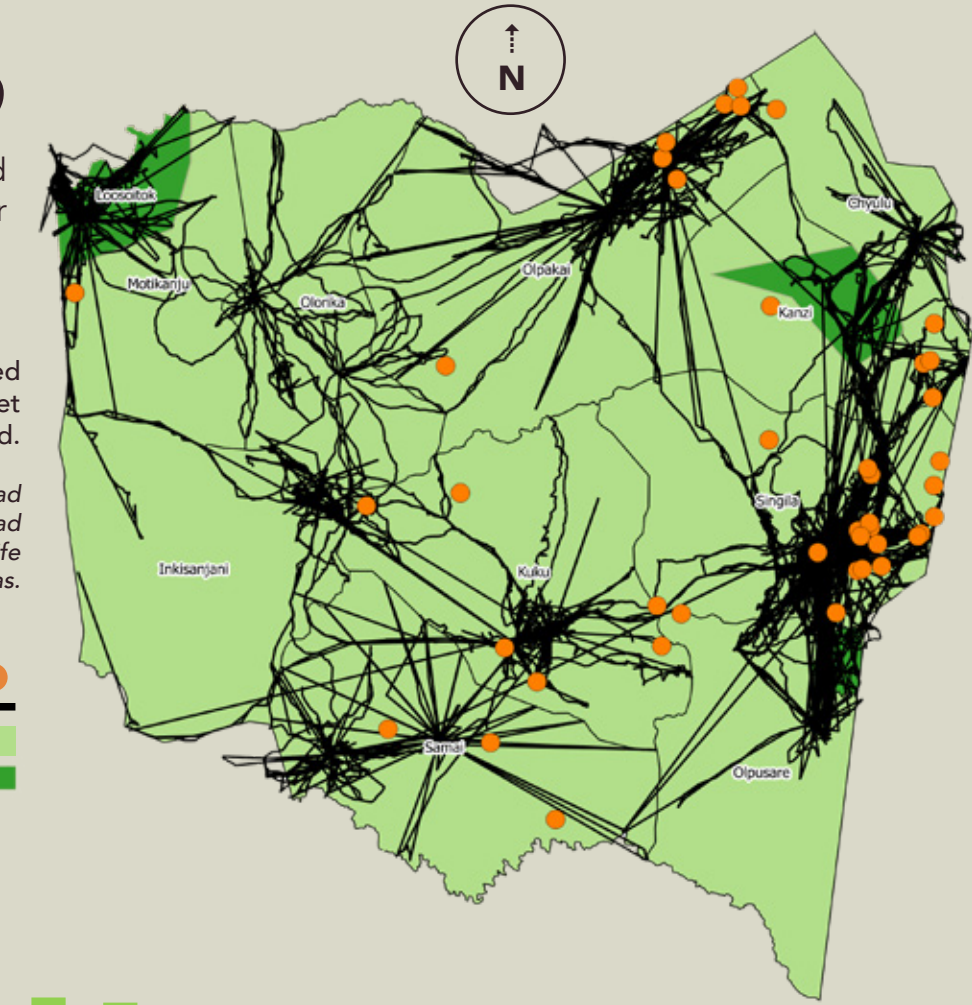
Total kilometers covered on foot this Quarter

↑ 49%
vs. Q4 2021

MAP: Simba Scouts Patrol Points reached
GRAPH: Overall graph depicting target distances and actual distances covered.

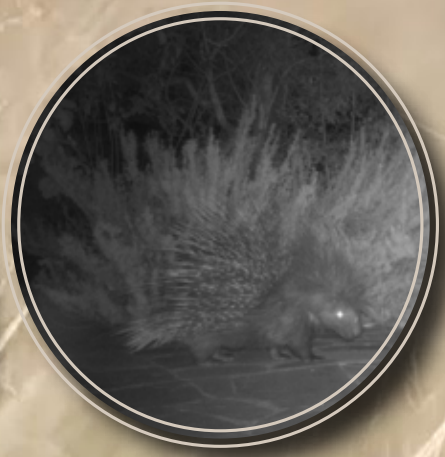
**Those that did not reach their targets had experienced health issues and SMART download issues or were concentrated on lion/wildlife conflicts in certain areas.*

- LION WILDLIFE PAYS CLAIMS
- SIMBA SCOUT PATROLS
- KUKU GROUP RANCH SECTORS
- CONSERVANCY



CAMERATRAP SIGHTINGS

- ✓ GIRAFFE
- ✓ ELEPHANT
- ✓ HYENA
 - Spotted
 - Striped
- ✓ WARTHOG
- ✓ LION
 - Female
 - Male
 - Cubs
- ✓ LEOPARD
- CHEETAH
- GAZELLE
 - Grant's
 - Thomson's
- BABOON
- IMPALA
- HARTEBEEST
- WILDEBEEST
- ✓ ZEBRA
- ✓ BUFFALO
- DIK DIK
- ✓ JACKAL
- ✓ PORCUPINE
- KORI BUSTARD
- HONEY BADGER



\$26,541

**TOTAL PAY OUT
OF CLAIMS
FOR Q4**

563
INCIDENTS

↑35%
vs. Q4 2021

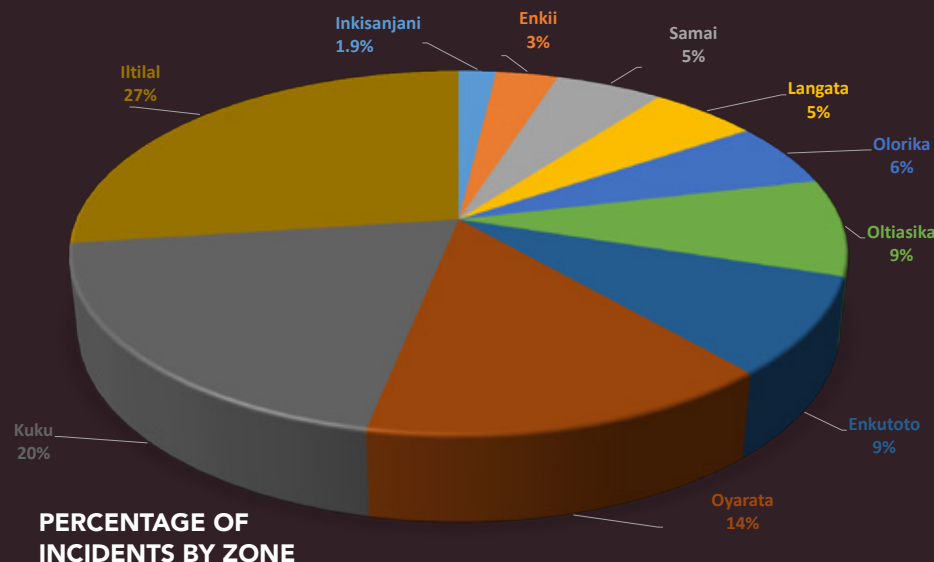
4
**AVERAGE NUMBER
OF INCIDENTS
PER DAY**

1,300
**AVERAGE MONTHLY
KMS TRAVELLED PER
VERIFICATION
OFFICER**

WILDLIFE PAYS

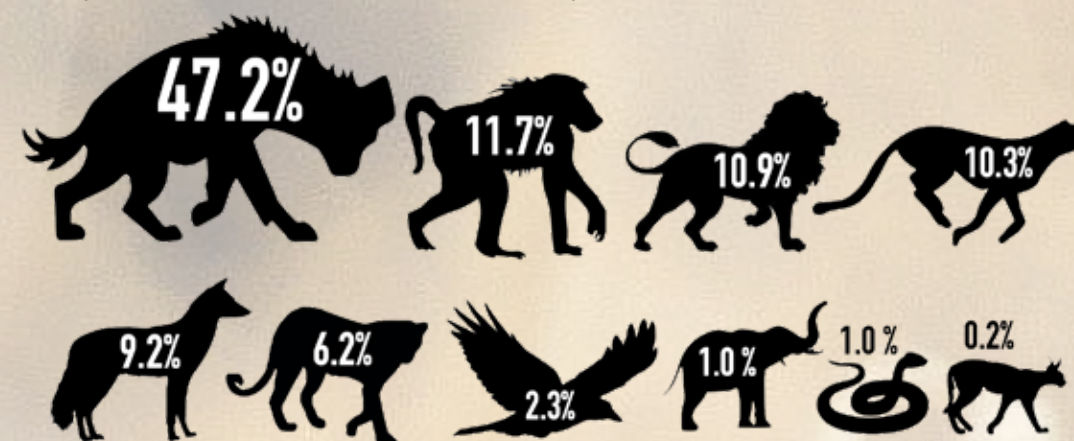
MWCT, in conjunction with the employment of Rangers and Simba Scouts, protects the major predators of our ecosystem in Kuku Group Ranch, through the Wildlife Pays Compensation Programme. Through a rigorous multi-layer system of verification and dedicated officers, Wildlife Pays is able to detect and prevent possible cases of fraud that might undermine the programme. Payments are made quarterly and compensation is based on four types of livestock losses to ensure the Maasai pastoralists utilize good husbandry practices to prevent greater or further losses. Community outreaches and meetings are also an integral part of our predator protection strategy. Rangers, along with prominent community figures and MWCT staff, conduct meetings with communities that are feeling increased pressure of predation, as well as with the young Maasai warriors (Morani), to prevent the groups from any lion killing in retaliation to livestock losses.

For annual comparison purposes, this total of **563** claims is up from the 417 claims recorded during Q4 of 2021. The Ittilal Wildlife Pays zone accounted for the highest number of incidents at 132 of the **approved 487**, equivalent to 27.1% of the total losses, while Inkisanjani (9/1.8%) zone had the least number of incidents.



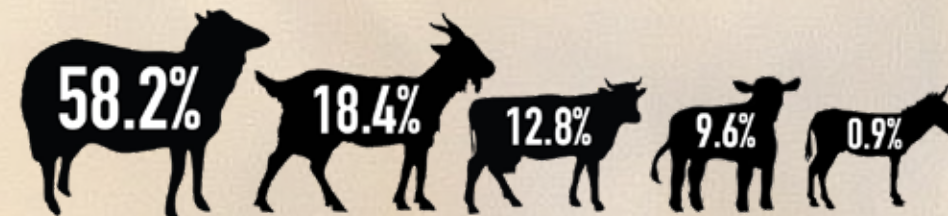
PREDATORS / WILDLIFE SPECIES

The most livestock taken in relation to predators were due to Hyena (230) followed by Baboon (57), Lion (53), Cheetah (50), Jackal (45), Leopard (30), Bird (11), Elephant (5), Snake (5), and Caracal (1). Specific percentages for the amount accounted for from each predator are reflected in the info graphic below.



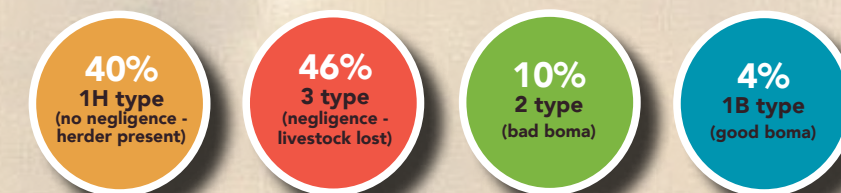
HEADS OF LIVESTOCK

A total of **759** heads of livestock were killed this quarter. The majority of livestock killed by predators were sheep (442/58.2%), followed by the other livestock species seen in the info graphic below.



CLAIMS & LOSS TYPES

The total pay-out of claims was **3,292,400 Ksh** (USD 26,541), which is higher than the amount paid in Q4 2021 (2,440,500 Ksh / USD 21,502).



Loss type 1H - The livestock was killed while a herder was present.

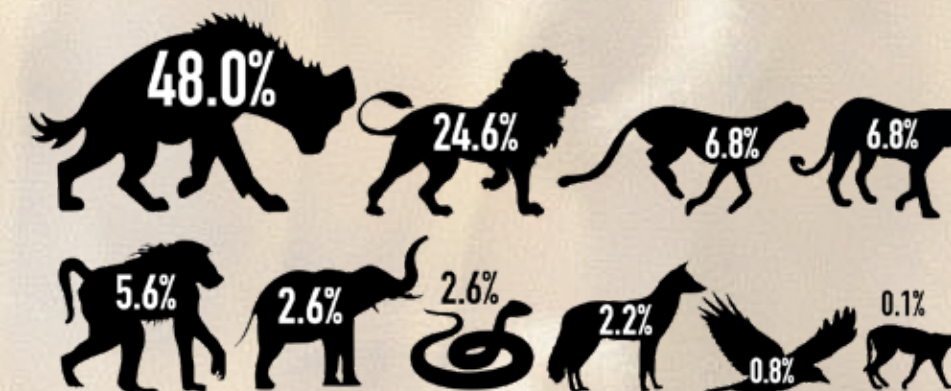
Loss type 1B - The livestock was in the boma when the predator attacked and the boma is well constructed and maintained.

Loss type 2 - Livestock was in the boma when the predator attacked but the boma was not of sufficient quality to protect the livestock within from predators.

Loss type 3 - The livestock was lost when the predator attacked. No herder was present.

Claims with loss type 1H or 1B receive the highest level of compensation. Loss type 2 claims have the second highest level of compensation and loss type 3 has the lowest level of compensation.

PREDATOR PAY-OUT VALUE PERCENTAGES



LAND RESTORATION / BEE-KEEPING

OLPUSARE CONSERVANCY

Olpusare Conservancy is a 2,000 acre landscape with a 450 acre wetland which has suffered from unsustainable farming techniques for many years. Our land restoration project aims to restore the wetland, its soil and its spring, with sustainable farming and reforestation activities. This quarter, the following activities were achieved:

ORGANIC FARM PROGRESS

This quarter, we harvested cauliflower, carrots, spinach, eggplants, sukumawiki, cabbage, and plenty of cooking herbs (lemongrass, mint, oregano, coriander, and rosemary). Seedlings planted included chillies, baby spinach, lettuce, rocket, green pepper, and spring onion. We're maintaining a variety of fruit trees including mango, banana and passionfruit.



HIVE CHECKS

SAVE THE ELEPHANTS HIVES

Enkii - 9/15 hives colonized
Inkisanjani (Women's Group) - 12/15 hives colonized
Inkisanjani (Farmer) - 15/15 hives relocated
Moilo - 22/30 hives colonized

MWCT HIVES

Campi ya Kanzi - 2/3 hives colonize
CCRC - 17/19 hives colonized
Chyulu - 2/3 hives colonized
Naga D & B - 2/2 hives colonized

REDD+ HIVES

Northern Kibwezi - 49/80 hives colonized
Southern Kibwezi - 24/80 hives colonized
Rombo - 174/250 new hives delivered
Mangalete - 17/80 new hives delivered

INDIVIDUALLY OWNED HIVES

Enkii - 2/3 hives colonized
Inkaraatak - 5/10 hives colonized
Olpusare - 16/20 hives colonized

REDD+ CARBON PROJECT

The Chyulu Hills REDD+ Project aims to protect the Chyulu Hills landscape, its forests, woodlands, savannahs, wetlands and springs, and its wild populations of Africa's best known animals. It is 100% owned and managed by local institutions that either own the land or manage conservation and community programmes on behalf of the land owners.

The nine owners include **4 indigenous Maasai community groups**, Kenya's national parks authority (**Kenya Wildlife Service - KWS**), its national forest service (**Kenya Forest Service - KFS**) and three NGOs, **Maasai Wilderness Conservation Trust (acting Project Office - PO)**, **Big Life Foundation**, and **Sheldrick Wildlife Trust**. This quarter, the following activities were achieved:

OCT

- The PO delivered fire fighting equipment to our partners' Big life Foundation and Sheldrick Wildlife Trust. The equipment included: sleeping bags, roll mats, Eureka tents, head torches, haversacks, ground sheets, mess tins, spotlights, Camel bags, gloves, pairs of goggles, helmets, and fire beaters.
- An in-house refresher fire management training was carried out among ranger partners to sharpen our rangers' skills, reducing the response time to fires while enhancing fire safety.
- A consultant from Conservation International trained 5 soil samplers from Rombo, Kuku A, Kuku B, Mbirikani, and the East on a new Standard Operating Procedure (SOP) for soil sampling and range land monitoring.

NOV

- Executives from CI and Apple visited CHRP initiatives as well as other sites on KGR, such as Moilo grass seed bank, Kanzi, and Motikanju conservancies.
- The CHCT held a general end-of-the-year board meeting.
- Fire Management Plan outreaches continued in the East, Rombo, and Mbirikani. The PO visited 59 schools in the west and 54 schools in the east of Chyulu, with an average population of 500 students per school. We were able to use the Rivian EVs to mobilize our team throughout the outreaches.
- The project office conducted an assessment of the impact of fire on the vegetation and the carbon plots near areas prone to wildfires.

DEC

- The PO successfully finalized the second verification in November, which issued 3.1 million new credits to the market. It is now in the process of preparing for its third validation process.
- Several parents and students from the eastern community held a 3-day meeting to discuss the CHRP bursary beneficiaries
- The PO Communications department has been working on the framework and development of a new website to showcase everything the CHRP has been able to provide since its inception. We anticipate the new website to be up and running within the first quarter of 2023.

LIVELIHOODS PROGRAMME

MWCT supports **13 Maasai Women's Groups** to explore other income generating activities. While widespread illiteracy poses a challenge, MWCT pursues creative ways to build financial understanding and grow the capacity of the Maasai – especially women – to run profitable enterprises.

JUSTDIGGIT

A total of 14,400 bunds were dug and seeded in Olorika, 33,600 in Rombo and 12,000 bunds were seeded in Ilchalai. Two community meetings were held in Olorika and Rombo, and two grazing committee capacity building meetings were held in Olorika. The projects did not only support the livelihoods of 284 community members who were hired as casuals during the digging and seeding period, but also helped restore over 500 acres of degraded land. This provided pasture for the livestock, cooling down the environment and healthy rangelands for the current and future generations.

Grass seedbanks have provided sustainable income to the women through the sale of hay & grass seeds but also restored the degraded land of KGR by bringing back the lost indigenous grass. Olkaria and Enkusero grass seed banks are the newly established sites, and they are showing increased productivity.



RESTORATION GRASS SEED BANKS

Enkusero

25 Women members
10 Acre project area
Project area is under grass cover
Weeding and fence maintenance
639 kg of grass seeds harvested
200 kg of grass seeds sold

Olkaria

19 Women members
10 Acre project area
Project area is under grass cover
Weeding and fence maintenance
451 kgs of grass seeds harvested

Inkisanjani

16 Women members
10 Acre project area
Project area is under grass cover
Weeding and fence maintenance
521 kg of grass seeds harvested
200 kg of grass seeds sold

Langata

23 Women members
10 Acre project area
Weeding and fence maintenance

Enkii

20 Women members
10 Acre project area
85% Project area fully restored
Weeding and fence maintenance
714 kg of grass seeds harvested
524 kg of grass seeds sold

Moilo

10 Women members
10 Acre project area
90% Project area fully restored
Weeding and fence maintenance
1,379 kg of grass seeds harvested
145 kg of grass seeds sold

To ensure that the community benefits from our Health Programme, MWCT employs health staff, runs and supports several dispensaries and supplies medical equipment and essential drugs to the community.

*there were reductions in numbers due to mobility and access difficulties.



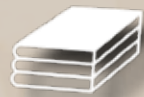
15 homestead
were visited as part of our community outreaches.

7 schools
were visited during for furthe School Health Education seminars.

707 students
were dewormed.

11 community
Sexual Reproductive Health & Rights meetings were conducted with 39 men and 200 women.





27
Schools supported



61
Teachers employed



13
Support staff



10,177
Students enrolled
52% Boys **48%** Girls



64
Scholarships
18
Active



207
Bursaries
54
Active

ACHIEVEMENTS

Ittilal primary school has the highest enrolment of pupils, each stands at **1,014** enrolments.

We continue to meet all the operational costs of Ittilal Kanzi Primary School, which includes but not limited to employment of **13** teachers, supply of school stationery, provision of tapped water, provision of solar power etc.

We were able to provide an additional **35** students with scholarships through a grant from Apple. As well as **3** of the students we support at Naisula School have been granted admission to further their education at Strathmore University.

CHALLENGES

Some schools in Kuku Group Ranch such as Inkisanjani, Ittilal and Elangata do not have adequate classrooms to cater for their high enrolments. They are also experiencing shortage of teachers.

ENROLLMENT

	School Name	Boys	Girls	Total
1	Ittilal Secondary	129	109	238
2	Enkii Boys Secondary I	457	-	457
3	Oyarata Primary School	129	127	256
4	Nolasiti Primary School	114	156	270
5	Neiti Nursery School	18	29	47
6	Marlal Primary School	233	197	430
7	Enkii Primary School	227	273	500
8	Shokut Primary School	164	125	289
9	Enkolili Primary School	231	205	436
10	Leinkati Primary School	67	71	138
11	Elangata Enkima Primary	476	449	925
12	Olorika Primary School	313	294	607
13	Oltiasika Primary School	206	157	363
14	Inkisanjani Primary School	526	443	969
15	Olkaria Primary School	397	335	732
16	Kuku Primary School	160	203	363
17	Enkusero Primary School	216	182	398
18	Moilo Primary School	117	113	230
19	Ittilal Primary School	492	522	1,014
20	Loosoitok Primary School	104	131	235
21	Kaitoriori Nursery School	108	106	214
22	Samai Primary School	171	173	344
23	Oldonyo Lenkai Nursery	19	21	40
24	Manyata Nursery	12	14	26
25	Esoit Nursery	39	34	73
26	Inkisanjani Secondary	159	172	331
27	Loonkiito Primary	123	129	252
Total		5,307	4,870	10,177

EDUCATION
PROGRAMME

PARTNERS & SUPPORT

LEONARDO DICAPRIO FOUNDATION

KENYA WILDLIFE SERVICE

newCourse

IFAW

CAMPI YA KANZI

ZSL LET'S WORK FOR WILDLIFE

Elephants and Bees Project SAVE THE ELEPHANTS

THE WILDCAT FOUNDATION

CONSERVATION INTERNATIONAL

Jubilee INSURANCE

gofundme

UNDP

MAASAI WILDERNESS CONSERVATION FUND

LE ROSEY INSTITUTE

FON FOCUSED ON NATURE

TSAVO TRUST

mabel access, education, equity, period.

Hiltz FOUNDATION

gef

GLOBAL WILDLIFE CONSERVATION

EIF

Roy A Hunt Foundation

Georg Waechter Memorial Foundation

Microsoft

Google

Dropbox

TCS NEW YORK CITY MARATHON

Marshall Family

Leila and Mickey Straus Family Foundation

THANK YOU - ASANTE SANA

We are grateful for the continuous support that we receive from our donors and partnered organizations that aid us in achieving our goals.



MAASAI WILDERNESS CONSERVATION TRUST

WORKING WITH THE COMMUNITY FOR THE PROTECTION AND
PRESERVATION OF CULTURAL HERITAGE, THRIVING WILDLIFE
AND A VITAL ECOSYSTEM.

PASSIONATELY WORKING SINCE 1996

MAASAIWILDERNESS.ORG