



MAASAI
WILDERNESS
CONSERVATION
TRUST

QUARTERLY REPORT
JUL - SEPT 2019

3

“FOUNDER'S MESSAGE

Dear Friends in Conservation,

This Q3 was challenging, but also rewarding.

On the challenges: poor long rains left the Chyulu very dry with very little grazing. There was fierce competition for grasses among livestock and wildlife, with Kanzi Conservancy implementation getting really difficult. Signs of early rains in September triggered, for the first time in 3 years, a strong occurrence of bush fires, set to renew the grazing. We contained the damage as best as we could.

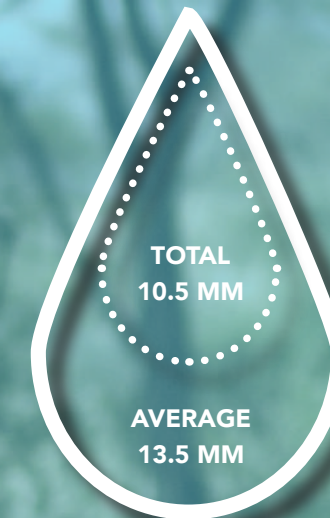
The rewards were multiple: a 8% decrease of incidents in Q3 2019 compared to the same quarter last year, suggests Wildlife Pays is causing better husbandry. The level of tolerance of predators by the community is still very high, with no incidents reported, even if lions hunts were prevented. Q3 is normally a challenging one, as wildlife and livestock concentrate in the same areas. Well done to the Simba Scouts and MWCT in preventing any wildlife killing!

Incredibly rewarding and really promising is the sale of 350,000 credits to Gucci. This will really get the Carbon Project reaching all corners of the 1,000,000 acres project area. We look positively at next season, when we aim to obtain much better and more efficient protection, through the augmentation of our programs, thanks to this sale. Also very exciting is the collaboration with Conservation International for a special grant from Apple, for grassland restorations.

A milestone achieved in this quarter has been the production of a Land Use Management Plan (LUMP). More than 4,000 Group Ranch members expressed their views on how to guarantee a better future to this marvellous land and its community. MWCT will now work with the community to get the LUMP adopted and implemented as per their desires.

Rains have arrived, grasses are blooming. We look at ending 2019 with high expectations for all our programs, from tourism to carbon, as well as grassland restorations.

*Warm greetings to all from the beautiful Chyulu Hills,
Luca Belpietro*



RAINFALL

TABLE OF CONTENTS

CONSERVATION

Wildlife Security & Habitat Protection
Ranger Patrol
Incidents & Conflicts

Wildlife Monitoring
Species Sighting
Lion Monitoring
Simba Scouts
Camera Trap Results

Predator Protection
Wildlife Pays

Meetings & Collaborations
REDD+ Carbon Project

LIVELIHOODS

Restoration & Bee-Keeping Pro
Anti - FGM (Alternative Rite of Passage)

HEALTH

Outreaches
Family Planning
Public Health

EDUCATION

Achievements
Challenges

PARTNERS & SUPPORT



WILDLIFE & HABITAT PROTECTION

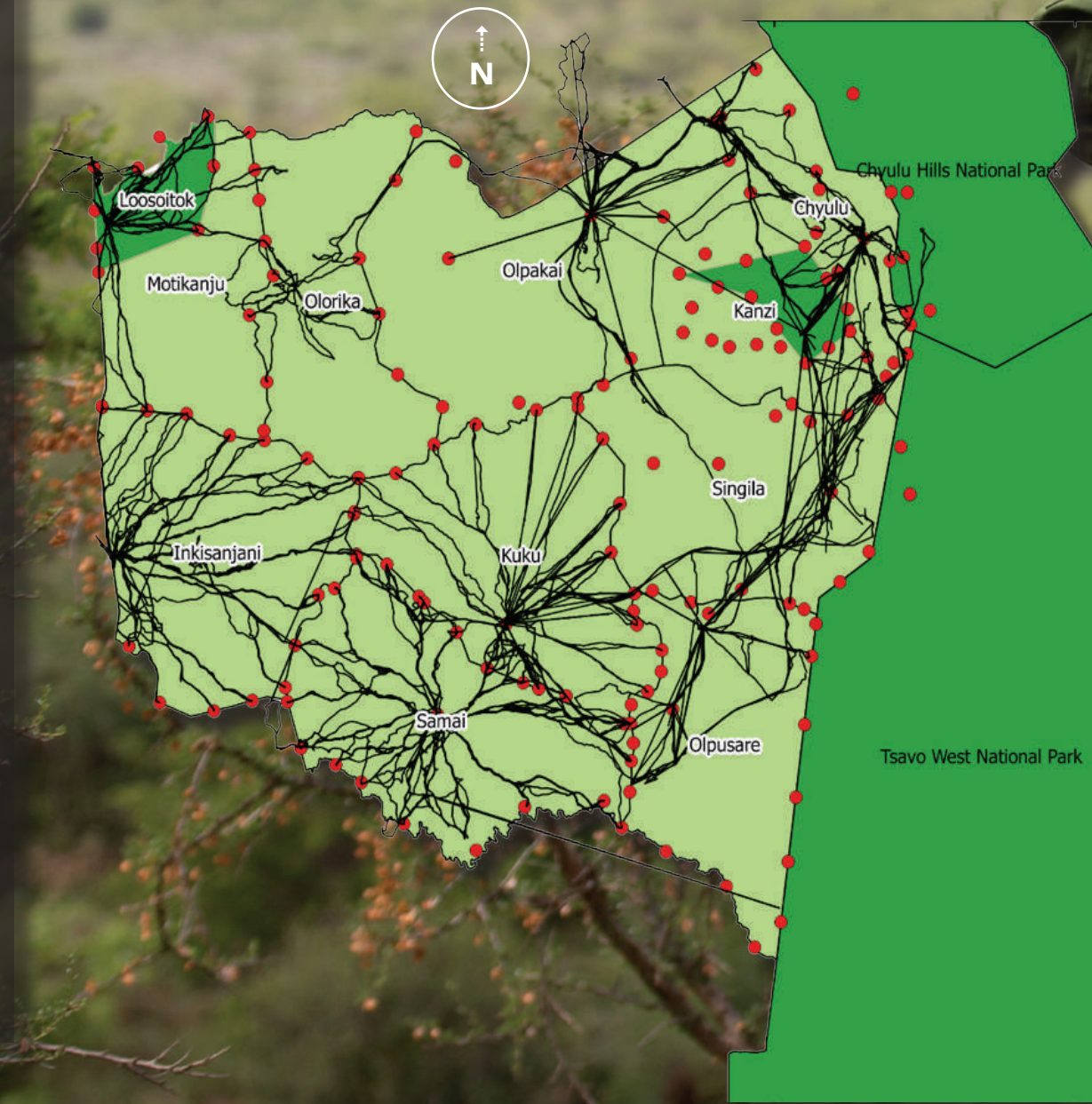
Samai sector covered the greatest distance (1,215km). The Motikanju and Kanzi Conservancies, and Ittilal 7A sector show no patrols due to being focused on monitoring livestock grazing and these sectors did not focus on routine patrolling during the quarter.

The team faced some technological challenges as we implement a new version of SMART, which had contributed to some data delays and low statistics. The conservation team is currently trouble shooting and exploring how this can be resolved for next quarter.

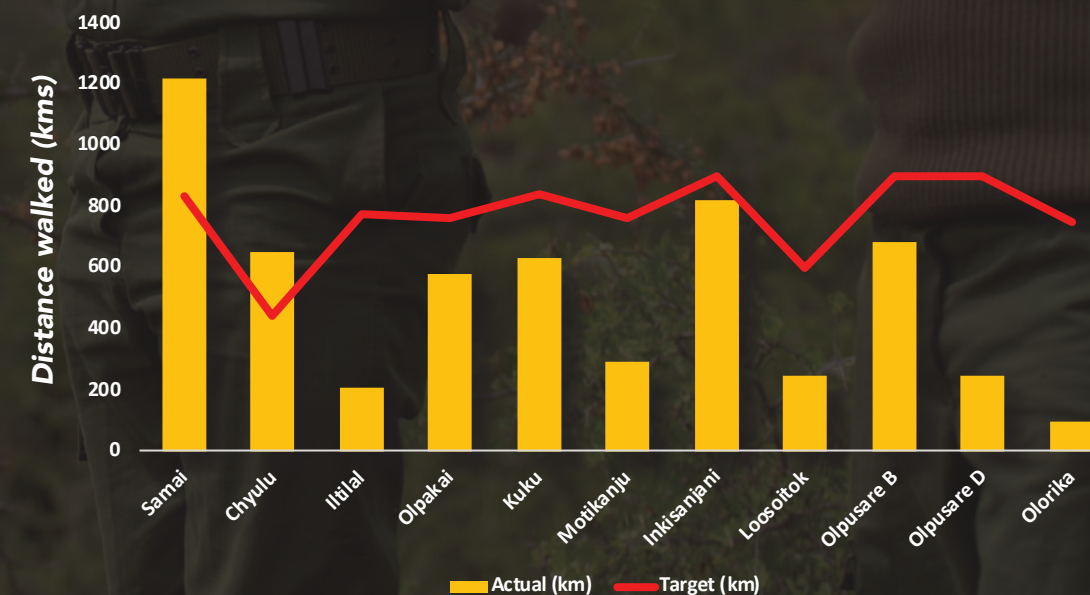
SECTOR	DISTANCE (Kilometers)	PATROL POINT TARGET	ACTUAL POINTS VISITED
Kanzi	0	0	0
Samai	1,215	60	58
Chyulu	648	39	27
Ittilal	204	51	1
Olpakai	576	39	14
Kuku	630	54	32
Motikanju	290	48	15
Motikanju 1a	0	0	0
Inkisanjani	817	48	38
Loosoitok	244	48	12
Olpusare B	681	51	30
Ittilal 7 A	0	0	0
Olpusare D	243	51	1
Olorika	92	66	7
Total	5,640	555	235

Map:
2019 Q3 Ranger Security Patrols points data

- RANGER PATROLS
- KUKU GROUP RANCH SECTORS
- NATIONAL PARKS



Ranger patrol targets and actual distances reached.
Distance targets vary depending on the size of the sector.



SMART & Cybertracker
Data Collection Trained



135
RANGERS

13
Sectors



6 to 8
Rangers per sectors



92
Dedicated Rangers for daily
Kuku Group Ranch patrols



5,640
Total kilometers covered
on foot this Quarter



↓31% ↓41%
*Q2 2019 *Q3 2018

INCIDENTS & CONFLICTS

QUICK FACTS

Wildfires:
3 - Chyulu Hills

Lion Hunt:
1 - Prevented

CCRC Staff, Rangers
and CYK staff rallying
together to put out
the fires.



Cow carcass hidden
under a tree and the
VO near the cow
stomach remains
buried under soil.



INCIDENT SUMMARIES

WILDFIRES

SEPTEMBER - Three wildfires happened within a short window of time during this quarter at Chyulu West Conservation Area. Our MWCT rangers, Campi Ya Kanzi staff and CCRC staff came together to successfully extinguish the fires as quickly as possible. Current investigation are underway to identify the culprits and the possible motivation behind these fires.

LION HUNT

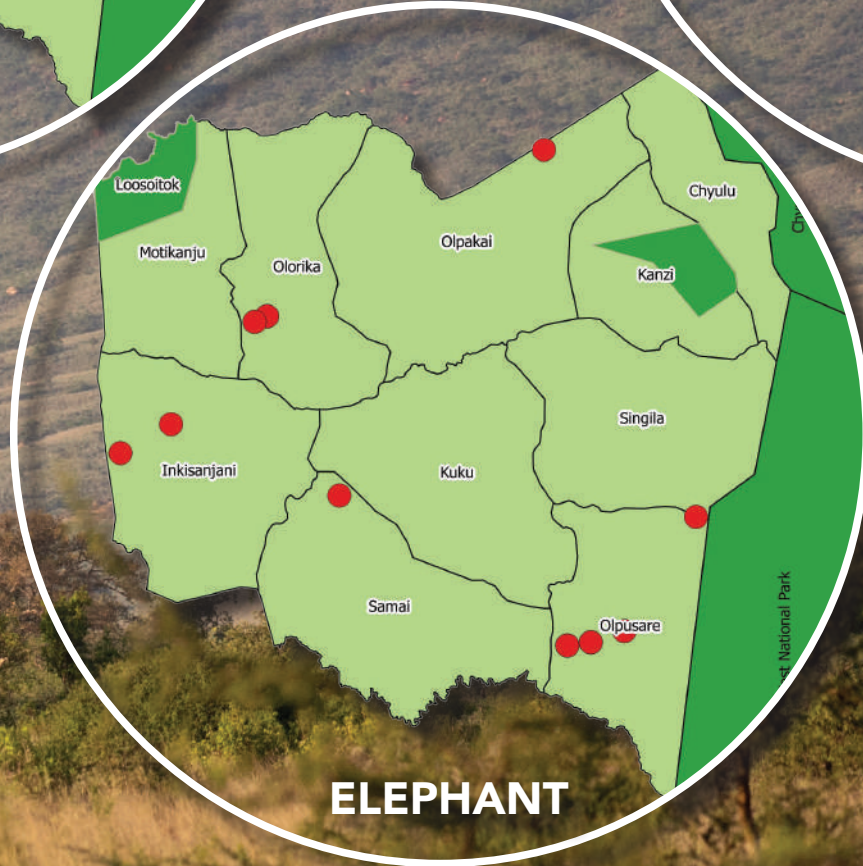
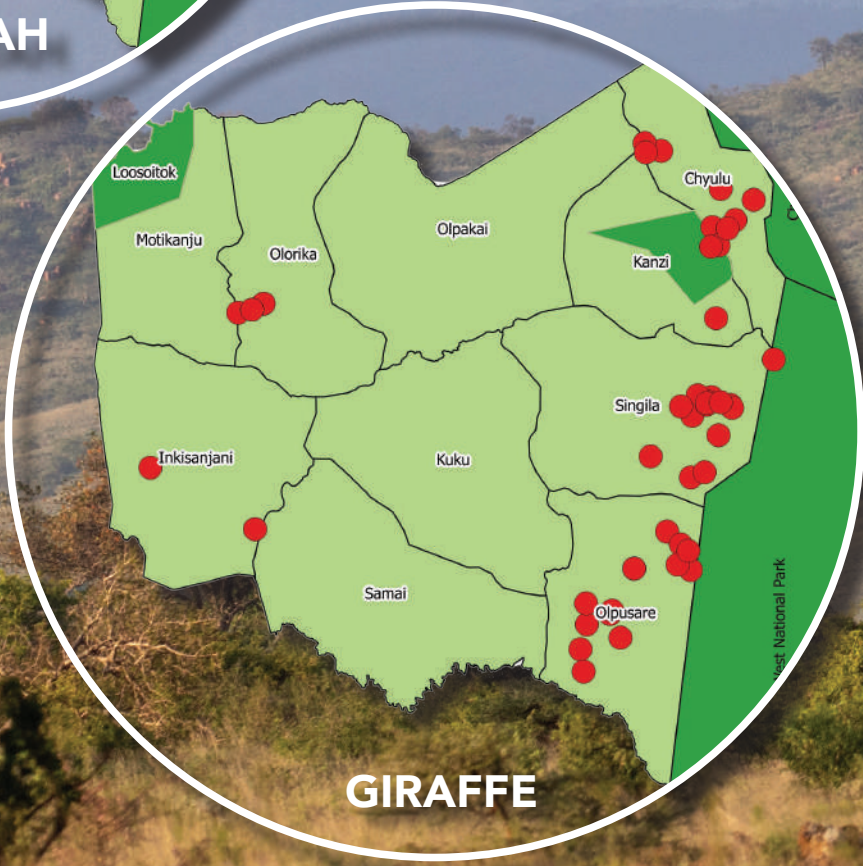
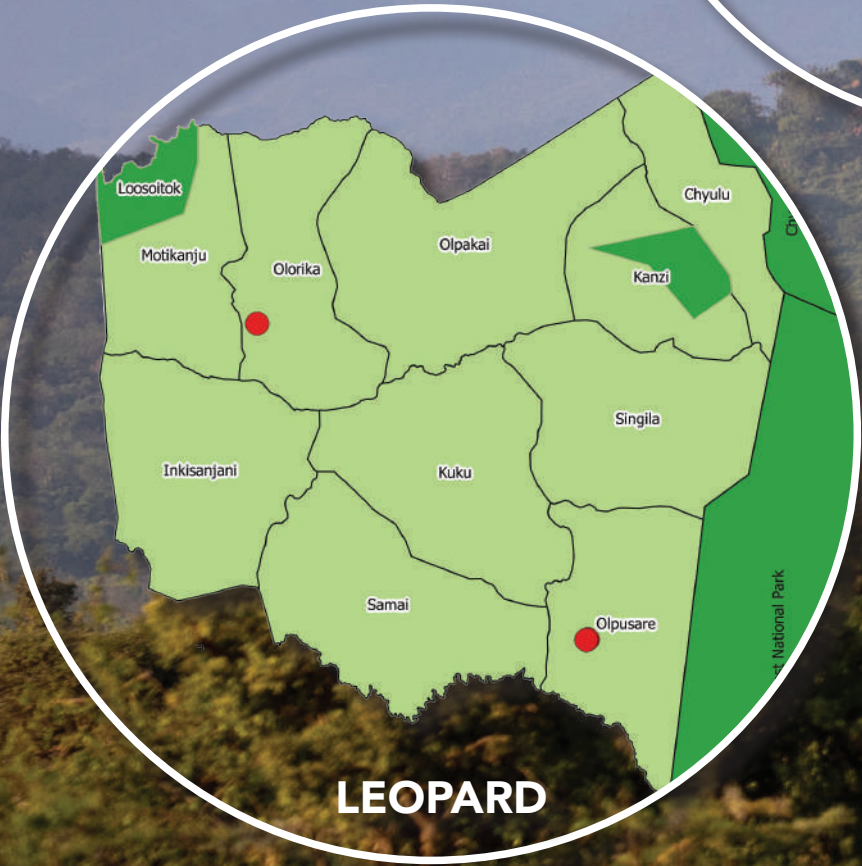
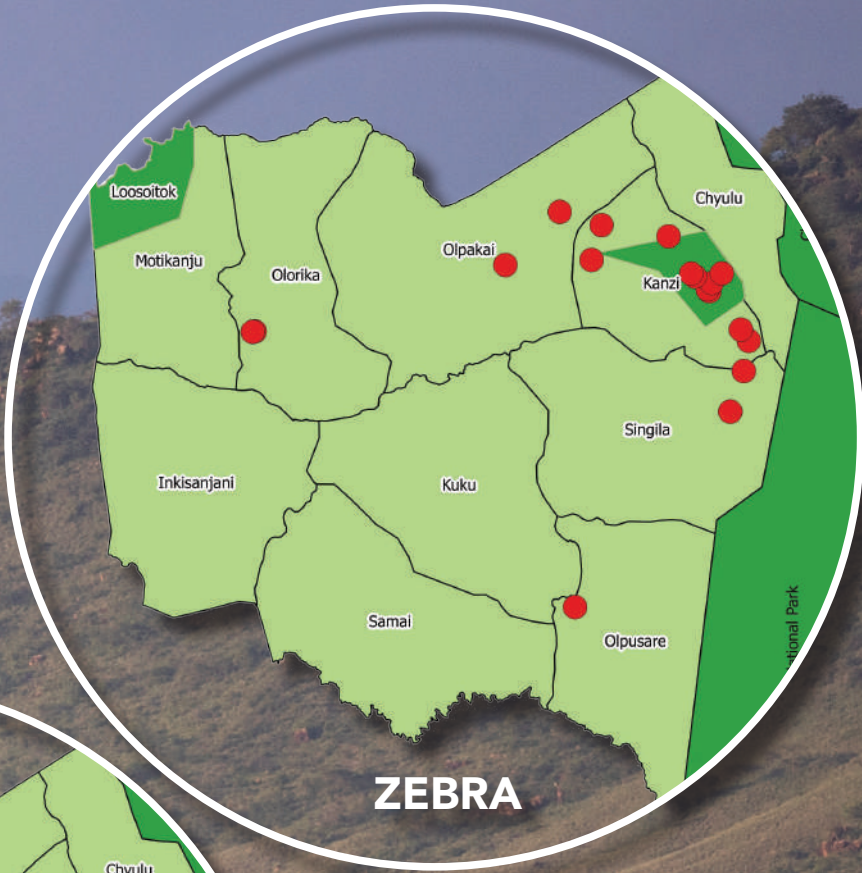
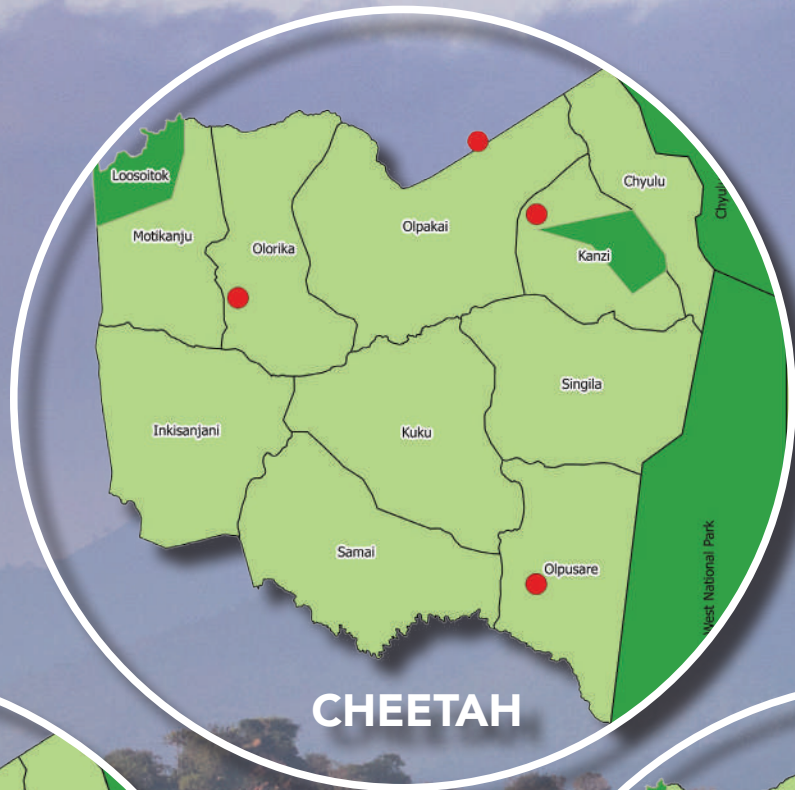
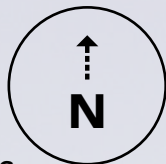
SEPTEMBER 21 / OYARATA ZONE

Many prides (collared and not collared) where involved in livestock depredations in September and led to one organized lion hunt in Oyarata. Two lions killed a cow during the day while the herder was present. The herder communicated to the village by running back to the boma for help, which resulted in a lion hunt. Our Simba Scout's coordinator, David Kanai, together with Wildlife Pays Verification Officer (VO), Joshua, responded and rushed to the incident area. Through a few conversations, our team was able to convince the local community members to abandon the lion hunt and no lions were harmed/killed.

WILDLIFE MONITORING

LEGEND

- SIGHTINGS
- NATIONAL PARKS
- KUKU CONSERVANCIES
- RANGER SECTORS





LION MONITORING

Collaring lions is a critically important step towards mitigating human-wildlife conflict. **Six** individual Lions on the Kuku Group Ranch (KGR) have been collared with GPS/VHF tracking collars and **2** of the pride's movement during **Quarter 3 2019** are illustrated in the descriptive map. The monitoring is also important as we are able to assess population growth rates and habitat utilisation on KGR.

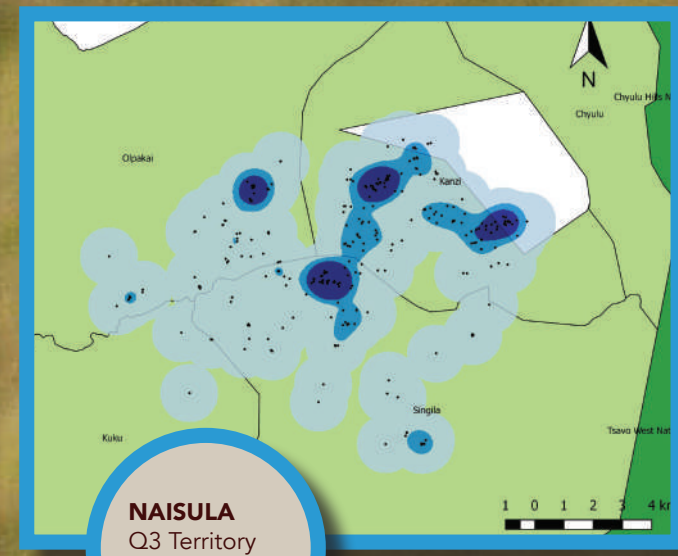
****Orkirikoi's (male), Namunyak's (female) & Mawoi's (female) collars did not transmit data through the satellite this quarter. Nesambu's (female) collar stopped working early April 2019. All 4 lions and their prides are still being monitored by the Simba Scout team on foot.***

● **Naisula (female)**
is part of a pride of 2 females. She spent most of her time in Kanzi conservancy, as well as Olbongo, Kuku plains and Olmanie areas. She was not involved in depredations this quarter.

- LION POINT EVERY 3 HRS
- 10% CORE TERRITORY
- 50% TERRITORY
- 95% TERRITORY
- KUKU GROUP RANCH SECTORS
- NATIONAL PARKS
- CONSERVANCIES

● **Marti (male)**
was successfully recollared on July 31st and was often seen moving with his brother. He spent most of his time in Kanzi conservancy, as well as Mukao, Koikuma, Loongisugin areas and Tsavo National Park.

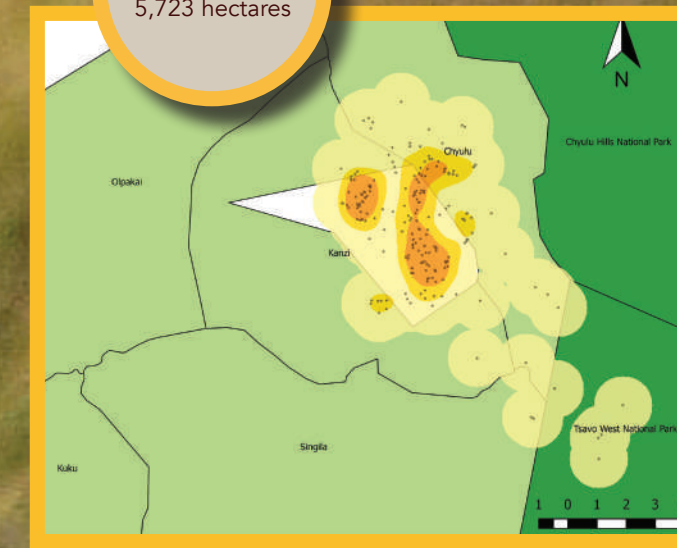
- LION POINT EVERY 3 HRS
- 10% CORE TERRITORY
- 50% TERRITORY
- 95% TERRITORY
- KUKU GROUP RANCH SECTORS
- NATIONAL PARKS
- CONSERVANCIES



NAISULA
Q3 Territory
10,052 hectares



MARTI
Q3 Territory
5,723 hectares



● **Orkirikoi** is part of coalition of 3 brothers. His collar stopped working via satellite and telemetry. The Simba Scouts team are on the look out for his location.

● **Mawoi** is part of a pride of 11 lions. Her collar stopped working via satellite. She moved out of her usual territory and visited Oyarata/Nolasiti area as well as into Chyulu NP. The Simba Scouts continue to monitor her movement via telemetry.

● **Namunyak** is part of a pride of 7-9 lions. Her collar stopped working via satellite and telemetry. The Simba Scouts team are on the look out for her location.

● **Nesambu** is part of a pride of 11 lions. She was last seen moving through Tsavo West National Park, Olkiriti, and the edge of the lava near Singila. The Simba Scouts continue to monitor her movement via telemetry.

****Re/De-collaring of lions have been scheduled for next quarter, to replace all the collars currently not working.***

SIMBA SCOUTS

This is a **dedicated team of 15 Maasai warriors** (morani), who day in and day out monitor GPS collared lions & other wildlife species. Data collected is analysed and used to gauge various aspects of different wildlife species such as their eating habits. The monitoring is also a very significant measure to mitigating human-wildlife conflict within the local Maasai communities.

LION KILLINGS

Although there were some lions involved in livestock killings this quarter and one lion hunt attempt, there were **ZERO LIONS KILLED**.

LION RE-COLLARING

JULY 30 - AUG 2

Male lion, Marti, was re-collared on July 31st. He was fitted with a new collar within Kanzi conservancy after showing up on a calling station together with another female.

The collaring operation was led by Lion Biologist, Lana Muller, conducted together with the MWCT Conservation team, the KWS team led by Dr. Poghon and his team from the Sheldrick Wildlife Trust Mobile Veterinary Unit.

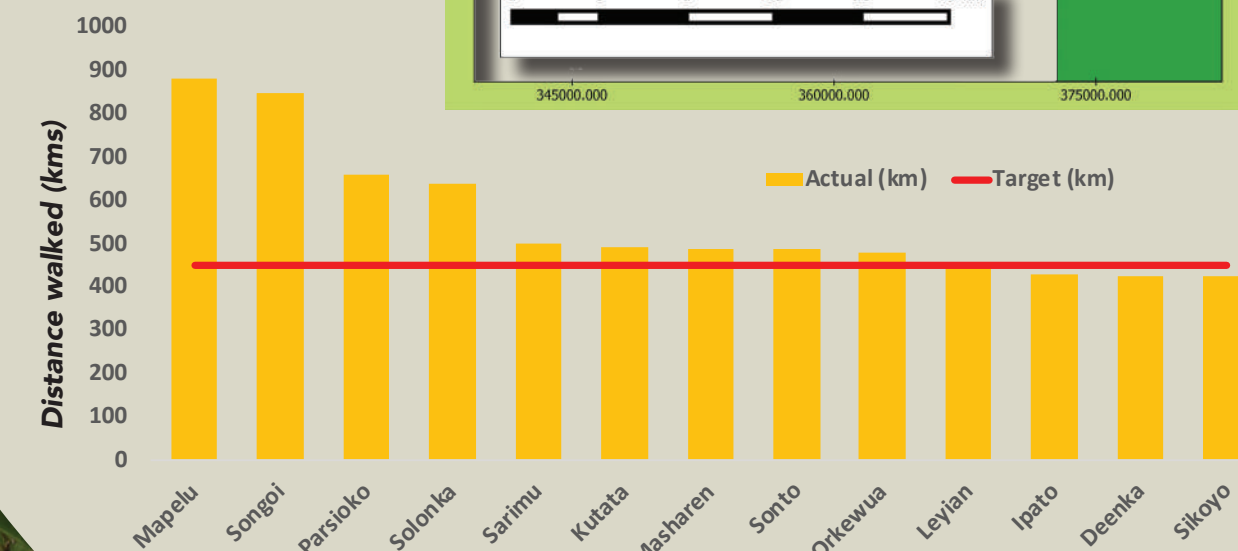
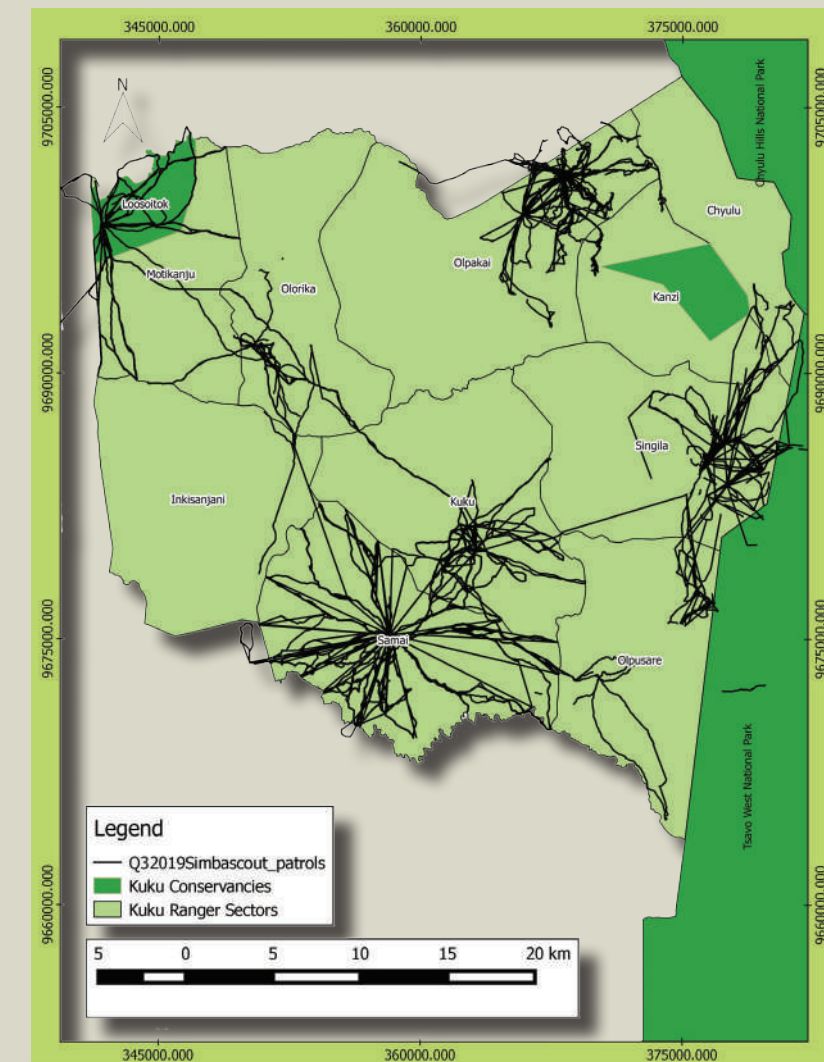
The team fitting the new collar onto Marti's neck and taking his biometrics to update his data records.

7,192
Total kilometers covered
on foot this Quarter

↑ **21%** ↑ **6%**
*Q2 2019 *Q3 2018

Right: Simba Scouts Patrol Points reached
Bottom: Overall graph depicting target distances and actual distances covered.

**Those that did not reach their targets had experienced SMART download issues or were concentrated on lion/wildlife conflicts in certain areas.*



Simba Scout

CAMERATRAP SIGHTINGS

- ✓ GIRAFFE
- ✓ ELEPHANT
- ✓ HYENA
 - Spotted
 - Striped
- ✓ WARTHOG
- ✓ LION
 - Female
 - Male
 - Cubs
- ✓ LEOPARD
- ✓ CHEETAH
- ✓ GAZELLE
 - Grant's
 - Thomson's
- ✓ BABOON
- ✓ IMPALA
- ✓ ELAND
- ✓ HARTEBEEST
- ✓ WILDEBEEST
- ✓ ZEBRA
- ✓ BUFFALO
- ✓ DIK DIK
- ✓ JACKAL
- ✓ KUDU
- ✓ PORCUPINE



\$21,432

**TOTAL PAY OUT
OF CLAIMS
FOR Q3**

↑21%
*Q2 2019

415
INCIDENTS

↓8%
*Q3 2018

4.5

**AVERAGE NUMBER
OF INCIDENTS
PER DAY
FOR Q3**

1,357

**MONTHLY KMS
TRAVELLED PER
VERIFICATION
OFFICER**

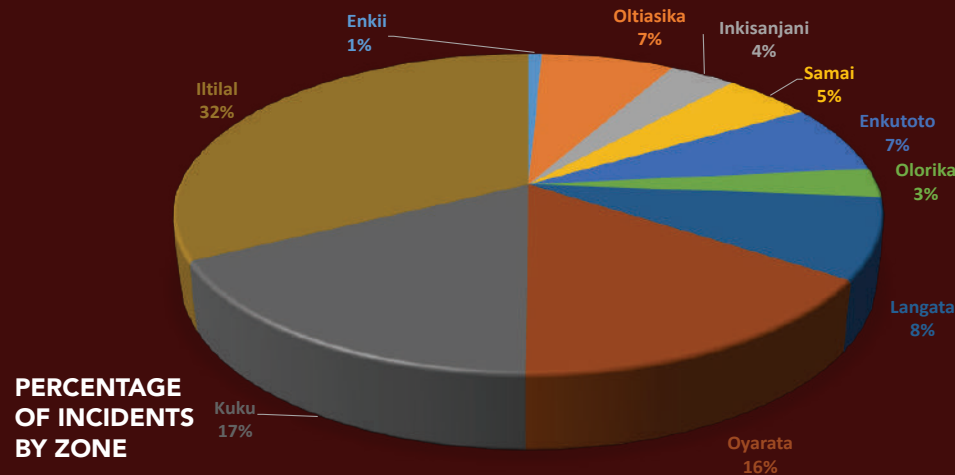
WILDLIFE PAYS

MWCT, in conjunction with the employment of Rangers and Simba Scouts, protects the major predators of our ecosystem in Kuku Group Ranch, through the Wildlife Pays Compensation Programme. In contrast to many other predator compensation programmes, MWCT's initiative is fully sustainable as it is funded by the conservation surcharges that Campi ya Kanzi (our eco-lodge partner) leverages through tourism. This is a form of Payment for Ecosystem Services (PES) and it does not rely on institutional or philanthropic funding.

Through a rigorous multi-layer system of verification and dedicated officers, Wildlife Pays is able to detect and prevent possible cases of fraud that might undermine the programme. Payments are made quarterly and compensation is based on four types of livestock losses to ensure the Maasai pastoralists utilize good husbandry practices to prevent greater or further losses. Community outreaches and meetings are also an integral part of our predator protection strategy. Rangers, along with prominent community figures and MWCT staff, conduct meetings with communities that are feeling increased pressure of predation, as well as with the young Maasai warriors (Morans), to prevent the groups from any lion killing in retaliation to livestock losses.

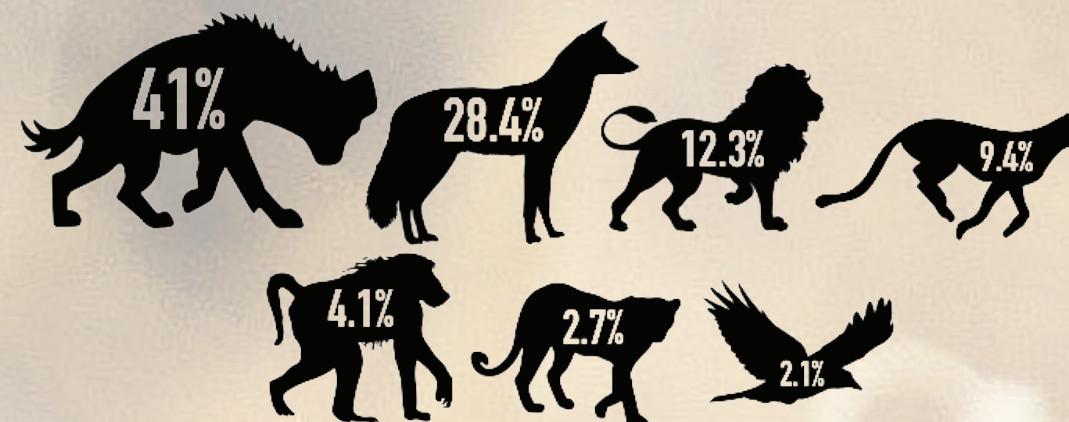
3RD QUARTER

For annual comparison purposes, this total of **415** claims is down from the 450 claims recorded during the Q3 of 2018. The Ittilal Wildlife Pays zone accounted for the highest number of incidents at 135 of the **approved 415**, equivalent to 32% of the total losses, while Enkii (3/1%) and Oltiasika (9/2%) zones had the least number of incidents.



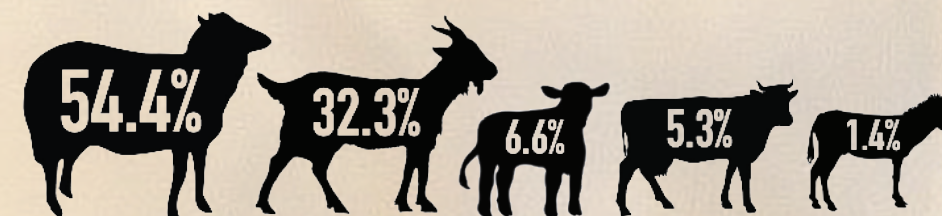
PREDATORS / WILDLIFE SPECIES

The most livestock taken in relation to predators were due to Hyena (170) followed by Jackal (118), Lion (51), Cheetah (39), Baboon (17), Leopard (11), and Predatory Bird (9). Specific percentages for the amount accounted for from each predator are reflected in the info graphic below.



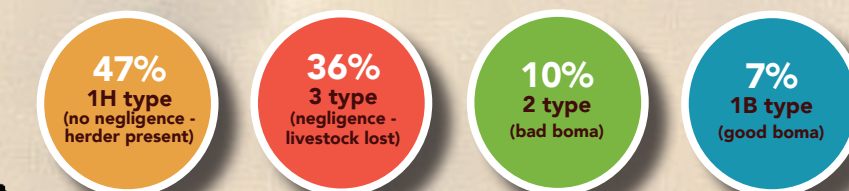
HEADS OF LIVESTOCK

A total of **623** heads of livestock were killed this quarter. The majority of livestock killed by predators were sheep (339/54.4%), followed by the other livestock species seen in the info graphic below.



CLAIMS & LOSS TYPES

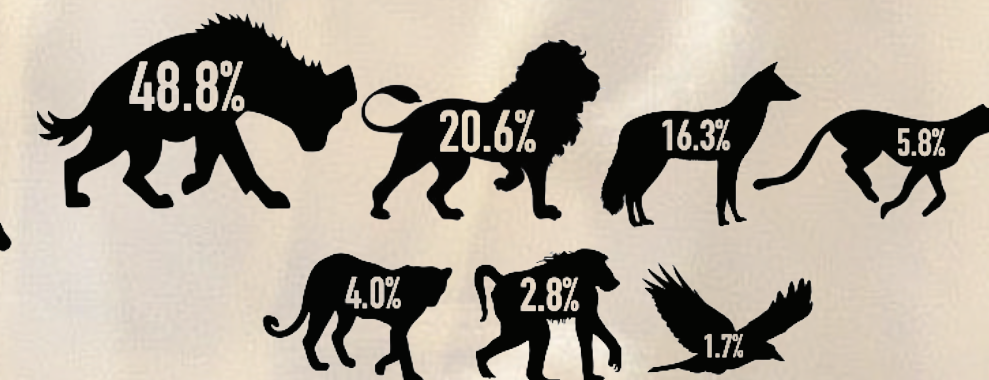
The total pay-out of claims was **2,225,100 Ksh** (USD 21,432), which is higher than the amount paid in Q3 2018 (1,787,700 Ksh) (USD 17,724).



Loss type 1H - the livestock was killed while a herder was present.
Loss type 1B - the livestock was in the boma when the predator attacked and the boma is well constructed and maintained.
Loss type 2 - Livestock was in the boma when the predator attacked but the boma was not of sufficient quality to protect the livestock within from predators.
Loss type 3 - the livestock was lost when the predator attacked no herder was present.

Claims with loss type 1H or 1B receive the highest level of compensation. Loss type 2 claims have the second highest level of compensation and loss type 3 has the lowest level of compensation.

PREDATOR PAY-OUT VALUE PERCENTAGES



MEETINGS & COLLABORATIONS

REDD+ CARBON PROJECT

LIVELIHOODS PROGRAMME

LAND USE MANAGEMENT PLAN MEETING

SEPT 17 - Held at Kilaguni Serena Lodge & 10 zones
Attended by Kuku A Chairman - Korduni Metui, Kuku A Treasurer - Kitipai Mpete, Kuku A Secretary - Mpapa Ketukei, Kuku B Chairman - Solomon Kahenja, Kuku B Treasurer, Melton Melita, Kuku B Secretary - Jacob Kashir, Chief Peter Laitakweni, Chief Nkabani Ngirrandu, Chief Joseph Mbatai, MWCT Chairman - Samson Parashina, MWCT Finance Director - Titus Muia, Livelihoods Coordinator - Lanoi Meitiekini, REDD+ Coordinator - Sakimba Lenaiya, Religious Leaders and Community members.

The meeting was held to discuss and formalize the new Land Use Management Plan (LUMP) document. Within each of the 10 zone meetings, all were attended by Kuku Group Ranch (KGR) Officials, Chiefs and 60 local members of the community. The LUMP was received and validated by the community members and all KGR Officials signed it at Kilaguni.



Community and Leaders meeting at Kilaguni Serena Lodge signing the new LUMP document.



CORPORATE SALE

GUCCI GOES CARBON NEUTRAL
One of the world's leading luxury fashion brands chose to invest in the Chyulu Hills REDD+ Carbon Project and purchased 350,000 carbon credits. As a part of Gucci's 10-year sustainability strategy (2015-2025).

KENYA WILDLIFE SERVICE MEETING

SEPT 21 - HELD AT KWS HQ TSAVO NP
Attended by Luca Belpietro, Christopher Tuite, Muterian Ntanin, Kenneth Ochieng, Juma Bakari Kigwe, David Okul, Andrey Arutyunyan and Carole Mercier.

The meeting was held to discuss further ranger training, the newest sale of carbon credits, the next verification procedures and the potential solutions to address the pressing issues of wildfires on the eastern side of the Chyulus. A new REDD+ factsheet was also distributed.



Luca, Muterian and Chris at the KWS HQ in Tsavo.

MWCT supports **13 Maasai Women's Groups** to explore other income generating activities. While widespread illiteracy poses a challenge, MWCT pursues creative ways to build financial understanding and grow the capacity of the Maasai – especially women – to run profitable enterprises.

RESTORATION PROJECTS *Moilo Grass Seed Bank*

- 10 Women members
- 10 Acre project area
- 90% Project area fully restored
- 20 Hay bales harvested & sold
- 250 kgs grass seed sold

Bee Keeping:
The women recieved 15 beehives from our partners Elephants & Bees (Save the Elephants) as a natural fence to protect their plot and mitigate potential human wildlife conflict.

Inkisanjani Grass Seed Bank

- 16 Women members
- 10 Acre project area
- 1.5 x 1.2m fenced
- 250 kgs grass seed sold

Bee Keeping:
The women were trained on bee keeping skills and hive maintenance for future installation of a new bee fence.

Enkii Grass Seed Bank

- 20 Women members
- 10 Acre project area
- 85% Project area fully restored
- 30 kgs grass seed sold

Bee Keeping:
The women recieved 3 additional beehives from Elephants & Bees (Save the Elephants).

Students march through Iltital village during Anti-FGM ARP.



ANTI - FGM/C *Anti Female Genital Mutilation/Cutting*

AUG 24 - Alternative Rite of Passage (ARP)
Workshop topics included:
- Negative physical effects of FGM
- Children Rights 2011 Act
- Personal hygiene and sanitation
- Family planning
- HIV and STD/Is
- Menstruation

- **800** students were trained and participated in the ARP
- All students were blessed by the elders without the tradition of FGM.
- The entire community celebrated and expressed their support towards the ARP with speeches by local leaders, age set elders, religious leaders, group ranch officials and local stakeholders such as Amref Kenya.
- MWCT played an essential role in arranging the final ceremony, workshops and provided the food for all the attendees.

To ensure that the community benefits from our Health Programme, MWCT employs health staff, runs and supports several dispensaries and supplies medical equipment and essential drugs to the community.

↑71%
Q2 2019

7
Outreaches

↑9%
Q2 2019

5,194
Patients

↓7%
Q2 2019

873
Lab tests

↓6%
Q2 2019

347
Family planning

↑20%
Q2 2019

294
Ante Natal Clinic

↑28%
Q2 2019

57
Hospital births

↑100%
Q2 2019

1,162
Patients recieved mother and child health services.

↑100%
Q2 2019

4
Schools were visited for an Anti - Teenage Pregnancy Campaign.

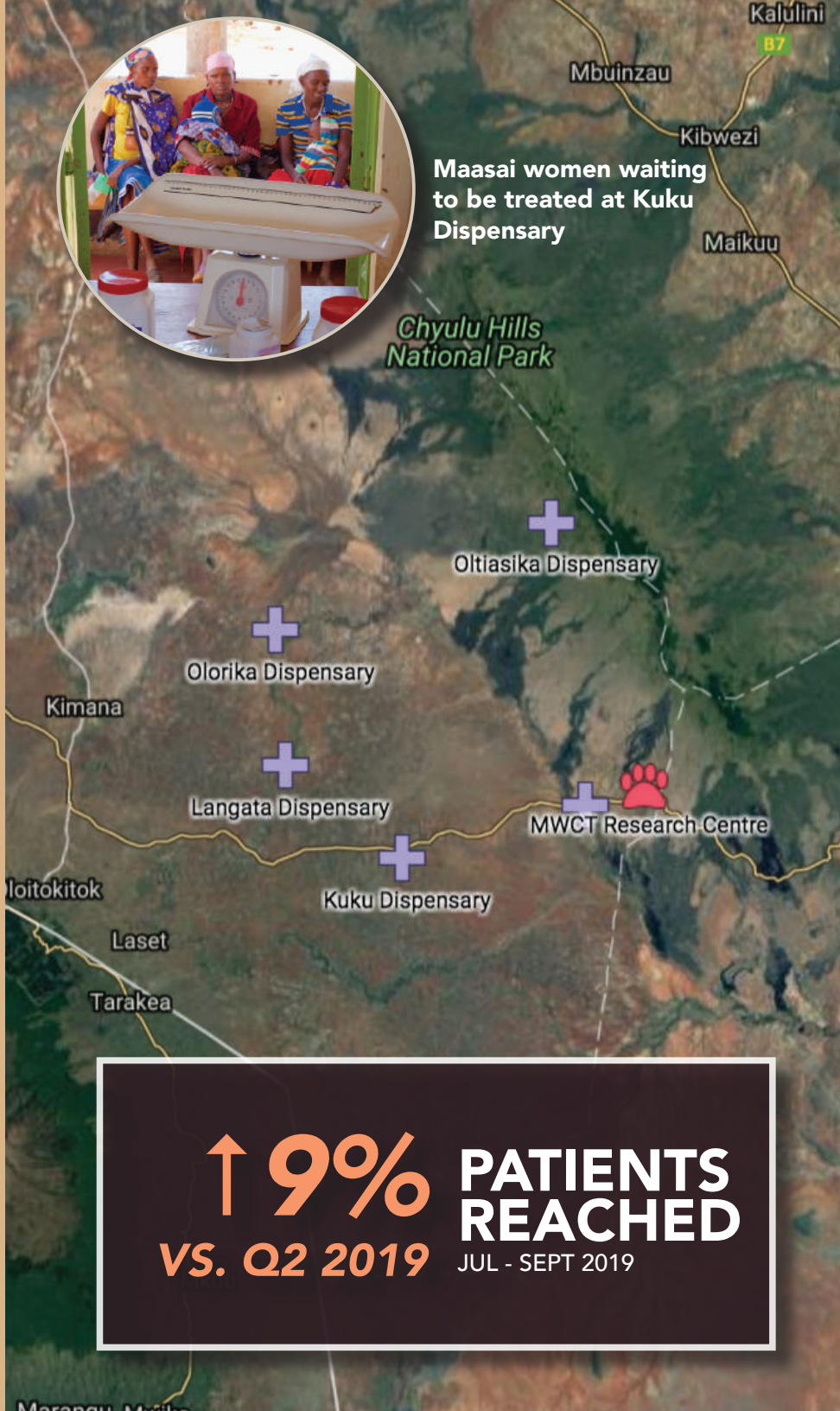
633 boys & girls
attended health talks and workshops during the Alternative Rite of Passage Ceremony on Aug 24th where students transitioned into adulthood without the tradition of FGM/C.



Felix Nandwa
(MWCT Lab technician)



Maasai women waiting
to be treated at Kuku
Dispensary



↑9%
VS. Q2 2019

PATIENTS
REACHED
JUL - SEPT 2019

HEALTH PROGRAMME





25
Schools supported



61
Teachers employed



13
Support staff



9,161
Students enrolled
53% Boys **47%** Girls



64
Scholarships
22
Active



284
Bursaries
54
Active

ACHIEVEMENTS

MWCT sponsored an ANTI-FGM/C Alternative Rite of Passage Ceremony bringing nearly 800 students together to be blessed by their elders as they transition into adulthood without FGM/C. MWCT also sponsored a soccer match and health training classes throughout the schools.

Iltilal Kanzi primary school continues to have the highest enrolment of pupils, which stands at **1,218** with Inkisanjani and Elangata Enkima following closely with enrolments of **916** and **884** respectively.

We continue to meet all the operational costs of Iltilal Kanzi Primary School, which includes but not limited to employment of **13** teachers, supply of school stationery, provision of tapped water, provision of solar power etc.

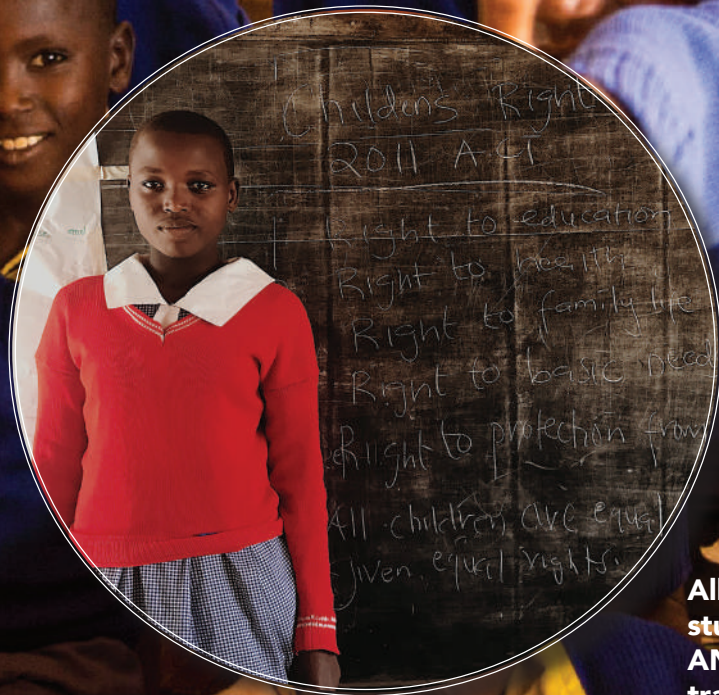
CHALLENGES

Some schools in Kuku Group Ranch such as Inkisanjani, Iltilal and Elangata do not have adequate classrooms to cater for their high enrolments. They are also experiencing shortage of teachers.

ENROLLMENT

	School Name	Boys	Girls	Total
1	Iltilal Secondary School	37	39	76
2	Enkii Boys Secondary I	420	0	420
3	Oyarata Primary School	139	131	270
4	Nolasiti Primary School	139	179	338
5	Neiti Nursery School	42	32	74
6	Marlal Primary School	226	176	402
7	Enkii Primary School	228	270	498
8	Shokut Primary School	179	138	337
9	Enkolili Primary School	166	145	331
10	Leinkati Primary School	72	74	146
11	Elangata Enkima Primary	462	422	884
12	Olorika Primary School	339	315	654
13	Oltiasika Primary School	164	150	314
14	Inkisanjani Primary School	455	451	916
15	Olkaria Primary School	350	290	640
16	Kuku Primary School	152	206	358
17	Enkusero Primary School	108	143	251
18	Moilo Primary School	115	93	208
19	Iltilal Primary School	629	589	1,218
20	Loosoitok Primary School	102	99	201
21	Kaitoriori Nursery School	34	24	58
22	Samai Primary School	169	180	349
23	Oltonyo Lenkai Nursery	30	17	47
24	Manyata Nursery	53	50	103
25	Esoit Nursery	30	58	88

Total	4,870	4,291	9,161
--------------	--------------	--------------	--------------



All photos depict students during the ANTI-FGM Health training and ceremony.

EDUCATION PROGRAMME

PARTNERS & SUPPORT



THANK YOU - ASANTE SANA

We are grateful for the continuous support that we receive from our donors and partnered organizations that aid us in achieving our goals.



MAASAI WILDERNESS CONSERVATION TRUST

WORKING WITH THE COMMUNITY FOR THE PROTECTION AND
PRESERVATION OF CULTURAL HERITAGE, THRIVING WILDLIFE
AND A VITAL ECOSYSTEM.

SINCE 1996

MAASAIWILDERNESS.ORG