

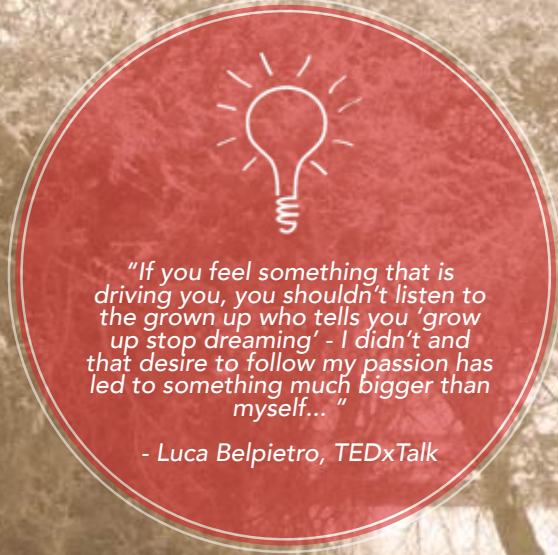
MAASAI WILDERNESS CONSERVATION TRUST



IMPACT
REPORT

20
17





FOUNDER'S MESSAGE

It is very hard to summarize a full year in few lines. We think 2017 was a remarkable year in terms of how MWCT positively reacted to very tough challenges, and not just the Trust and its amazing employees, but the whole Maasai community. It was a year of droughts, which caused mortality in livestock, an unbearable pressure on the grasslands, with emotional and economical losses for the Maasai community. Yet the Maasai were able to not just maintain their tolerance versus wildlife, but even increased it.

Lions have predated more on livestock in 2017 than the previous year: more lions and more livestock and lack of dispersed wildlife (which moved toward the protected grasslands of our conservancies) caused this. Yet no lions were killed.

The drought caused elephants to suffer and when a mother was separated by her baby during an incursion in a cultivated area, a young Maasai man, father of 3, was killed. The community accepted the incident without asking for the killing of the elephant mother, who acted on the maternal instinct of protecting her baby. We are most impressed by such an expression of wisdom by the Maasai community and by the incredible tolerance toward their wildlife.

On a very positive note, 2017 was a historic year for our REDD+ Carbon Project: we had our first carbon credits sale, to Tiffany&Co. This amazing Payment for Ecosystem Services is now rolling and we look forward to invest the proceeds of the sale to protect the magical cloud forest of the Chyulu Hills and the 1,000,000 acres project area. While you read this you should consider to become carbon neutral and purchase our carbon credits! Every single one sold translates into more protection for our ecosystem. Contact us if you wish to look after the planet and offset your carbon emissions.

Nearly 300 amazing women and men dedicated their energies with passion and commitment toward implementing MWCT programs. You will read of their amazing performances and achievements in the following pages. We are proud to be working with and for them and our praises go to each member of this amazing team.

We look at 2018 with confidence, hoping to secure funds to assist the community in developing a Land Use Plan with a vigorous Grazing Plan, so that grasslands can be protected to sustain a bigger number of wildlife and a better quality livestock.

*We thank all of our supporters and the whole amazing team of MWCT women and men,
Antonella, Samson and Luca*

TABLE OF CONTENTS

CONSERVATION

Wildlife Security & Habitat Protection
Ranger Patrol
Incidents & Conflict

Wildlife Monitoring
Species Sighting
Lion Monitoring
Simba Scouts
Camera Trap Results

Predator Protection
Wildlife Pays

Aerial Count
Collaborations & Events
Chyulu Hills REDD+ Carbon Project

HEALTH

Outreaches
Immunization
Reproductive Health
ECG
Susan Komen
Public Health

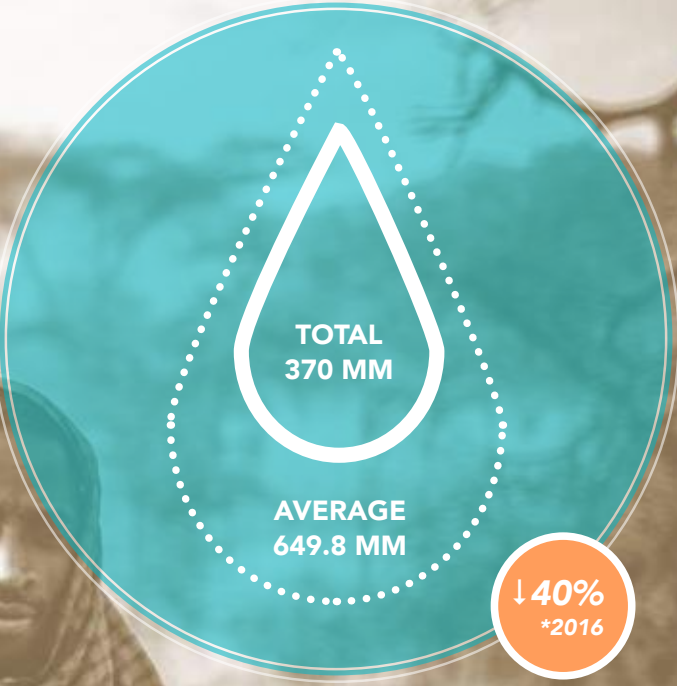
LIVELIHOODS

Moilo Grass Seed Bank
Luci Lights/Ornaments/FGM

EDUCATION

Key Notes
Challenges

FINANCIALS
PARTNERS & SUPPORT



RAINFALL

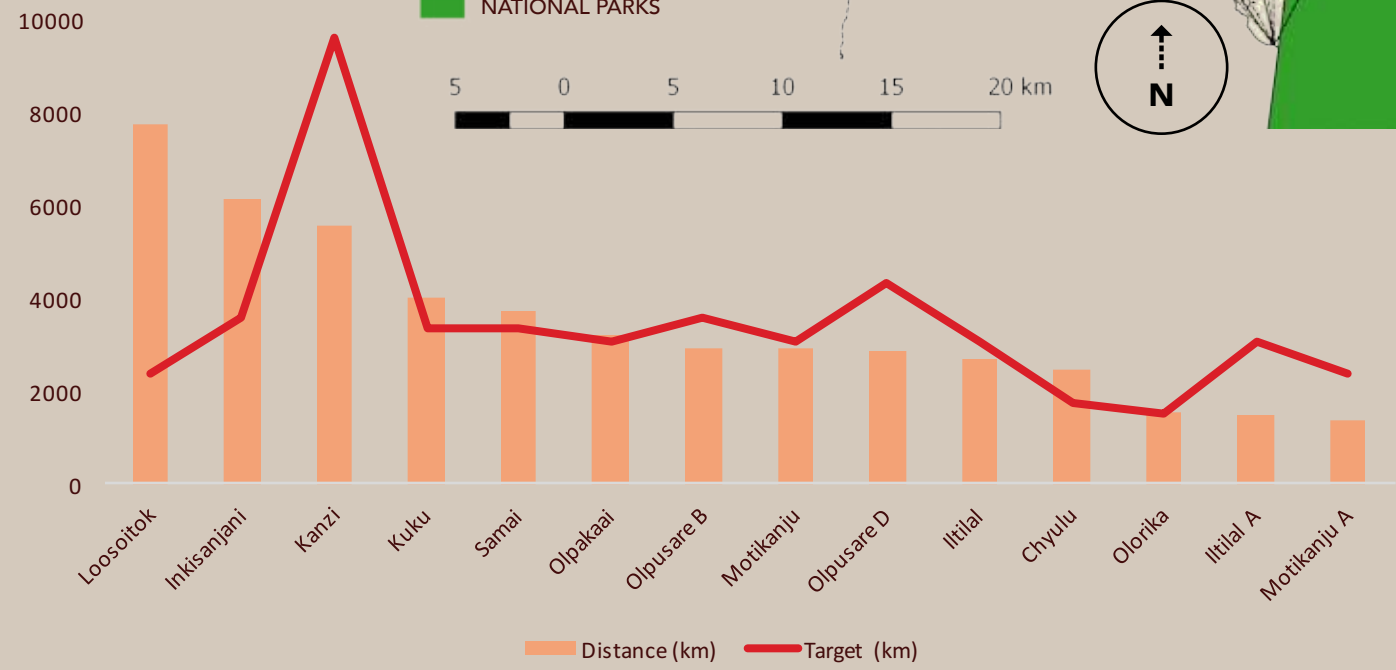
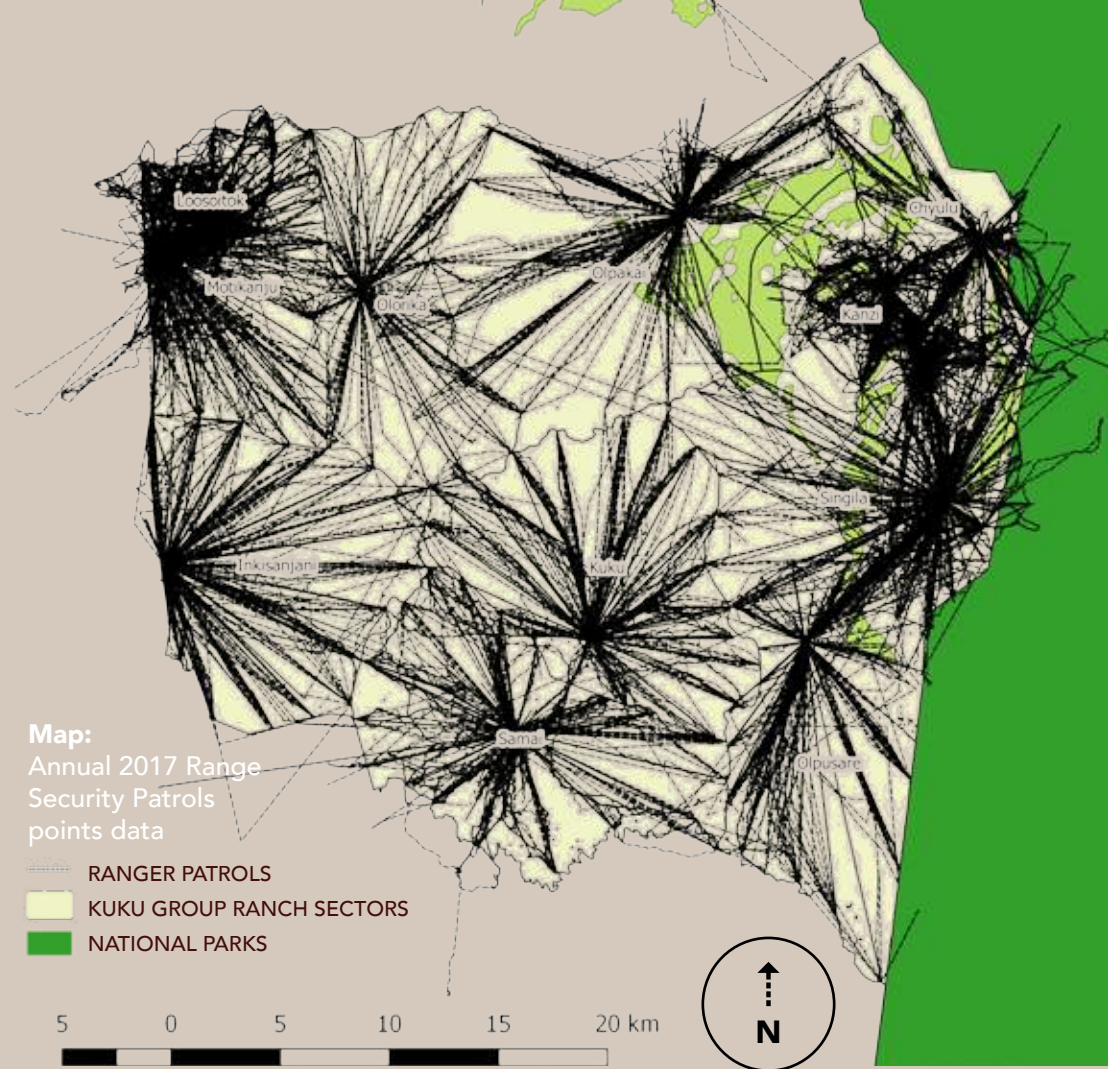
**PASSIONATELY WORKING TO
PROVE THAT NURTURING WILDLIFE
AND THEIR ECOSYSTEM BENEFITS
THE LOCAL COMMUNITY
AS A WHOLE**

**MWCT NATURE
WORKS**

WILDLIFE & HABITAT PROTECTION

RANGER PATROL

- 123** Rangers
- 14** Sectors
- 81** Dedicated to Kuku Group Ranch
- 283K** Acres Protected
- 48** Rangers trained in bush craft in-house & KWS (Kenya Wildlife Service) Manyani Law Enforcement Academy
- SMART & Cybertracker** Data Collection Trained
- 6-8** Rangers per sectors
- 45,907** Total kilometers covered on foot **↑6% *2016**
- 4,592** Anti-Poaching patrols **↑31% *2016**



Graph: Annual 2017 Sector Ranger Patrols distances vs targets. Targets differ depending on sector size.

Certain rangers stations were only dissolved mid 2017 (Iltilal A, Motikanju A & Kanzi), Olorika sector was formed during the mid of the year due to elephants crop riding in the area. Thus the distances for these sectors are lower than expected for an annual analysis.

12,000 ACRES HIGH VALUE CONSERVANCIES PROTECTED:

MOTIKANJU + KANZI
FOREST, GRASSLAND & CRITICAL WILDLIFE CORRIDOR

**NO GRAZING
NO POACHING
HIGH LAW ENFORCEMENT
PROTECTED BY 25 RANGERS**

1,398
ANTI-POACHING PATROLS

17,598
TOTAL KM FOOT PATROL OF AREAS
↑23% *2016



WILDLIFE & HABITAT PROTECTION INCIDENTS & CONFLICTS

- 4** LION HUNTS PREVENTED ↓33% *2016
- 0** SNARES REMOVED ↓60% *2016
- 5** POACHING INCIDENTS
 - 1 Buffalo
 - 2 Zebra
 - 1 Giraffe
 - 2 Lesser Kudu
- 8** JOINT PATROLS
 - KWS (Kenya Wildlife Service)
 - BLF (Big Life Foundation)

- 13** SUSPECTS ARRESTED
- Items recovered
- 1 Panga
 - 1 Spade
 - 1 Vehicle
 - 2 Motorbike
 - 1 Hacksaw
 - 2 Machetes

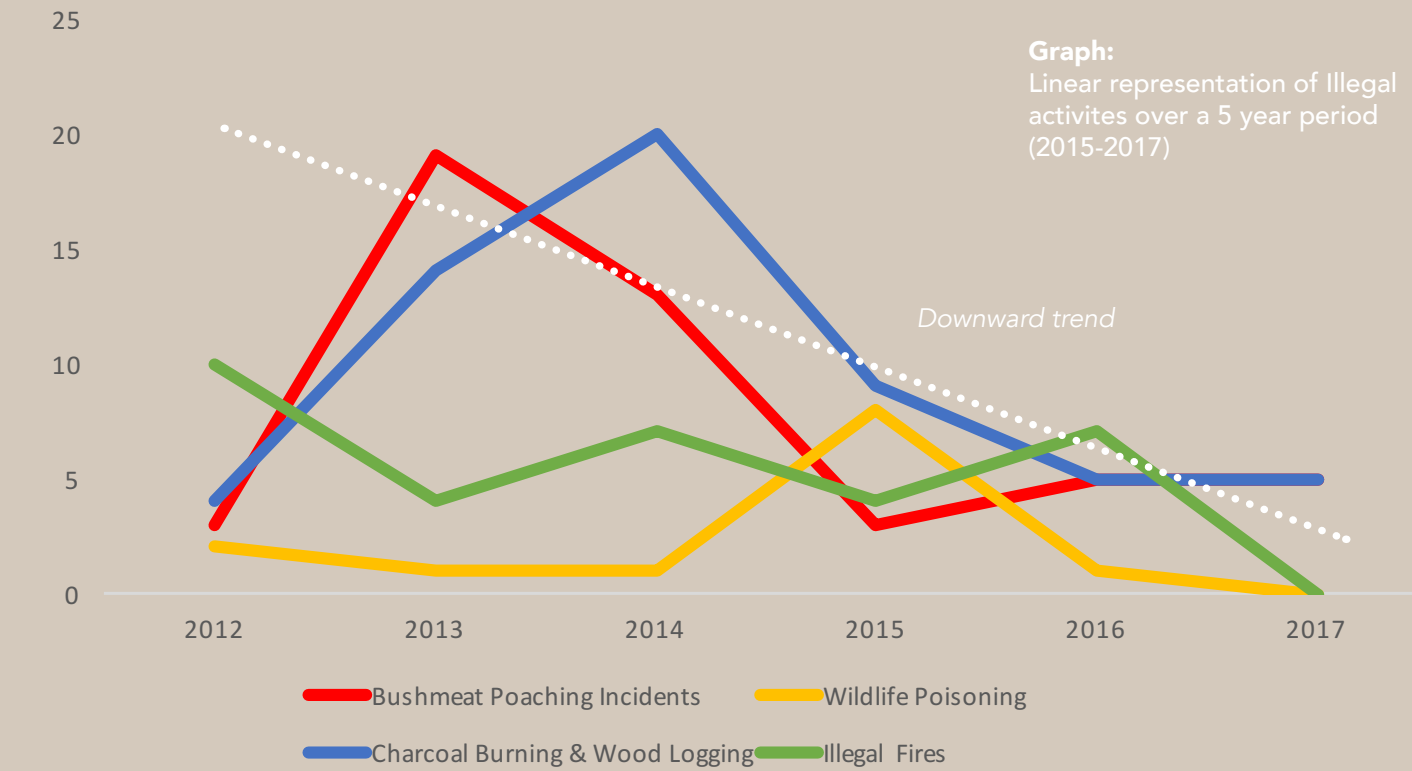
- 5** BUSHMEAT POACHING ↓74% *2013
- 0** WILDLIFE POISONING ↓80% *2015
- 5** CHARCOAL BURNING & WOOD LOGGING ↓75% *2014
- 0** ILLEGAL FIRES ↓70% *2016

STORY SPOTLIGHT

June 11th
Elephant Mortality
 Samai Village
 Herd of 5-7 Elephants searching for water
 1 human fatality



MWCT team successfully convinced **no spearing by the community**, our team searched for the elephant for 3 days, assisted in burial arrangements for affected family



KEY NOTES

Feb 18th
 Sandalwood Harvesting
 Inkisanjani Area
 Culprit arrested

Jul 22nd
 *Lion Spearing
 Kuku Area - Livestock predation
 Maasai Warrior injured & treated
 Investigated & found to be self defense

Dec 12th
 Injured Elephant
 Motikanju area
 Joint Patrol with BLF
 Elephant treated but succumbed to its wounds 4 hours after treatment
 Tusks recovered to Amboseli

Apr 1st
 Elephant Mortality
 Joint patrol with KWS
 Tusks intact

Dec 3rd
 Lion Hunt
 Iltilal Area - Livestock predation
 Maasai warrior injured & treated
 Retaliation prevented

Dec 28th
 Sandalwood Harvesting
 Lava Chyulu National Park
 6 hr stake out operation
 Culprit arrested

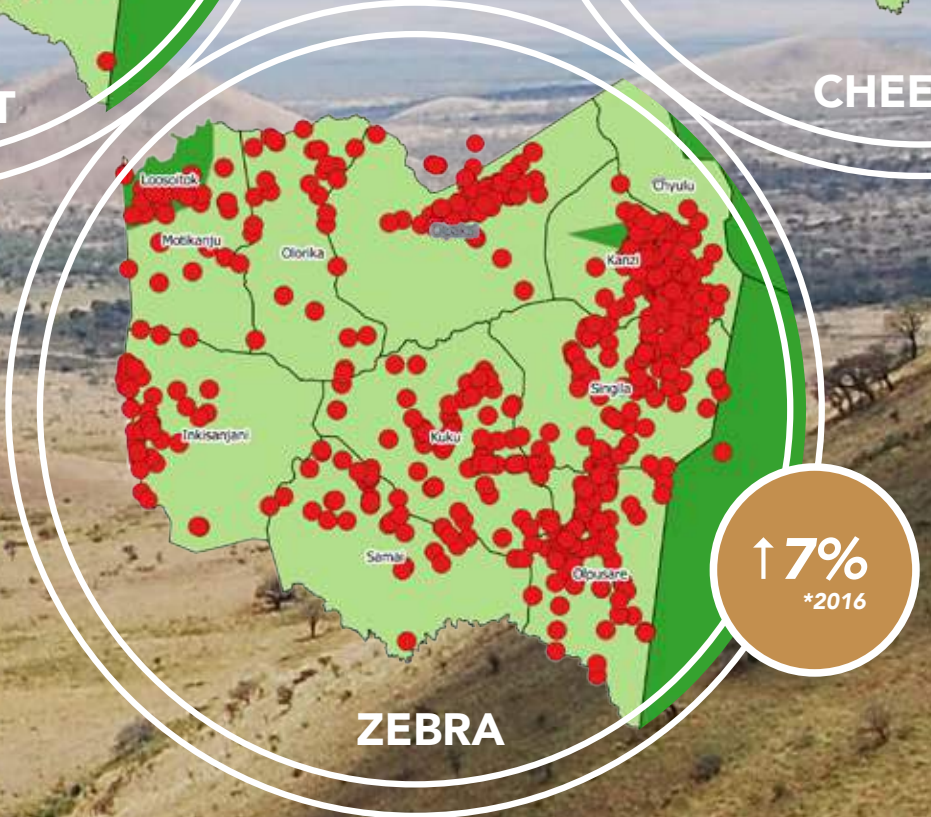
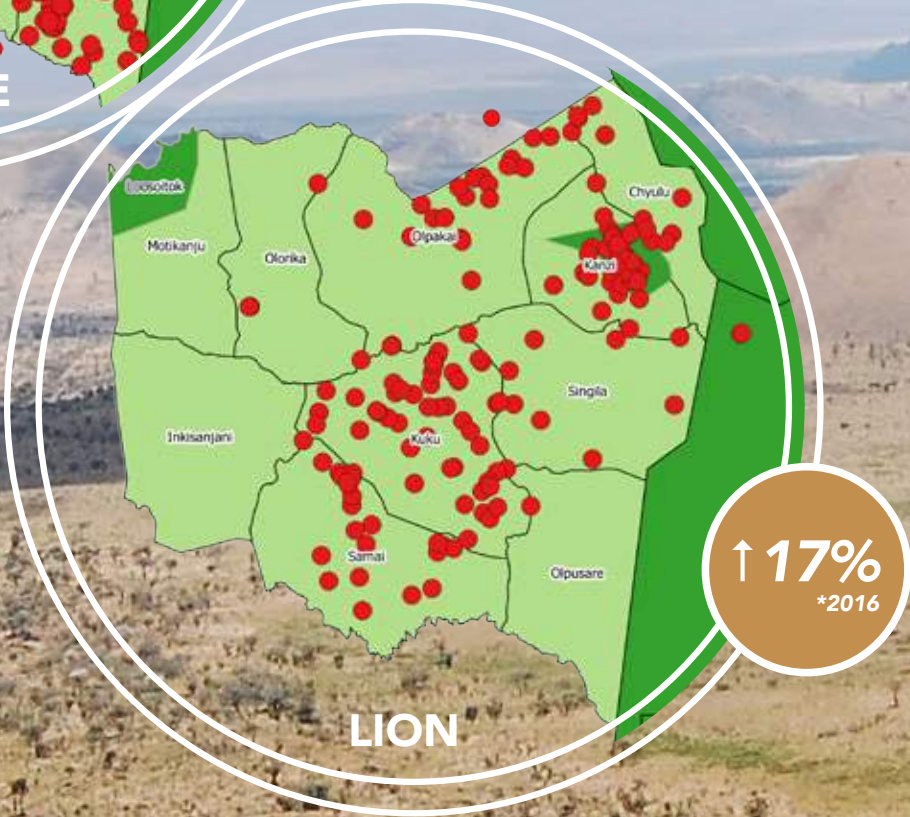
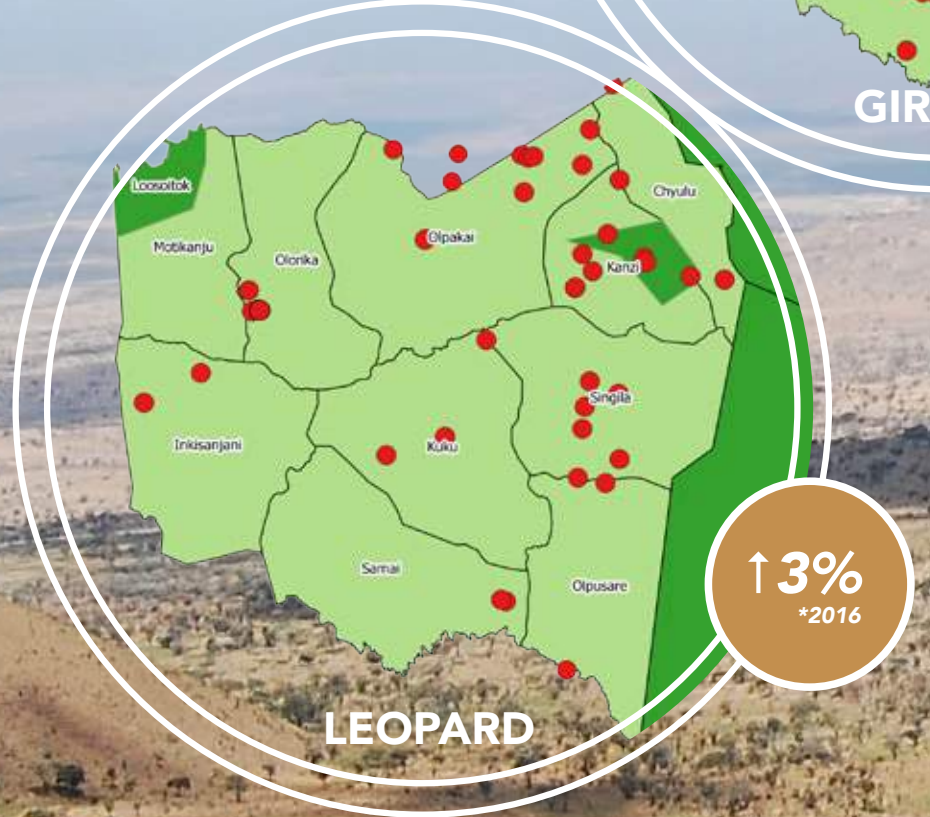
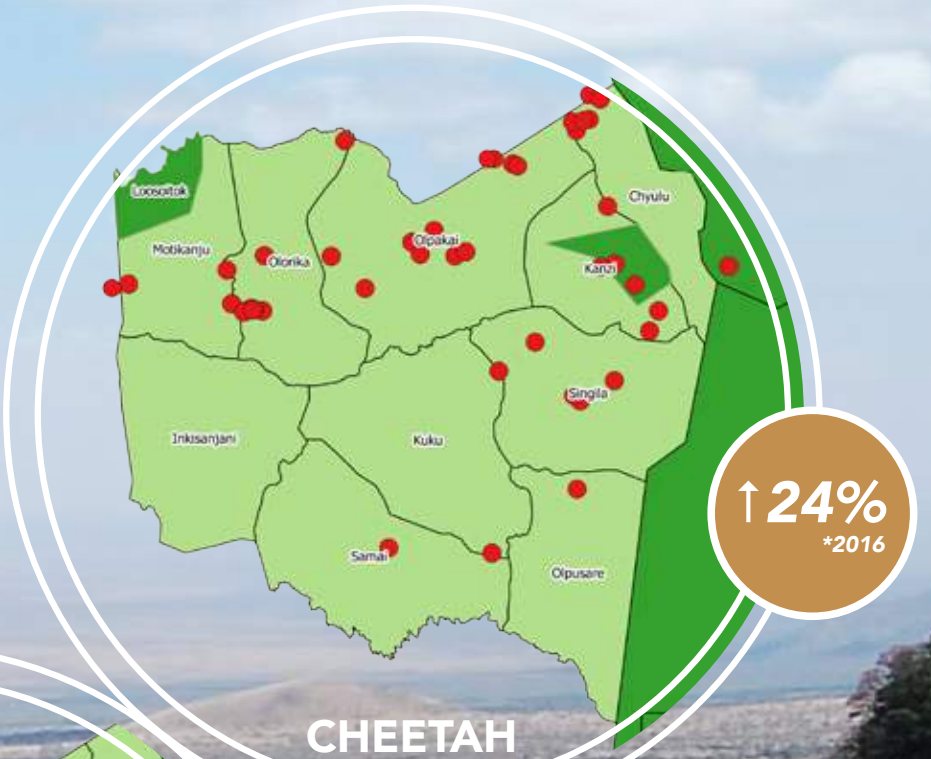
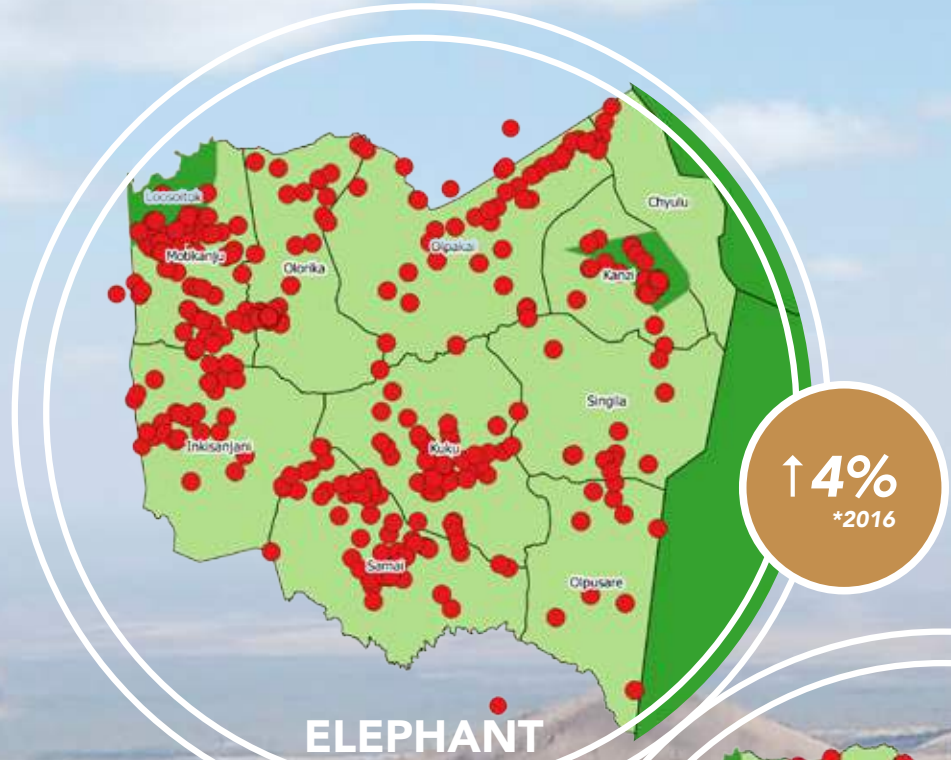
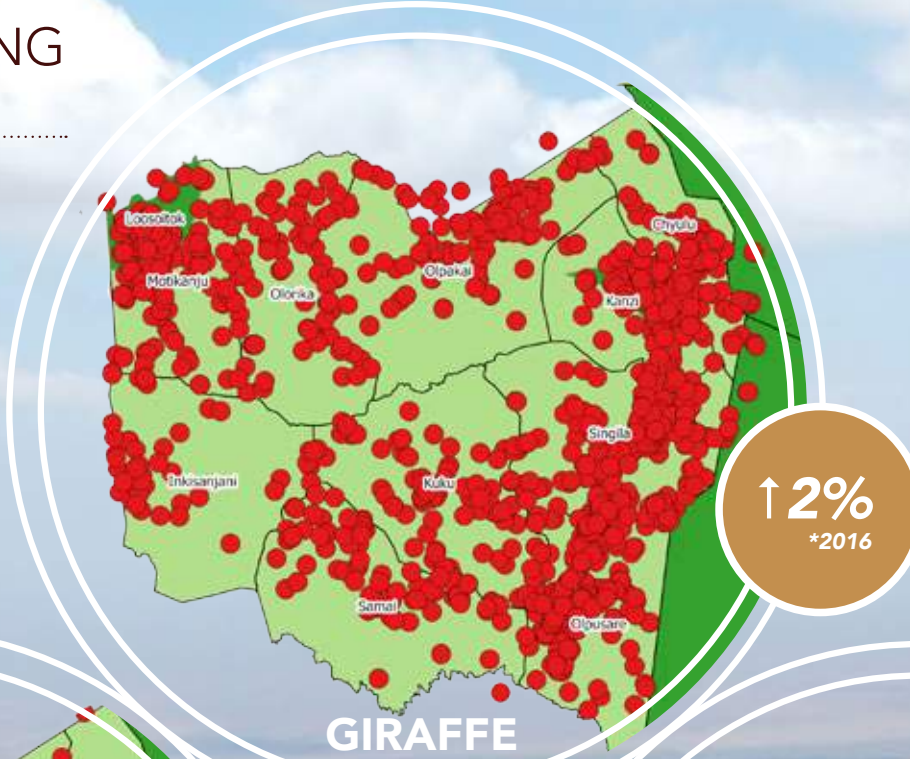
*MWCT collared lion Normani pride

WILDLIFE MONITORING

WILDLIFE SIGHTINGS

LEGEND

- SIGHTINGS
- NATIONAL PARKS
- KUKU CONSERVANCIES
- RANGER SECTORS



WILDLIFE MONITORING

LION MONITORING

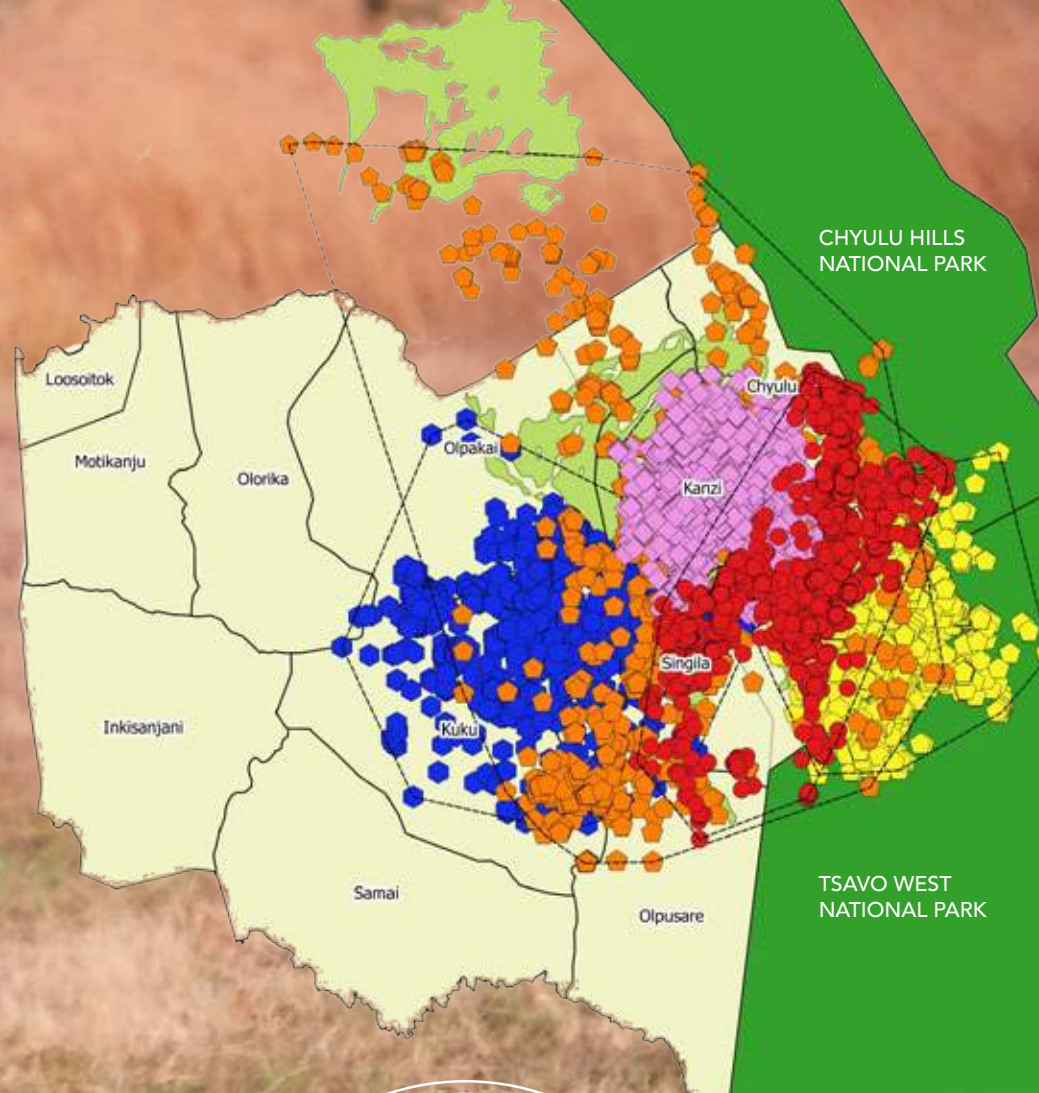
Collaring lions is a critically important step towards mitigating human-wildlife conflict. 5 individual Lions on the Kuku Group Ranch have been collared with GPS/VHF tracking collars and their movement during 2017 is illustrated in the descriptive map. The monitoring enables our team to collect data on population growth rates and habitat utilisation on the Kuku Group Ranch.

LEGEND

- SAT2173 NAMUNYAK
- SAT1934 ORKIRIKOI
- SAT1935 NELUAI
- SAT2174 NESAMBU
- SAT2201 NORMANI
- KUKU GROUP RANCH SECTORS
- NATIONAL PARKS



Map:
Annual 2017
movements of our
5 collared Lions



- LION POINT EVERY 3 HRS
- 10% CORE TERRITORY
- 50% TERRITORY
- 95% TERRITORY
- KUKU GROUP RANCH SECTORS
- NATIONAL PARKS

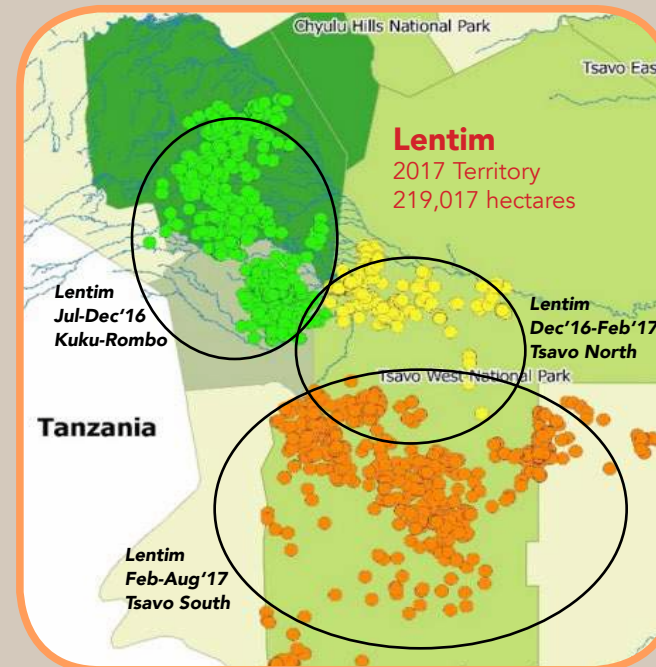
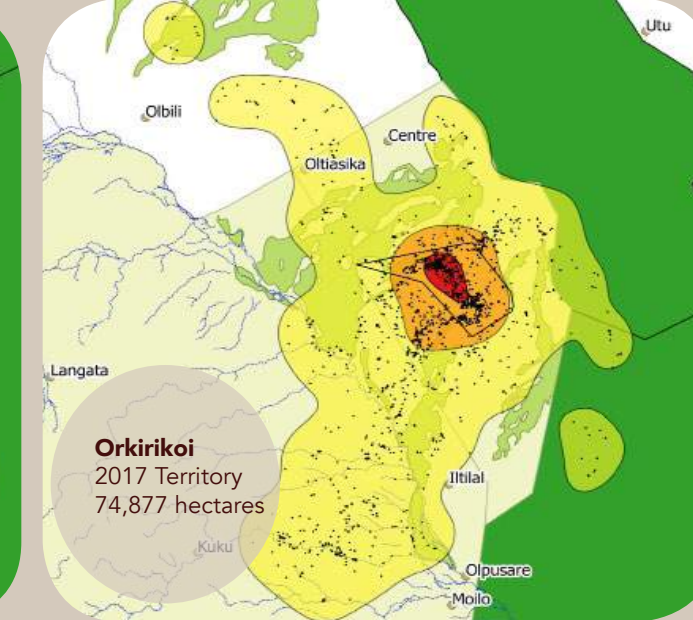
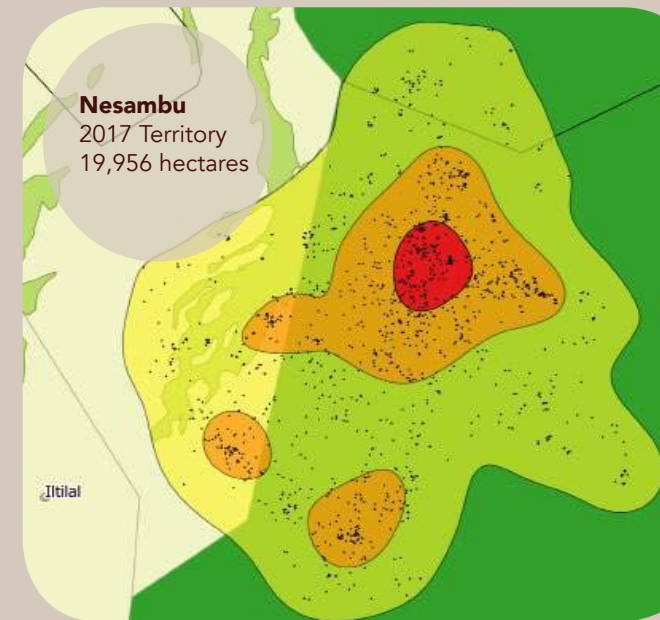
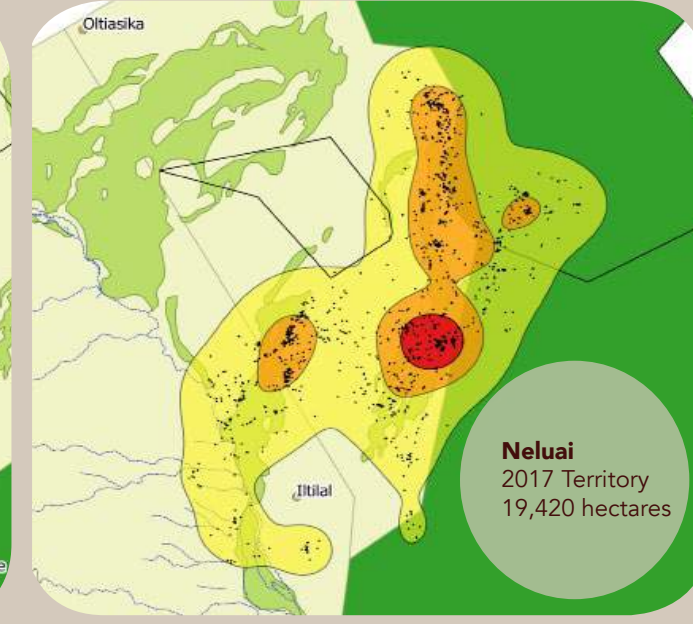
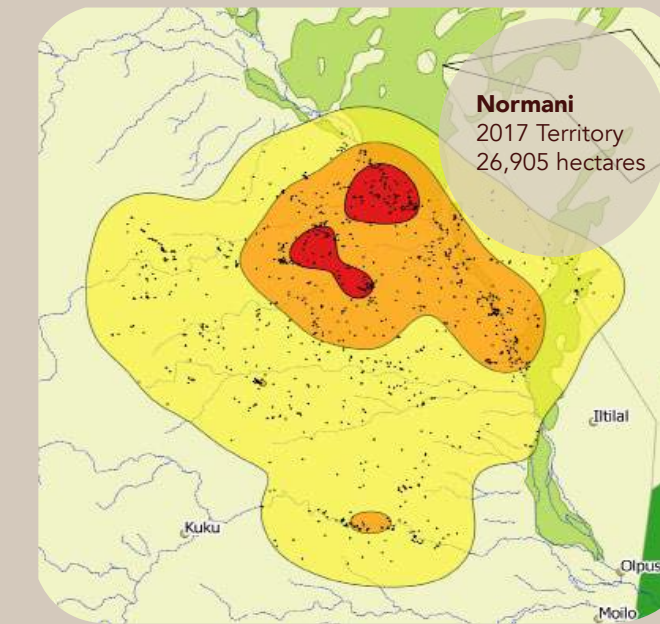
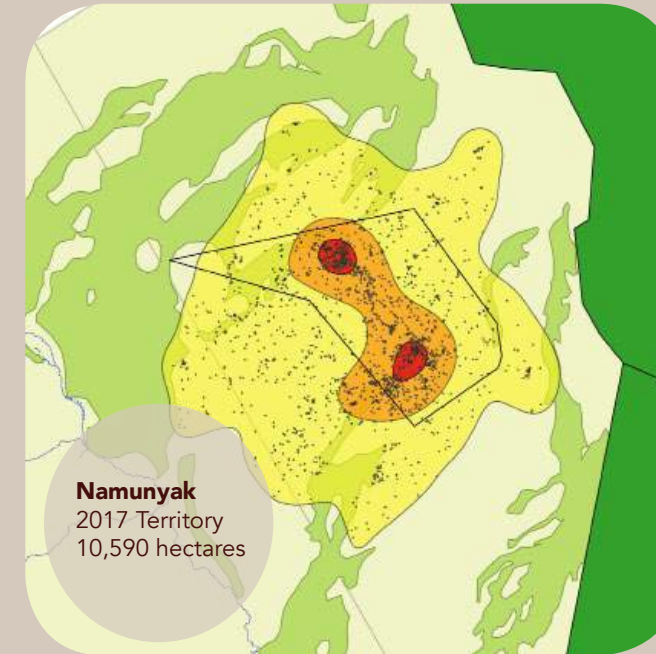


Photo: AUG 2017
De-collaring of Lentim.
Conservation Manager,
Iain Olivier taking
measurements.
(See Spotlight story
for details)



SPOTLIGHT: LENTIM Territory Shift

Collared May 26 2016, Sub-Adult, 3yrs
Formed a young male coalition moving from Rombo and Kuku. Involved in many livestock predation incidents. Overtime expanded his territory into Tsavo West National Park. Became less involved in community livestock predation & shifted eating patterns to wildlife.

De-collared Aug 20 2017
Lentim was able to mature and disperse into Tsavo West National Park so we no longer needed to monitor movements and mitigate against human-wildlife conflict. A dispersal by a lion born into a high conflict community owned group ranch proves that Kuku Group Ranch has seem to shift from the traditional perceived "sink population" to be a part of the source population of lions in the area.



WILDLIFE MONITORING SIMBA SCOUTS

This is a **dedicated team of 14 Maasai warriors** (Moran), who day in and day out monitor GPS collared lions and other wildlife species. 13 Moran gather data & the 14th, Peter Sompol (Chief of Kuku Moran) educates the community on lions within the area and is key in helping persuade against lion hunts. Data collected is analysed and used to gauge various aspects of different wildlife species such as their eating habits. The monitoring is also a very significant measure to mitigating human-wildlife conflict within the local Maasai communities.

LION COLLARING

2nd Quarter

2 Lioness + 1 Male

Nesambu: New
Namunyak: Re-collar
Orkirikoi: Collar adjustment

3rd Quarter

1 Male

Lentim: De-collar

Joint operations with
DSWT (David Sheldrick Wildlife Trust)
KWS (Kenya Wildlife Service)



Photos:
De-collaring of
Lentim+ Teeth
measurement



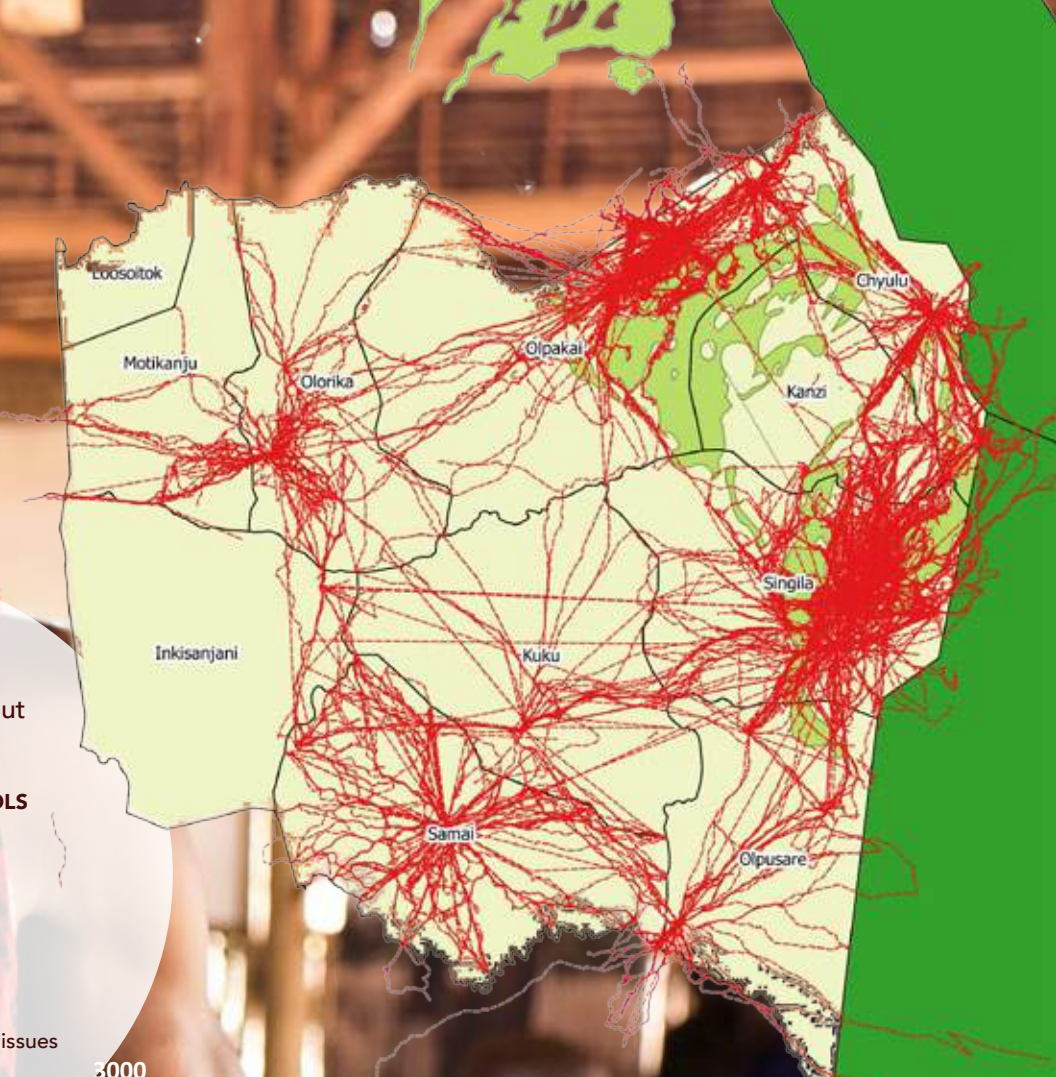
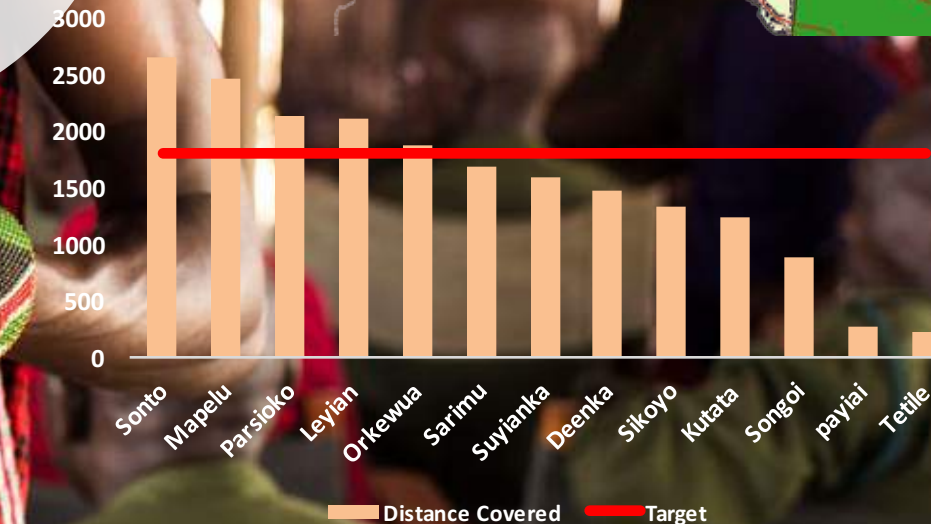
19,830
Simba Scouts
Total kilometers
covered on foot

↑ 10%
*2016

Map:
Annual 2017 Simba Scout
Patrols points data

SIMBA SCOUT PATROLS
KUKU SECTORS
NATIONAL PARKS

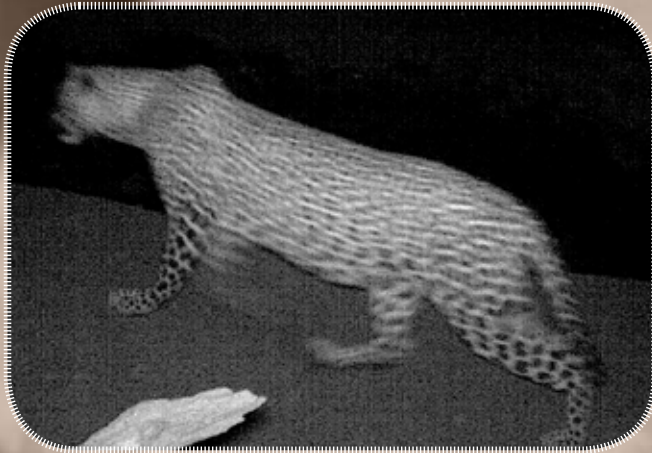
Graph:
Annual 2017 Simba Scout
Patrols distances & targets
*those that did not reach
targets experienced cybertracker issues



WILDLIFE MONITORING

CAMERA TRAP SIGHTINGS

- ✓ GIRAFFE
 - ✓ ELEPHANT
 - ✓ HYENA
Spotted
Striped
 - ✓ WARTHOG
 - ✓ LION
Female
Male
Cubs
 - ✓ LEOPARD
 - ✓ CHEETAH
 - ✓ GAZELLE
Grant's
Thomson's
 - ✓ BABOON
 - ✓ IMPALA
 - ✓ ELAND
 - ✓ HARTEBEEST
 - ✓ WILDEBEEST
- ✓ ZEBRA
 - ✓ BUFFALO
 - ✓ DIK DIK
 - ✓ JACKAL
 - ✓ KUDU
 - ✓ PORCUPINE
 - ✓ SECRETARY BIRD



\$78,912
TOTAL PAY OUT
OF CLAIMS FOR
2017

1,671
INCIDENTS

4.5
AVERAGE NUMBER
OF INCIDENTS
PER DAY IN 2017

16,285
YEARLY KMS
TRAVELLED PER
VERIFICATION
OFFICER

PREDATOR PROTECTION WILDLIFE PAYS COMPENSATION PROGRAM

PES (PAYMENT FOR ECOSYSTEM SERVICES)
Protecting the major predators of our ecosystem in Kuku Group Ranch

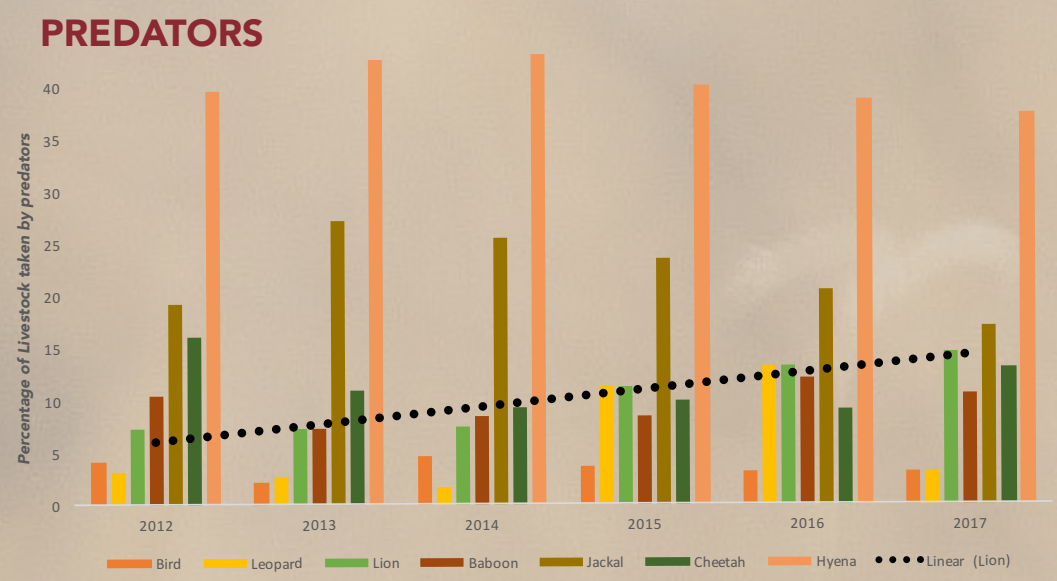
FULLY SUSTAINABLE
FUNDED BY CONSERVATION SURCHARGES THROUGH
ECOLOGDE PARTNER, CAMPI YA KANZI

- THE PROCESS**
- Multi-layer system of Verification and 5 dedicated Officers
 - Detects and prevents fraud that might undermine the program
 - Payments made quarterly
 - Compensation is based on 4 types of livestock losses
 - Ensures Maasai pastoralists utilize good husbandry practices
 - Prevent greater or further losses

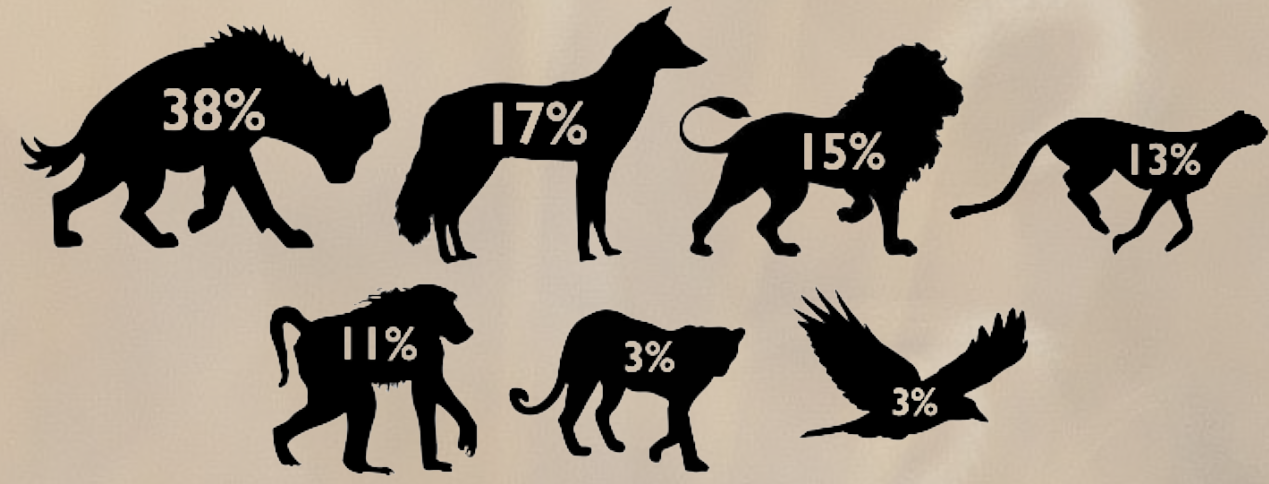
COMMUNITY OUTREACHES
Rangers, prominent community figures and MWCT staff, conduct meetings with communities that are feeling increased pressure of predation, as well as with the young Maasai warriors (Morans), to prevent the groups from any lion killing in retaliation to livestock losses.

During 2017, we observed a marked increase in the number of Wildlife Pays incidents recorded and approved for compensation. The most significant increases in livestock depredations were most evident in the last two quarters of the year and can be attributed to drought conditions and an **influx of livestock** from areas outside of Kuku GR. This, coupled with the **increasing lion population** in Kuku, led to these raised levels of depredation. Even more positive to note is that with the increase lion population, and increased incidents, the number of "no negligence" claims, (implying good husbandry), exceed the number of negligent claims. A truly positive sign.

Overall perceived trends are depicted in the graph on the right over a 6 year period.



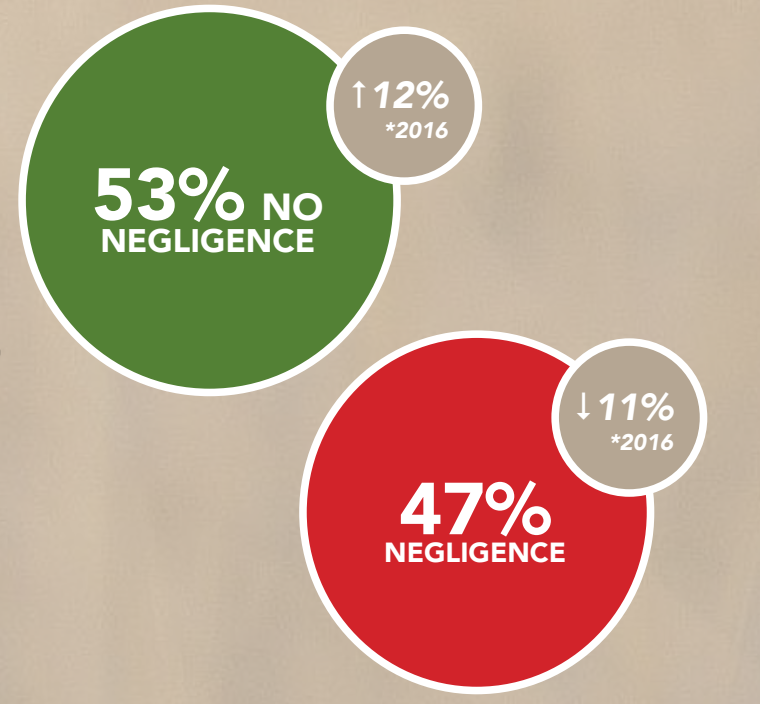
The most livestock taken in relation to predators were due to Hyena. Over the course of 6 years there has also been an increase in incidents by lions, this could be due to the recovering lion population in the area. Data shows that lion sightings have increased by 17% since 2016. This data coupled with a decrease in community retaliations and lion hunts could also be a reason for the increase in incidents by Lions. Specific percentages for the amount accounted for from each predator are reflected in the info graphic below.



HEADS OF LIVESTOCK
A total of 2,240 heads of livestock were killed this year. The majority of livestock killed by predators were sheep followed by the other livestock species seen in the info-graphic below.



CLAIMS
The total pay-out of claims was **7,987,050 Ksh (78,912 USD)**, an increase to the amount paid in 2016 (6,580,700 Ksh / 64,951 USD). However, the number of no-negligence claims still outweigh that of negligence claims.



KUKU AERIAL CENSUS

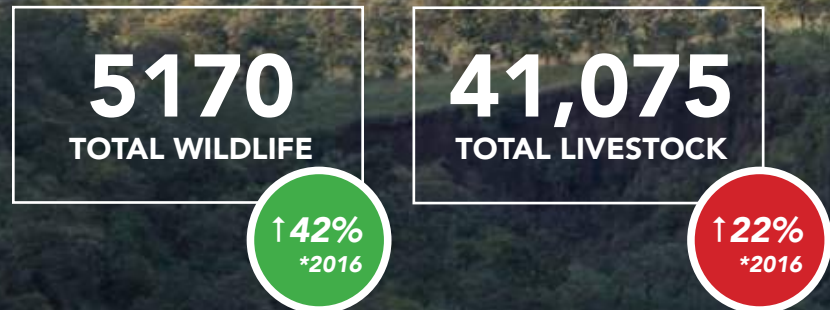
WILDLIFE / LIVESTOCK COUNT

AIM: To understand wildlife and livestock distribution/abundance on Kuku Group Ranch MWCT began aerial surveys in 2010 as part of a long-term ecological monitoring plan for the group ranch, and to inform decision making going forward. We monitor trends and changes over time, which is an important part of being able to develop appropriate conservation management strategies to effectively implement adaptive management.

2017 - MAY 14 (Wet Season) & OCT 30 (Dry Season)

Transects were flown systematically between 2 planes, following a north to south bearing at a height of approximately 500 ft and at a speed of approximately 110 mph with an approximate cumulative 7 hours of flight time. Overall the wildlife population remains stable with both reductions and increases in various species population sizes.

Map:
Combined 2017
Aerial Survey points
of Wildlife & Livestock



WE SAW POSITIVE RESULTS, TWO BEING THE 17% INCREASE IN LION SIGHTINGS AND 24% CHEETAH SIGHTINGS THIS YEAR...

Photos:
May Aerial Count Team (L-R Emmanuel, Lanoi, Michael, Tricia, Muterian, David, Lenayai, Iain, Irene, Luca)
Oct Aerial Count Team (L-R Lenayai, Ishmael, Muterian, Luca, Matthew, Zachary, David, Iain, Julie, Tricia)



COLLABORATIONS & EVENTS

MWCT MEETINGS | NEW YORK CITY MARATHON

KEY MEETINGS

1ST QUARTER

TenBoma & IFAW (International Fund for Animal Welfare)
Field Ops & Leadership training

MWCT Rangers & KWS (Kenya Wildlife Service)
Quarterly meeting

2ND QUARTER

Ministry of Agriculture, Livestock and Fisheries & Washington State University Department of Livestock Workshop
KLWSS (Kenya Livestock & Wildlife Syndrome Surveillance) Training

IUCN (International Union for Conservation of Nature) Nairobi
SMART Training and refreshment

ZSL (Zoological Society of London) & KWS (Kenya Wildlife Service)
Wildlife intelligence and crime incident training

3RD QUARTER

Kenya Wildlife Conservancies Association & KWS HQ
Community Scouts Policy + Manyani Curriculum Review Workshops

KWS Law Enforcement Academy
Leadership & Ranger Training

4TH QUARTER

MWCT & KWS Law Enforcement Academy
Ranger's Graduation from 2 months training - all performed very well

TCS NEW YORK CITY MARATHON

Young Maasai Warriors traditionally go out to hunt lions as an act of displaying their manhood and coming of age. We provide an alternative avenue for young Maasai boys and girls to exercise and showcase their skills, rather than traditional practices. This year we sponsored our **FIRST WOMAN RANGER** to run in the NYC Marathon with several other supporters from all over the world. We surpassed our goal for MWCT and couldn't be more grateful with the amount of support we received throughout the year and during our stay in New York City.

Special thanks to our incredible team of runners for their passion and fundraising efforts, we couldn't do it without you!

Titus Muia (MWCT Finance Director)
Mark Somen (MWCT Board Member)
John Metui (Maasai Warrior)
Julie Gane (MWCT Programs Coordinator)
Ava Jawson (US Supporter)
Ashlee Kuhl (VP Marine Mooring)
Julie Thibodeau (Conservation Lands Foundation)
Joshua Pollinger (TPG Creative)
John O'Sullivan (US Supporter)

JT Archie (US Supporter)
Mary Schroeder (US Supporter)
Claudia Ogoti (MWCT PA)
Dorcus Naisaa Ntete (MWCT Ranger)
Jake Bullock (US Supporter)
Mary McBride (US Supporter)



\$143,636
TOTAL RAISED
for MWCT Programs

QUICK FACTS

- OUR 9TH YEAR
- \$100,000 GOAL
- 15 AMAZING WILD RUNNERS
- FIRST EVER MWCT MAASAI WOMAN RANGER RUNNER
- JOHN METUI (MAASAI RUNNER FINISHED IN 17TH PLACE)
- 3 PRIZES VIA CAMPI YA KANZI
- SPECIAL THANKS TO ED & ANN NORTON FOR THEIR ENDLESS SUPPORT THIS YEAR

#RUNWILD

CHYULU HILLS REDD+ CARBON PROJECT

OUR FIRST SALE

WHAT IS REDD+

The main drivers of forest destruction are economics and poverty. **REDD+** is a mechanism that has been developed through the UN Framework Convention on Climate Change (UNFCCC) to provide economic incentives to protect forest rather than destroy it.

By protecting forests, greenhouse gas emissions are avoided. The international carbon markets recognise that carbon emissions result in real costs and risks to the planet as a result of the damage caused by climate change – droughts, extreme weather, sea level rise, loss of glaciers, ocean acidification, etc.

Payments to REDD+ projects enable individuals, companies and institutions to reduce their net emissions and receive “**carbon credits**” that offset their carbon footprint.

CHYULU HILLS - a critical corridor

The Chyulu Hills sit close to Kenya’s southern border with Tanzania nestled in front of Mount Kilimanjaro, which towers over this iconic African landscape. The hills themselves, like the great mountain, are the result of the violent volcanic history of this region. They gently rise nearly 4000 ft above the surrounding dry plains and savannah, just high enough to capture the clouds and provide conditions for the growth of a lush tropical montane cloud forest along its ridge tops. The landscape (nearly 4000 sq. km) forms a **critical “bridge”**, linking together two of Kenya’s most important wildlife areas, the greater Tsavo Ecosystem and Amboseli Ecosystem.

This area is home to Kenya’s largest surviving population of elephants and one of its foremost large-scale wildlife and wilderness areas. The **Chyulu Hills REDD+ Project** aims to protect the Chyulu Hills landscape, its forests, woodlands, savannahs, wetlands and springs, and its wild populations of Africa’s best known animals - lions, cheetahs, wild dogs, rhinos, elephants, and various antelopes.

CREDIT STANDARDS

- VCS (VERIFIED CARBON STANDARD)
- CCBS (CLIMATE COMMUNITY & BIODIVERSITY STANDARDS)
- HIGHEST **GOLD RATING** DUE TO EXCEPTIONAL BENEFITS TO CLIMATE, COMMUNITY & BIODIVERSITY
- MARKIT REGISTRY

9 STAKEHOLDERS

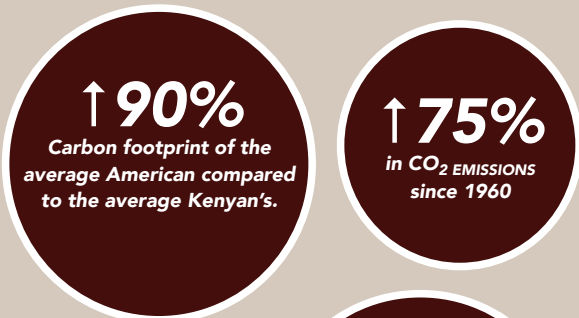
CHYULU HILLS CONSERVATION TRUST

- MBIRIKANI
- KUKU A
- KUKU B
- ROMBO
- KENYA WILDLIFE SERVICES
- KENYA FOREST SERVICES
- MAASAI WILDERNESS CONSERVATION TRUST
- BIG LIFE FOUNDATION
- DAVID SHELDRIK WILDLIFE TRUST

HOW IT WORKS



100% OWNED AND MANAGED BY LOCAL INSTITUTIONS



IMPACTS

1 million ACRES OF LAND PRESERVED

3 NATIONAL PARKS CONSERVED & A VITAL DISPERSAL AREA FOR AMBOSELI NATIONAL PARK

70,000 MAASAI PEOPLE HELPED

 PRESERVING A CRITICAL WATERSHED, FEEDING WATER TO MOMBASA (2ND LARGEST CITY IN KENYA)

 PROTECTING ICONIC & ENDANGERED WILDLIFE

FIRST SALE TO TIFFANY&CO.

“NEW YORK, September 27, 2017 – As part of its commitment to address climate change, Tiffany & Co. today announced that it is purchasing renewable energy credits equivalent to 100% of its U.S. electricity use in 2017. Tiffany & Co.’s remaining 2017 emissions will be balanced through an investment in the Chyulu Hills Conservation Trust’s REDD+ Project. As the first major corporate backer of the project, Tiffany will support landscape scale conservation – protecting endangered and iconic species, and a critical Kenyan watershed – while creating new sustainable economic opportunities for the local communities.” - Tiffany&Co. Press Release

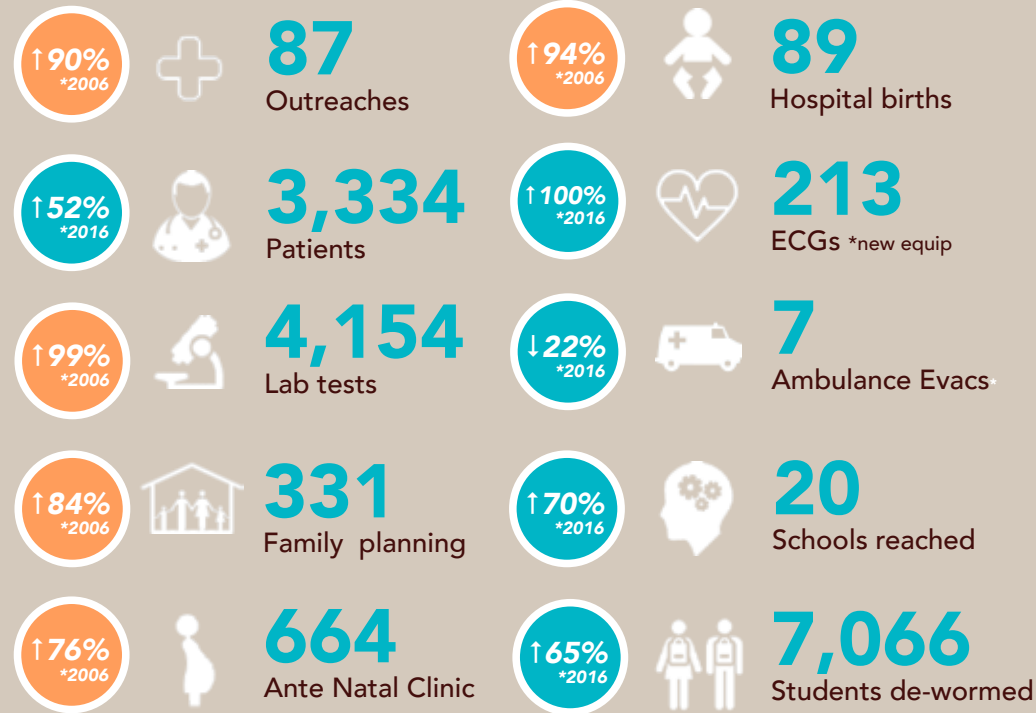
“The Chyulu Hills REDD+ Project represents a model partnership between government, local communities, and the private NGO sector to build a much needed sustainable funding model for conservation.”

- JUDI WAKHUNGU (Cabinet Secretary for Ministry of Environment, Water and Natural Resources of Kenya)

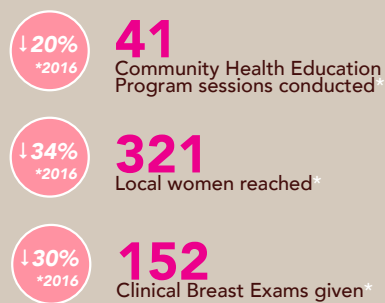
HEALTH PROGRAM

11 YEAR ANNIVERSARY

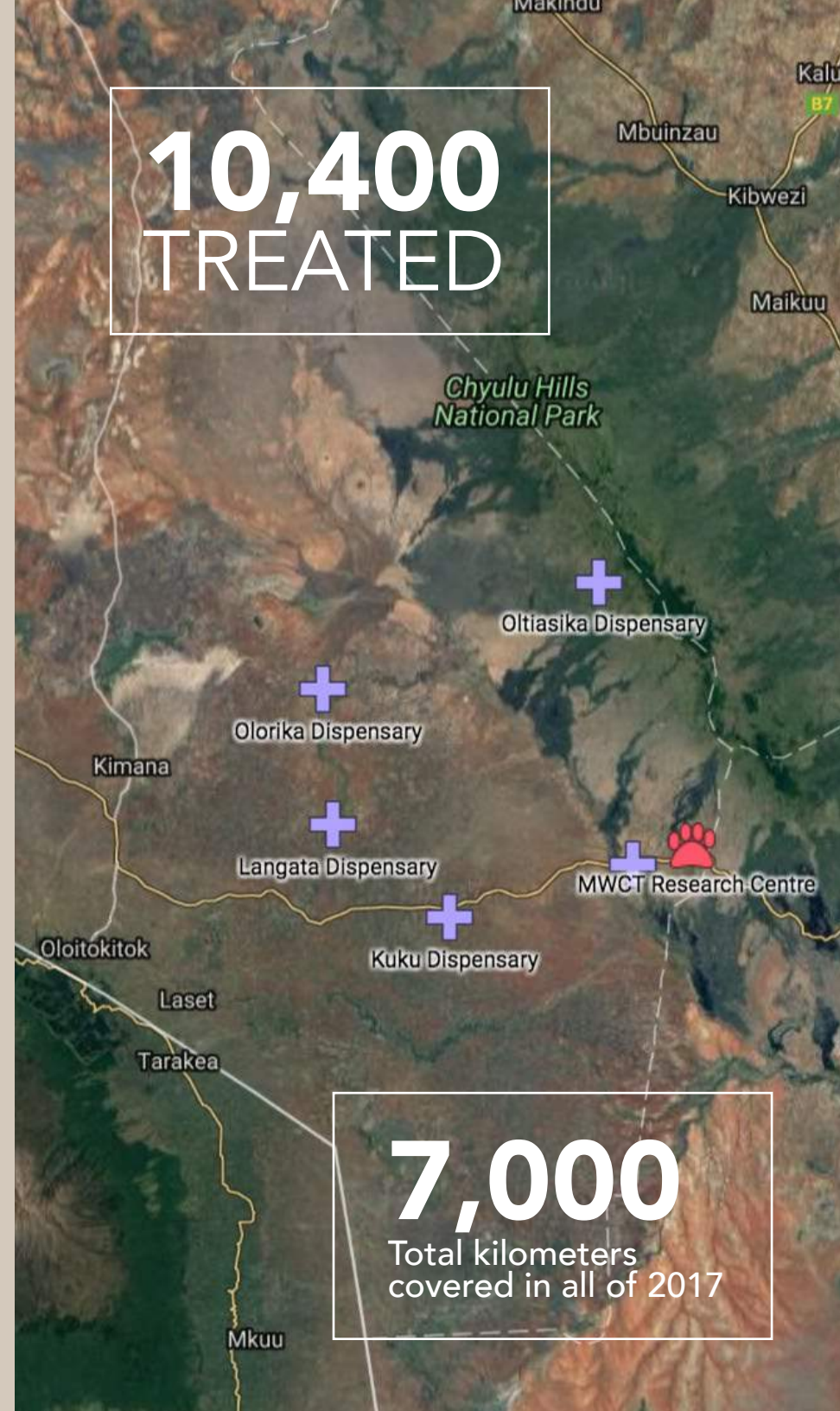
To ensure that the community benefits from our Health Program continue in perpetuity, MWCT employs health staff, runs and supports several dispensaries and supplies medical equipment and essential drugs to the community.



Through the Susan G Komen Foundation grant we were able to promote breast cancer awareness in the Kuku community.



*there were slight reductions in numbers due to mobility and access difficulties, but overall the health department reached most of their targets for 2017



"2017 was fulfilling for us and we look forward to working together with our partners towards delivery of health services for the Kuku community in the future..."

A big thank you to our supporters, partners, the county government of Kajiado and the Susan G Komen Foundation for enabling us to continue doing our work."

Dr. Edward Omete
MWCT Doctor

LIVELIHOODS PROGRAM

Self-Sustaining Employment Among Maasai Women

MWCT supports the Maasai to explore other income generating activities. While widespread illiteracy poses a challenge, MWCT pursues creative ways to build financial understanding and grow the capacity of the Maasai – especially women – to run profitable enterprises.

MOILO GRASS SEED BANK

JUSTDIGGIT Sponsor

10
Local Women in Charge

10 hectares
Project area

1.5 high electric fence
Protection

745kgs
Grass Seeds Harvested

640kgs
Grass Seeds Sold

1200 Kshs (12 USD)
Per Kgs Grass Seed sold

70 bales
Hay Harvested

30 bales
Hay Sold

300 Kshs (3 USD)
Per Hay bale sold

LUCI SOLAR LIGHTS

A NEW COURSE/MPOWERD Sponsor

The goal was to not only reverse the negative health effects from the kerosene lanterns traditionally used, but also to provide a platform for the women to establish an alternative income generating enterprise for themselves. By saving money from no longer purchasing kerosene, the women were able to contribute regularly to an enterprise that would benefit them in a sustainable way.

119
Luci Lights Distributed

CHRISTMAS ORNAMENTS

A NEW COURSE Sponsor

247
Ornaments sold

FGM (Female Genital Mutilation Outreach)

A NEW COURSE Sponsor

26
Trained Anti-FGM Influencers

620
Young Maasai Girls reached

EDUCATION PROGRAM

Investing in the Next Generation

 **24**
Schools supported


 **57**
Teachers employed

 **13**
Support staff

 **157**
Bursaries

 **60**
Scholarships

19
Active
3
New this year

 **8,483**
Students enrolled
52% 48%
Boys Girls

KEY NOTES

STAFFING

Current Ratio:
1 Teacher - 50 Pupils

Volunteer Student:
2nd term, English,
Itlilal Primary

ENROLLMENT

Highest enrollment:
Lower classes, Itlilal
Primary School

SCHOOL SUPPLIES

Itlilal Primary School:
1075 pupils received textbooks,
exercise books, pencils & erasers
Solar power & Tapped water
E-Learned Tablets (Ministry of Education)

All Schools:

MWCT purchased branded pens
& notebooks for every student in
Kuku Group Ranch

SECONDARY EDUCATION

Trust supports 2 Secondary schools
Itlial Mixed + Enkii Boys

Trust Scholarship Program:

2 pupils sat for KCSE (Kenya
Certificate of Secondary Education)
Exam and qualified to join Kenyan
Public Universities

EXAMINATIONS

Kuku Group Ranch Candidates:
506 pupils from 17 schools
sat for KCPE Exams

Most Improved:
Olorika Primary School improved
score by 21% since 2016

Top Marks:
Itlilal Primary School

Best Performed Subjects:
1st - Science
2nd - Social Studies
3rd - Math

Top Girl:
Hope Namelok Kispan
(386/500 score)
Itlilal Kanzi Primary School

Top Boy:
David Sarinke Loolosho
(391/500 score)
Itlilal Kanzi Primary School

EDUCATION DAY

Leaders, Parents, Teachers + Pupils
Celebrate exam performances

EXTRA-CURRICULAR

1st & 2nd Term Athletics (Soccer)
Maasai Elder also teaches cultural classes

PARTNERSHIPS

Ministry of Education
Loitoktok Subcounty Education Office
Government Education Office
Naisula School
University of Arizona

CHALLENGES

Losing Part-Time teachers to Government Services. Teacher's Service Commission absorbed 4 of our teachers in 2017. Our desire is to continue to look for funds to harmonize teacher salaries to Government packages and build more classrooms and hire more teachers to improve education standards.

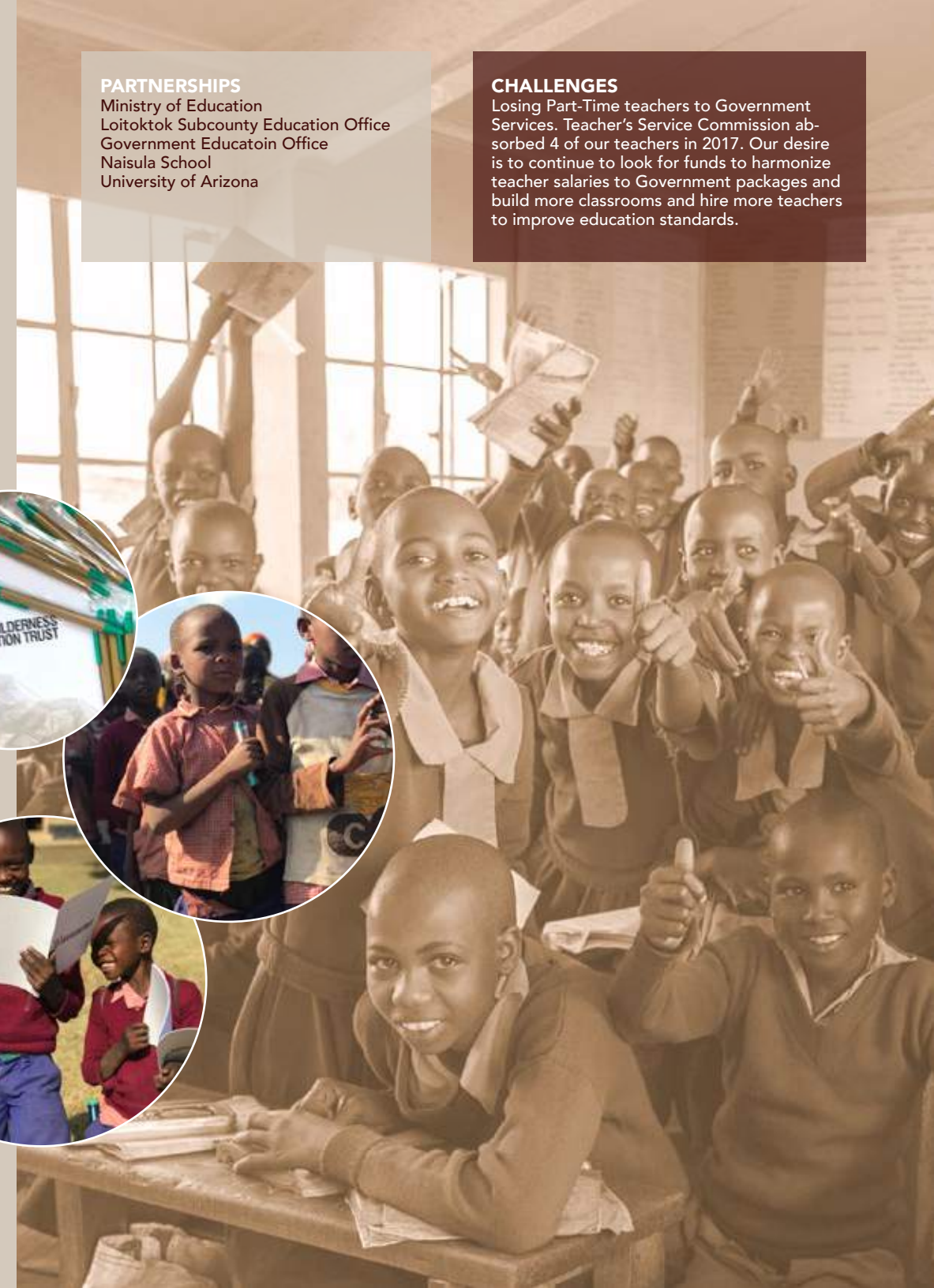


STORY SPOTLIGHT
WOMEN SUPPORTING WOMEN

MOILO GRASS SEED BANK WOMEN
Made a **50,000 KSHS DONATION**
towards our first Maasai Woman Ranger
who ran in the NYC Marathon from
their earnings!



Photos:
Moilo Grass Seed Bank Women &
Luci Lights with Maasai family



MWCT FINANCIALS

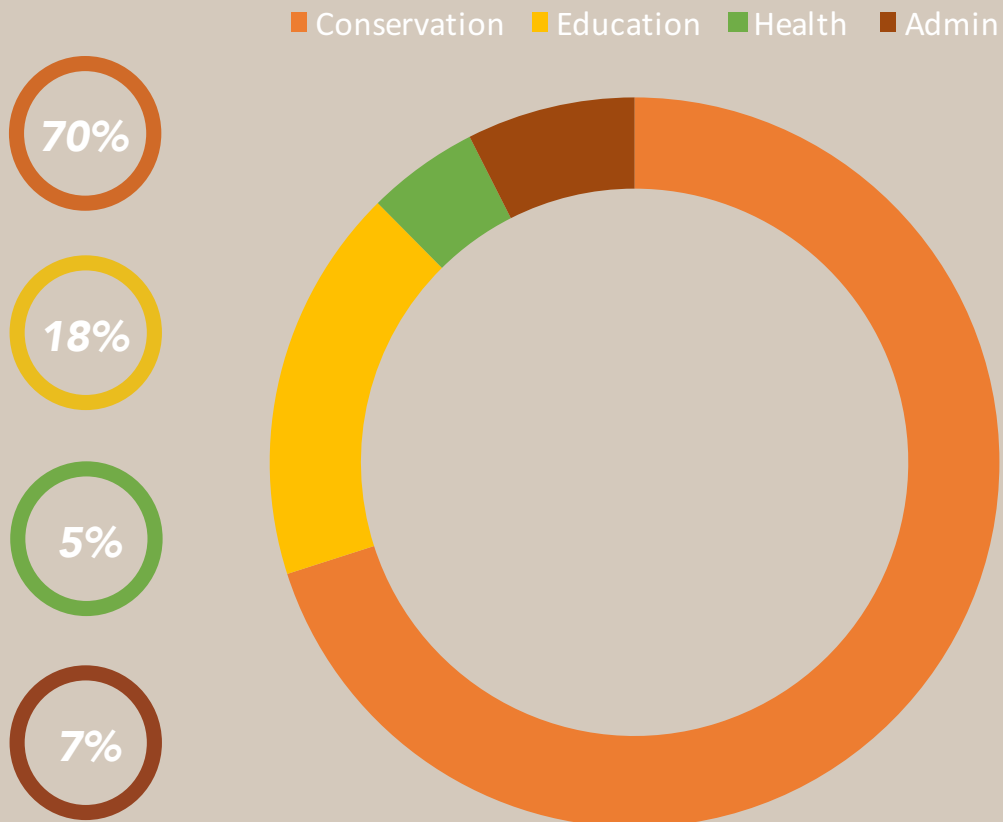
PROGRAMS & ACTIVITIES

RUNWILD NYC MARATHON

The New York City Marathon is our biggest fundraising campaign of the entire year. In 2017, we generated **\$143,636** in donations. The funds raised by the marathon help support all of the programs in varying capacities, where areas need it the most.

PROGRAM EXPENSES

CONSERVATION	\$1,694,565.00
EDUCATION	\$423,931.00
HEALTH	\$120,025.00
ADMIN	\$180,565.00
TOTAL	\$2,419,086.00



PARTNERS & SUPPORTERS

THANK YOU - ASANTE SANA



We are grateful for the continuous support that we receive from our donors and partnered organizations that aid us in achieving the goals and work expressed above. Some of our esteemed partners are shown above.

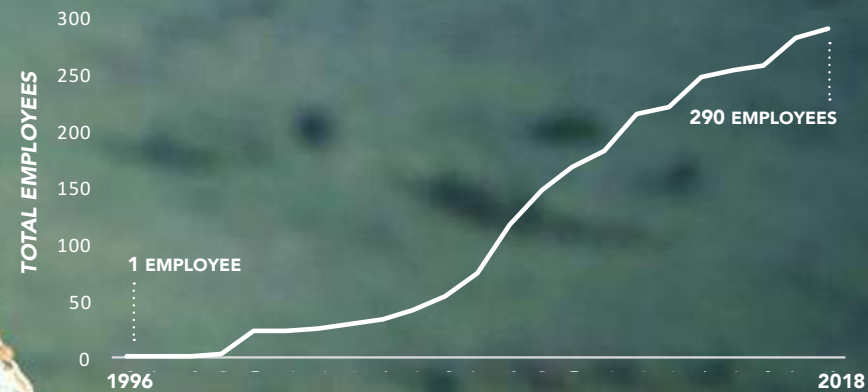


MWCT HISTORY

1996 - 2018



1996 START OF CAMPI YA KANZI CONSTRUCTION	1997 SOFT OPENING OF CAMPI YA KANZI DECEMBER	1998 CAMPI YA KANZI SUPPORTS TWO RANGERS	1999 EDWARD NORTON VISITS CAMPI YA KANZI	2000 MAASAI WILDERNESS CONSERVATION TRUST FOUNDED	2001 FIRST MWCT SCHOLARSHIP GRANTED
2002 MWCT OFFICIAL REGISTRATION APPROVED	2003 MWCT FULLY SUPPORTED BY LUCA & ANTONELLA	2004 MWCT FULLY SUPPORTED BY LUCA & ANTONELLA	2005 MWCT FULLY SUPPORTED BY LUCA & ANTONELLA	2006 OFFICIAL START OF SUPPORT FROM EDWARD NORTON	2007 EDWARD NORTON BECOMES MWCF PRESIDENT
2008 CARTIER 'LOVE' CAMPAIGN & WILDLIFE PAYS ESTABLISHED	2009 NEW YORK CITY MARATHON WITH EDWARD NORTON	2010 CONSERVANCIES OFFICIALLY ESTABLISHED	2011 CHYULU HILLS REDD+CARBON PROJECT INCEPTION	2012 UNEP EQUATOR PRIZE, UNDP CHAMPION OF THE EARTH AWARDED	
2013 SAMSON PARASHINA OFFICIAL CHARIMAN OF THE BOARD	2014 INCREASE IN RANGERS TO MITIGATE HUMAN WILDLIFE CONFLICT	2015 MWCT STUDIES FOR WATER PAYMENT FOR ECOSYSTEM SERVICE	2016 STUDIES FOR SOLAR PAYMENT FOR ECOSYSTEM SERVICE	2017 MWCT SECURES GEF FUNDS FOR PROGRAMS	
2018 DISCUSSION FOR LAND-USE & GRAZING MANAGEMENT PLANS					



WORKING WITH THE COMMUNITY FOR THE PROTECTION AND PRESERVATION OF CULTURAL HERITAGE, THRIVING WILDLIFE AND A VITAL ECOSYSTEM.

PASSIONATELY WORKING SINCE 1996

MAASAIWILDERNESS.ORG