

CHYULU HILLS

REDD+ CARBON PROJECT

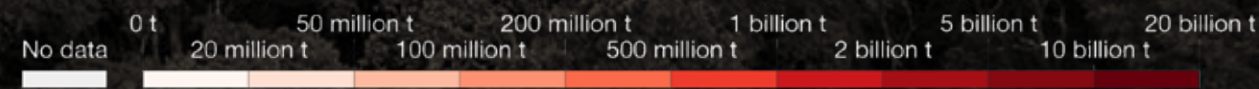
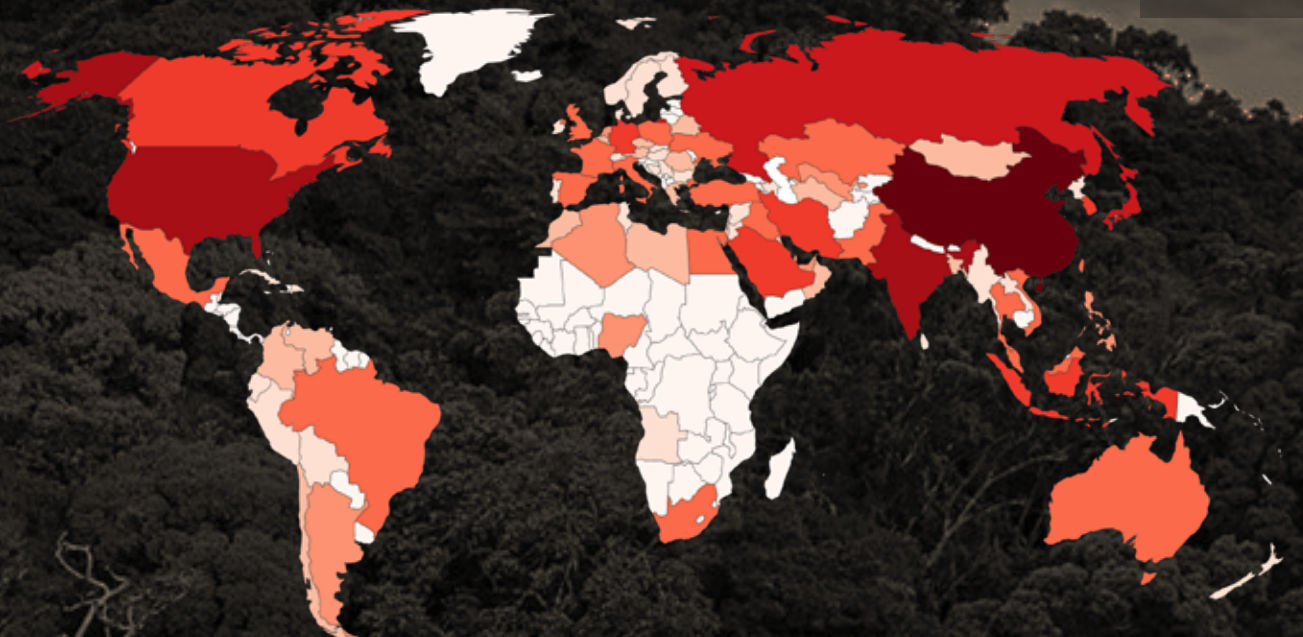
*HIGHEST QUALITY CARBON OFFSETS

*GOLD LEVEL COMMUNITY AND BIODIVERSITY BENEFITS

2022 Deck created by
CHRP Project Office



The total number of global CO2 emissions is 400% more than it was in 1960. From 9 to 36 billion metric tonnes. & currently rising!



CURRENT GLOBAL CO2 EMISSIONS
Source: Global Carbon Project



The average American's carbon footprint is 5200% more than the average Kenyan's carbon footprint.



Forest destruction accounts for 20% of all the greenhouse gas emissions that cause climate change – more than all the cars, planes, and trains put together!

WHAT IS REDD+ HOW IT WORKS

The main drivers of forest destruction are economics and poverty. REDD+ is a mechanism that has been developed through the UN Framework Convention on Climate Change (UNFCCC) to provide economic incentives to protect forest rather than destroy it.

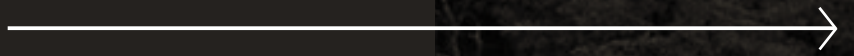
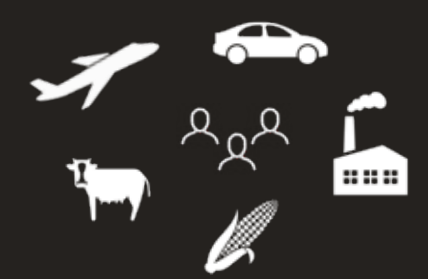
By protecting forests, greenhouse gas emissions are avoided. The international carbon markets recognise that carbon emissions result in real costs and risks to the planet as a result of the damage caused by climate change – droughts, extreme weather, sea level rise, loss of glaciers, ocean acidification, etc.

Payments to REDD+ projects enable individuals, companies and institutions to reduce their net emissions and receive "carbon credits" that offset their carbon footprint.

Contributing to our REDD+ project also delivers a whole range of additional benefits that include:

- + protecting watersheds
- + conserving biodiversity
- + providing social services and economic opportunities that reduce poverty in developing countries, such as Kenya.

CO2 emissions



Trees remove CO2 From the atmosphere



Preserve flora & fauna
Help local communities
Protect watersheds
Prevent climate change



Purchase carbon credit
/ offset your footprint!



OUR TIMELINE

OUR BUYERS



CHYULU HILLS, SOUTHERN KENYA
CRITICAL CORRIDOR

The Chyulu Hills sit close to Kenya’s southern border with Tanzania nestled in front of Mount Kilimanjaro, which towers over this iconic African landscape. The hills themselves, like the great mountain, are the result of the violent volcanic history of this region.

They gently rise nearly 4000 ft above the surrounding dry plains and savannah, just high enough to capture the clouds and provide conditions for the growth of a lush tropical montane cloud forest along its ridge tops. The landscape (nearly 4000 sq. km) forms a critical “bridge”, linking together two of Kenya’s most important wildlife areas, the greater Tsavo Ecosystem and Amboseli Ecosystem.

This area is home to Kenya’s largest surviving population of elephants and one of its foremost large-scale wildlife and wilderness areas. The Chyulu Hills REDD+ Project aims to protect the Chyulu Hills landscape, its forests, woodlands, savannahs, wetlands and springs, and its wild populations of Africa’s best known animals - lions, cheetahs, wild dogs, rhinos, elephants, and various antelopes.

WHY CHYULU CREDITS?

- Funding model maximises support for conservation and communities
- Validated and verified under the most rigorous international standards:
 - The Verified Carbon Standard (VCS)*
 - The Climate Community and Biodiversity Standards (CCBS).*
- Impacting 100,000 indigenous people
- Preserving a critical watershed, feeding water to Mombasa (2nd largest city in Kenya)
- Preserving 1,000,000 acres of landscape
- Protecting iconic, endangered wildlife
- Conserving 2 national parks
- 2,000,000 credits verified from 2013-2016
- 3,000,000 credits being verified from 2017-2020

9 STAKEHOLDERS INCLUDE
4 INDIGENOUS COMMUNITY GROUPS

Kuku A Group Ranch (KAGR)
Kuku Group Ranch (KGR)
Mbirikani Group Ranch (MGR)
Rombo Group Ranch (RGR)

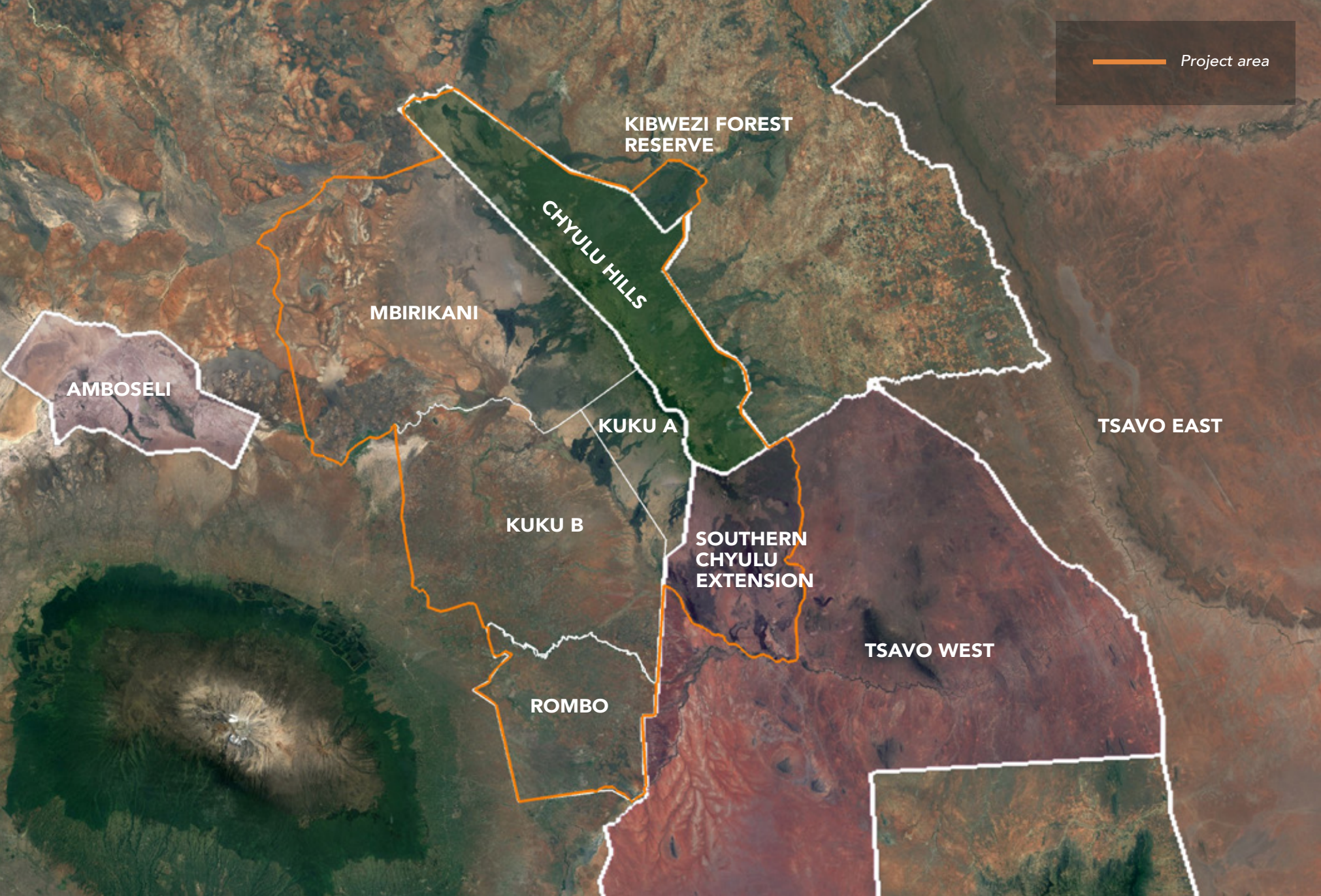
2 GOVERNMENT AGENCIES
Kenya Wildlife Service (KWS)
Kenya Forest Service (KFS)

3 LEADING KENYAN NGOS
Maasai Wilderness Conservation Trust (MWCT)
Big Life Foundation (BLF)
Sheldrick Wildlife Trust (SWT)



750,000 verified
credits per year

Equivalent to
\$15 M
per year **at \$20**
per credit



**Currently,
2,000,000 carbon credits sold.**

TANGIBLE IMPACTS

400+	Community Rangers supported
30+	Schools supported
900+	Beehives (with equipment, training)
23,000,000+	Kshs for bursaries and scholarships disbursed
200+	Girls recieved sustainable menstrual kits
200+	New desks procured for RGR
10+	Teachers supported
40+	Community outreach meetings
4	New 4X4 vehicles (KWS, KFS, and Project Office)
1	Solar power system

- Emergency Fire Managemant equipment
 - Water backpacks
 - Fire beaters
 - 300 rangers trained in fire management
 - Helicopter hire for aerial fire management
 - Fire pumps
 - Water bowsers
 - Radios
 - 240+ km fire break (stopped fires from spreading)

- Refurbishment (Fencing) and Expansion of Thange Tree Nursery (KFS) Kibwezi
- Rehabilitating degraded Wetland and riparian area
- New Ranger station in RGR
- New public water tanks, water points and troughs
- New school latrines in KGR

...and more.



"The Chyulu Hills REDD+ Project represents a model partnership between government, local communities, and the private NGO sector to build much needed sustainable funding model for conservation."

- Judi Wakhungu
Former Cabinet Secretary for Ministry of Environment, Water and Natural Resources of Kenya

"This project creates two very significant opportunities, simultaneously: It paves the way for ecosystem-scale conservation efforts to finally grow beyond perpetual dependency on philanthropic grant funding and finally be underwritten sustainably and long-term by cutting edge market economic models. And in parallel, it offers not just responsible companies but also individuals a way to offset their carbon footprint with an unprecedented level of credibility and confidence."

- Edward Norton
United Nations Goodwill Ambassador for Biodiversity & President, Maasai Wilderness Conservation Fund

"Rarely does a project protect critical natural habitats and species, support vibrant human communities, and measurably address climate change, but the Chyulu Hills carbon offset program does all of that and more. I applaud all of the partners who made this great project possible and, if others follow in their footsteps throughout Africa and worldwide, there is real hope that we can address our shared climate change and sustainability challenges before it's too late."

- Terry Tamminen
CEO, Leonardo DiCaprio Foundation & Former Secretary of the California Environmental Protection Agency



Join UN Goodwill Ambassador for Biodiversity, Edward Norton and CHCT Chairman, UNEP Champion of the Earth, Samson Parashina and

Become Carbon Neutral Now!

CHYULU HILLS

REDD+ CARBON PROJECT